

GUARD RAIL REQUIRED ON LEFT

Sta 65+20 to 65+44	Length 24 ft.
69+61 - 69+85	24 "
71+00 - 73+48	248 "
75+78 - 76+02	24 "
77+02 - 80+00	298 "

ON RIGHT

Sta 65+14 to 65+38	Length 24 ft.
69+61 - 69+85	24 "
71+48 - 73+48	200 "
75+78 - 76+02	24 "

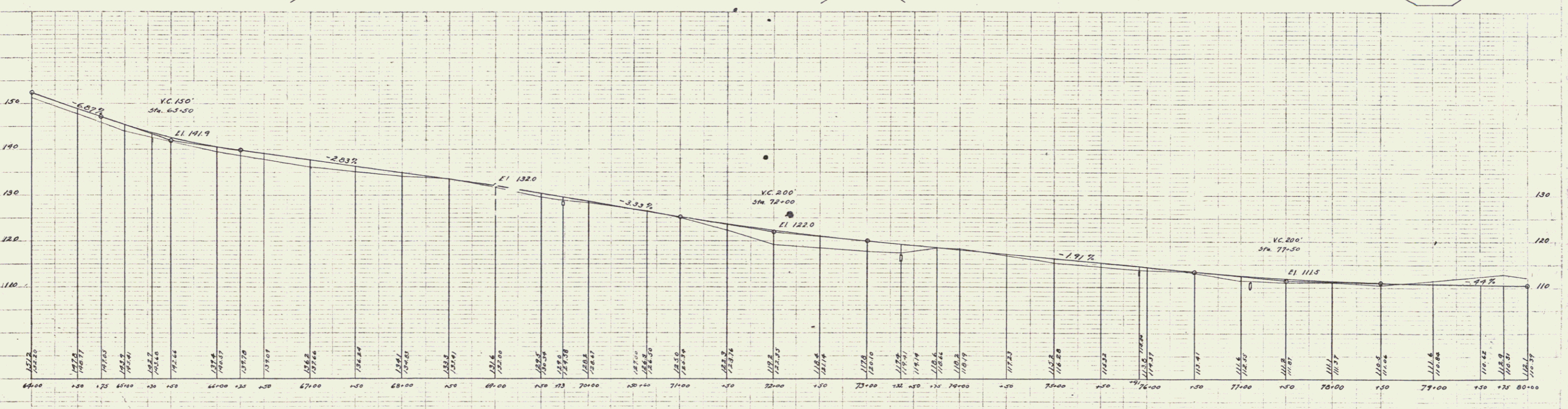
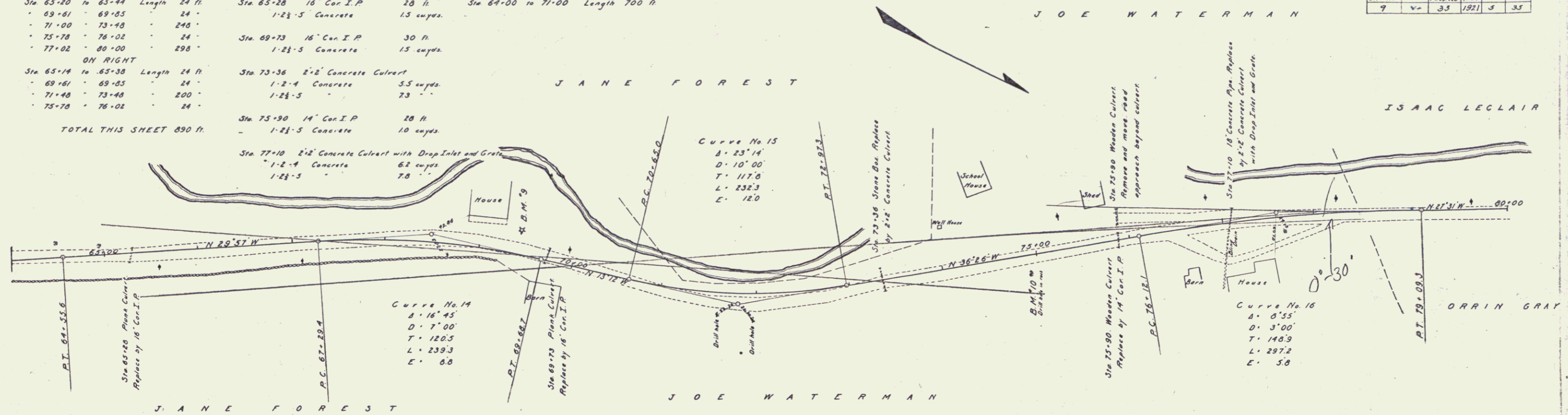
TOTAL THIS SHEET 890 ft.

NEW CULVERTS REQUIRED

Sta 65+28	16" Con. I.P.	28 ft.
	1-2'-5" Concrete	13 cuys.
Sta 69+73	16" Con. I.P.	30 ft.
	1-2'-5" Concrete	13 cuys.
Sta 73+36	2'-2" Concrete Culvert	
	1-2'-4" Concrete	5.5 cuys.
	1-2'-5" Concrete	7.3 "
Sta 75+30	14" Con. I.P.	28 ft.
	1-2'-5" Concrete	10 cuys.
Sta 77+10	2'-2" Concrete Culvert with Drop Inlet and Grate	
	1-2'-4" Concrete	6.2 cuys.
	1-2'-5" Concrete	7.0 "

SUB BASE REQUIRED
Sta 64+00 to 71+00 Length 700 ft.

PER PLAN	PER R/W	PER R/W	PER R/W	TOTAL
DIST. NO.	DATE	NO.	DATE	NO.
9	4	33	1921	35



B.M. 9 Spike in Jam Tree Left of Road Sta. 69+43. Elev. 130.84.
B.M. 10 Drill Hole in Rock Right of Road Sta. 74+73. Elev. 110.70.

PLAN
REVISED
DATE
BY
CHECKED
DATE
BY

Checked
by
Date