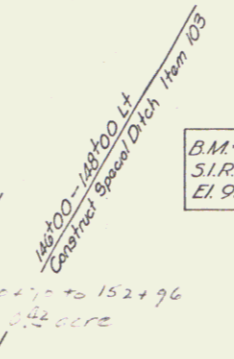
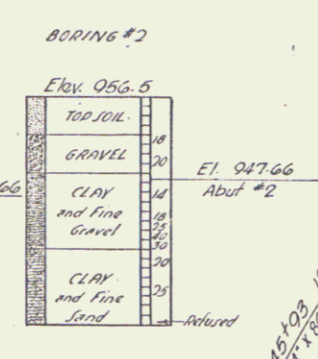
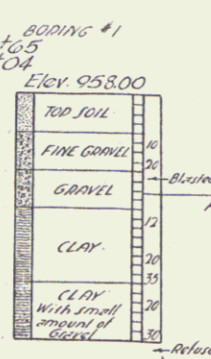


CONSTRUCT DRIVES  
 155+34 RT  
 156+00 RT

THREE CABLE GUARD RAIL  
 WITH STEEL POSTS  
 RT  
 140+00-140+10.5  
 140+16.5-140+64.5  
 140+65.5-142+41.5  
 140+89.5-142+33.5

REMOVAL AND DISPOSAL OF  
 PRESENT GUARD RAIL  
 RT  
 140+47-140+63  
 140+87-141+03  
 RT  
 140+33-140+65  
 140+80-141+04



BRIDGE DATA

Type	PRESENT	PROPOSED
Overall Span along R.R.	34.5'	25'
Road width face to face Curb	20.5'	40'
Clear Span along R.R.	20'	22.11'
Clearance Normal to Stream	80'	81.25'
Clearance to Low Br. Boat	53.0'	53.30'
Max. H.W. water Elev.	954.4	953.3
Normal High water Elev.	954.5+	954.8
Waterway To Low Br. Boat	80"	100"
Normal To Max. H.W. Elev.	43"	44"
Stream To Normal H.W. Elev.		35"
Stream Velocity	20/sec.	slight
Drift		NO
Scour		NO

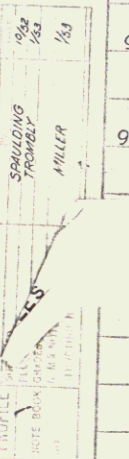
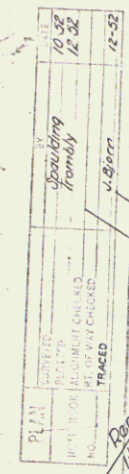
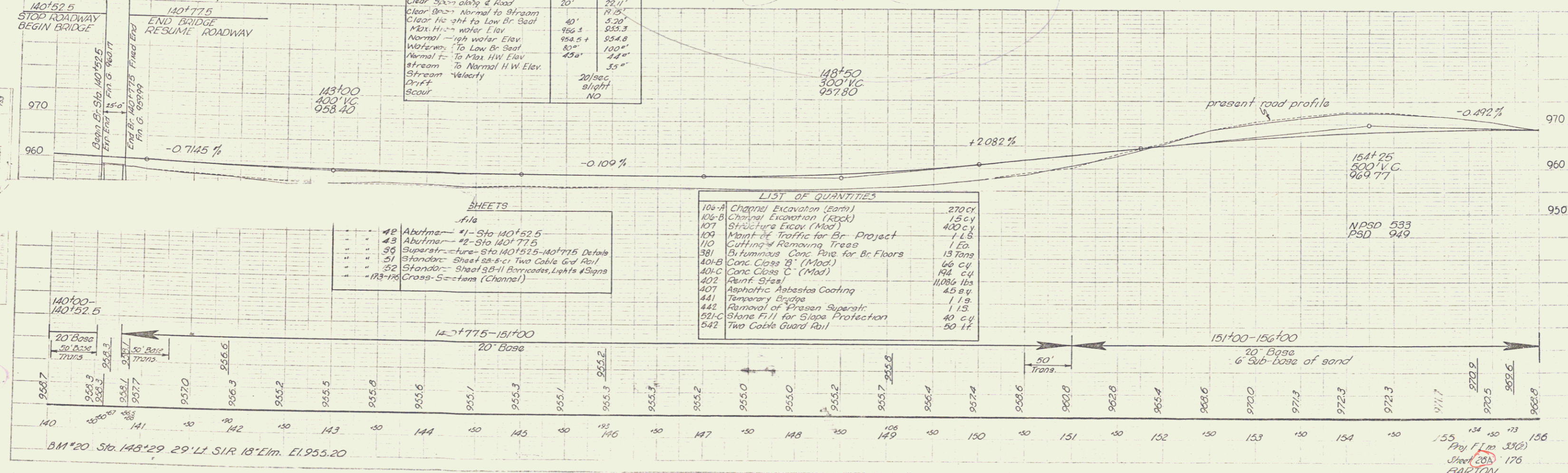
Voided

LIST OF QUANTITIES

106-A	Channel Excavation (Earth)	270 cy
106-B	Channel Excavation (Rock)	15 cy
107	Structure Excav (Mod.)	400 cy
109	Maint. of Traffic for Br. Project	1 LS
110	Cutting & Removing Trees	1 Ea.
381	Bituminous Conc. Pave for Br. Floors	13 Tons
401-B	Conc. Class B (Mod.)	66 cy
401-C	Conc. Class C (Mod.)	194 cy
402	Reinf. Steel	11,086 lbs
407	Asphaltic Asbestos Coating	45.8 sq
441	Temporary Bridge	1.19
442	Removal of Present Superstr.	1.13
521-C	Stone F.I.I. for Slope Protection	40 cy
542	Two Cable Guard Rail	90 ft.

SHEETS

42	Abutment #1 - Sto 140+52.5
43	Abutment #2 - Sto 140+77.5
39	Superstructure - Sto 140+52.5-140+77.5 Details
51	Standard - Sheet 28-B-C: Two Cable Gnd Rail
52	Standard - Sheet 32-B: Barricades, Lights & Signs
173-176	Cross-Section (Channel)



Proj. Engr. S. J. (S)  
 Sheet 20B of 176  
 BARTON

5