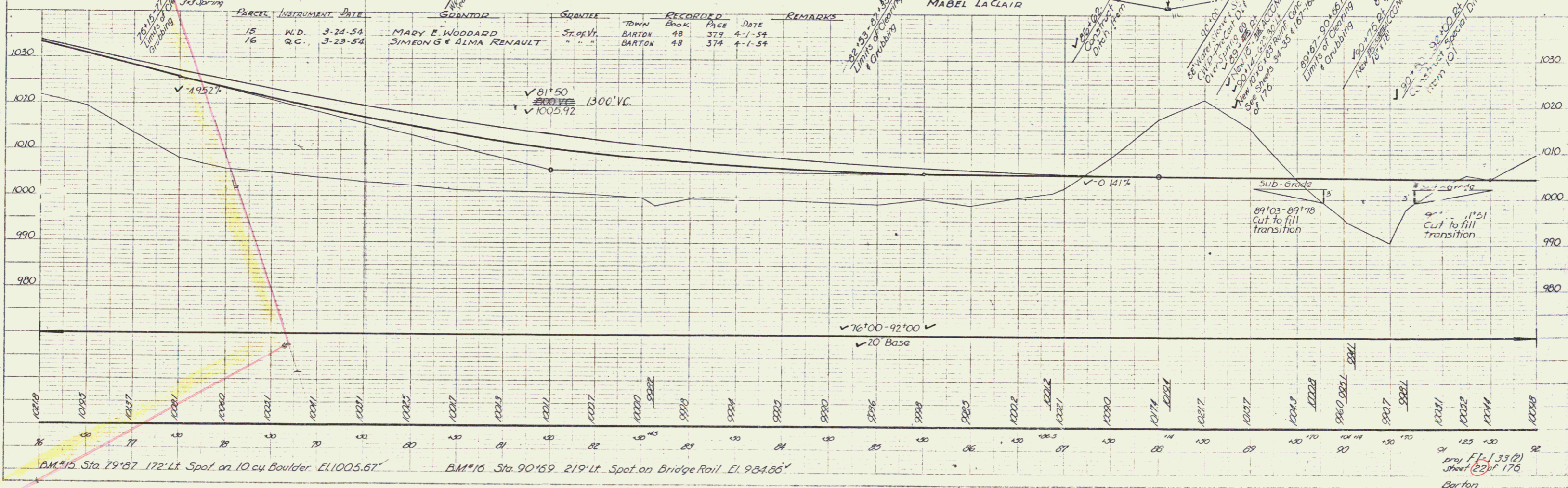
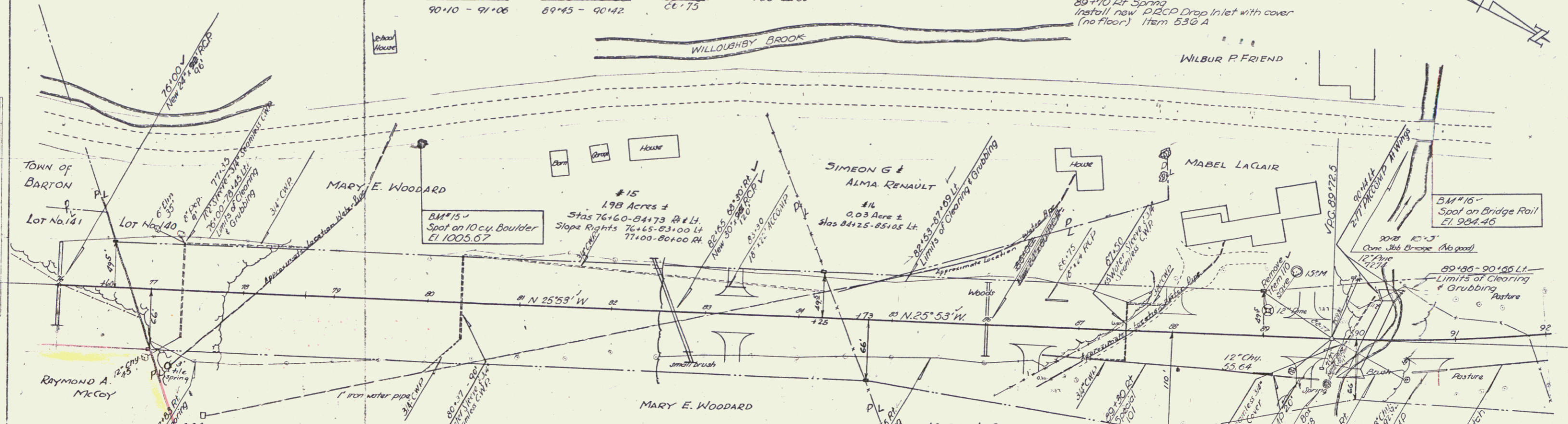


Lt Wood Guide Posts R/L
4 76+00 - 76+80

THREE CABLE GUARD
RAIL WITH STEEL POSTS
LT RT
76+00 - 80+68 76+00 - 76+32
89+74 - 91+34 89+56 - 90+68
90+10 - 91+06 89+45 - 90+42
60+75

CONSTRUCT DRIVES
LI RI
83+50 ✓ 86+58 75
83+50 ✓ 83+58 45
85+00 ✓ 89+48 25
86+75 ✓ 90+58 60

GOVT PARTICIPATION (ROW BID ITEMS)
73+15, 83+10, 87+50 & 89+70
Install sleeves for water pipes across
roadway, Item 103 A and relay or furnish
and lay water pipes
89+70 R/L Spring
Install new 22" Drop Inlet with cover
(no floor) Item 536 A



PLAN
REVISIONS
DATE
BY
CHECKED
DATE
BY

PLAN
REVISIONS
DATE
BY
CHECKED
DATE
BY

BM #16
Spot on Bridge Rail
El. 984.46

BM #15 Sta. 79+87 172' Lt. Spot on 10 cy Boulder El. 1005.67

BM #16 Sta. 90+59 219' Lt. Spot on Bridge Rail El. 984.86

proj. F-133(2)
sheet 22 of 176
Barton