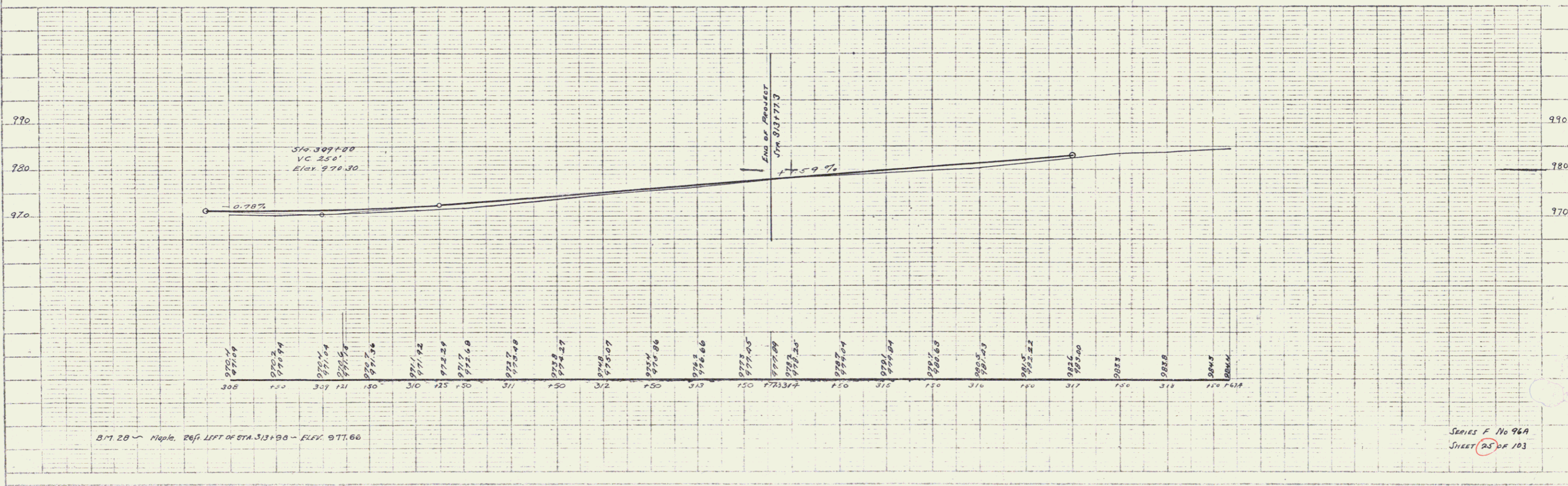
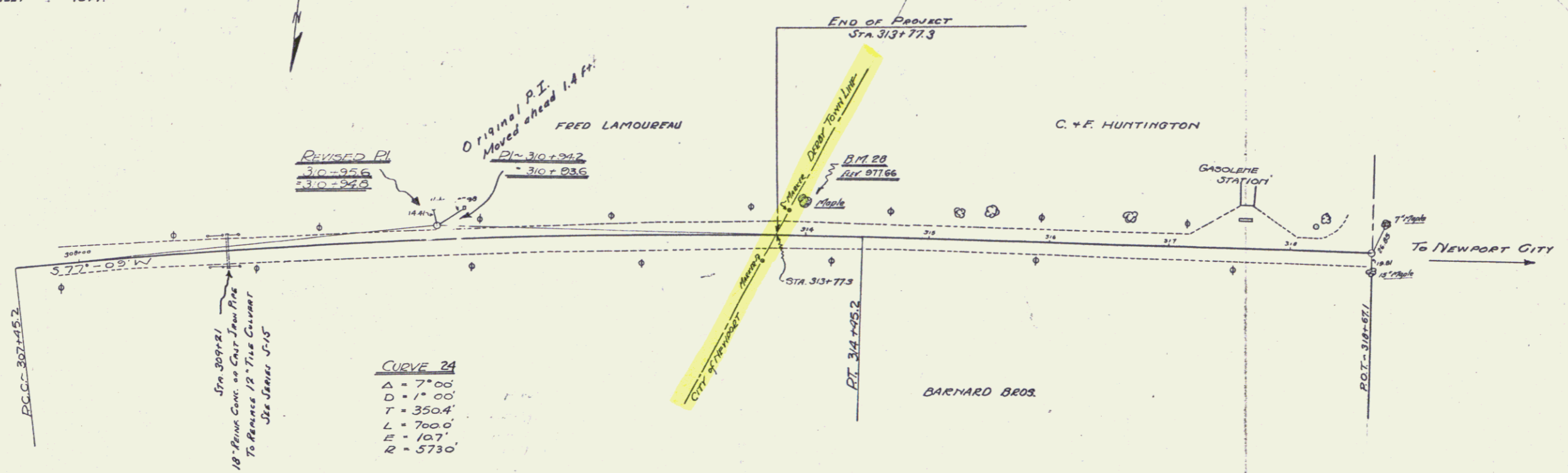


FED. ROAD DIST. NO.	STATE	FED. AID FISCAL YEAR	SHEET NO.	TOTAL SHEETS
1	VI.	96A	127	25

WOOD GUARD RAIL REQUIRED  
 RIGHT STA 309+09 TO 309+33 LENGTH 24 FT.  
 LEFT STA 309+09 TO 309+33 LENGTH 24 FT.  
 TOTAL THIS SHEET 48 FT.

NEW CULVERTS REQUIRED  
 STA 309+21 18" RING CONCRETE OR CAST IRON PIPE LENGTH 36 FT.  
 CLASS A(1-2-4) CONCRETE  
 REINFORCING STEEL 60 LB.



B.M. 20 - Nipple 20' LEFT OF STA 313+90 - ELEV 977.66

SERIES F No 96A  
 SHEET 25 OF 103