

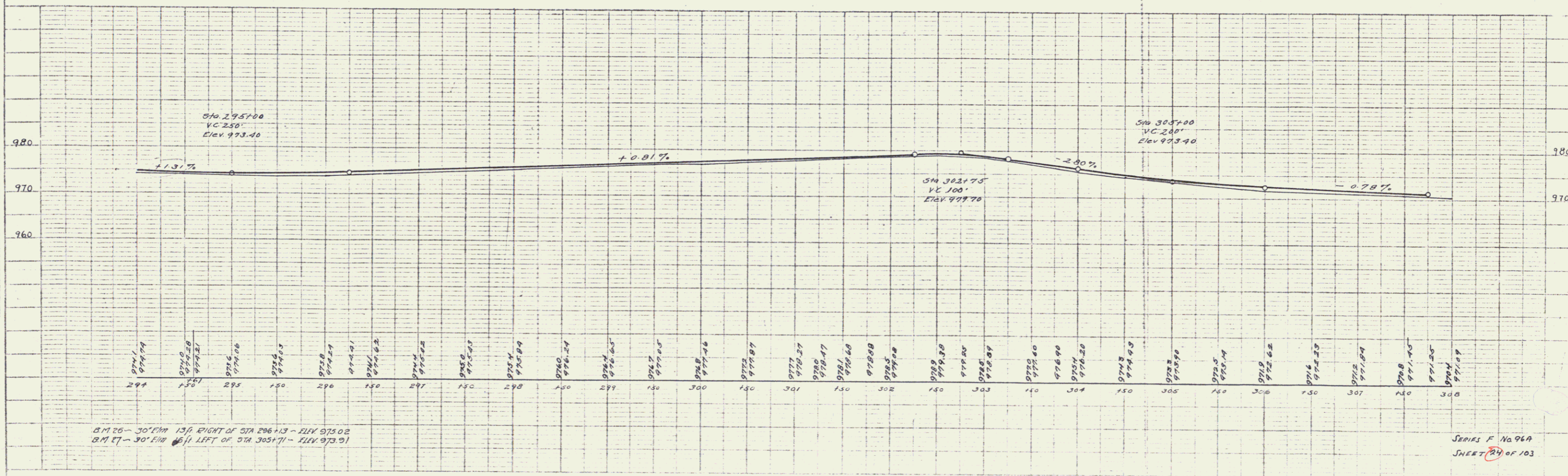
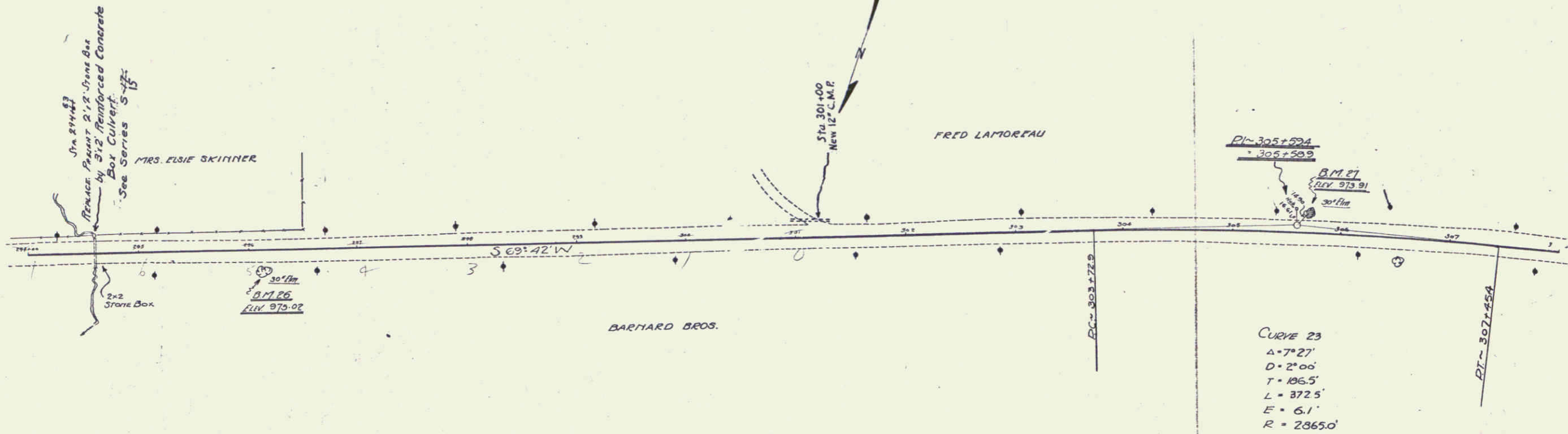
PLAN  
 DATE: 10/1/54  
 DRAWN BY: J. W. HARRIS  
 CHECKED BY: J. W. HARRIS  
 IN CHARGE OF FIELD: J. W. HARRIS  
 NO. 100

SHEET  
 TITLE: ROADWAY  
 PROJECT: STATE HIGHWAY 100  
 CONTRACT: 100-100-100  
 NO. 100

NEW CULVERT REQUIRED  
 STA. 294+68 3'x2' Reinforced Box Culvert  
 REINFORCING STEEL 730 Lbs.  
 CLASS A (1-2-4) CONCRETE 713 Cu Yds  
 10.8

Driveway Culverts  
 Sta. 301+00 L New 12" C.M.P. Length 20'

REG. NO.	STATE	FED. AID	FISCAL YEAR	SHEET NO.	TOTAL SHEETS
1	VI.	96A	1957	24	103



B.M. 26 - 30' E.M. 13' RIGHT OF STA 296+13 - ELEV 975.02  
 B.M. 27 - 30' E.M. 11' LEFT OF STA 305+71 - ELEV 973.91

SERIES F No. 96A  
 SHEET 24 OF 103