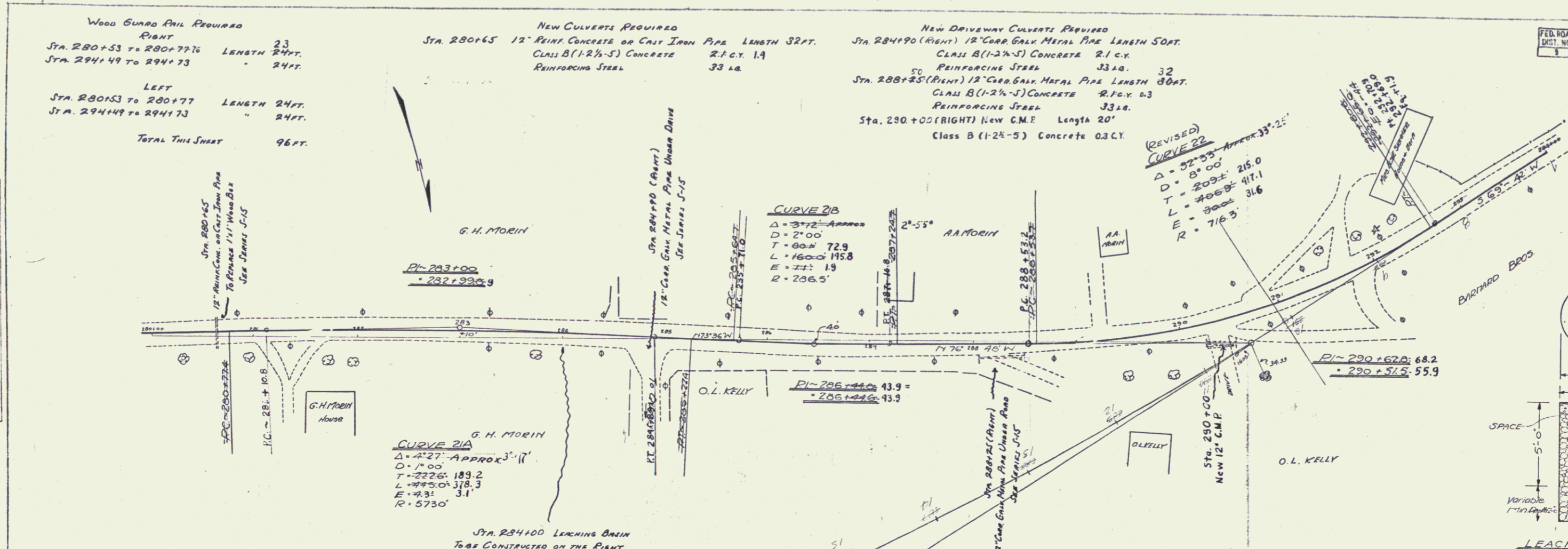


Wood Guard Rail Required
 RIGHT
 Sta. 280+53 to 280+77.6 LENGTH 24FT.
 Sta. 294+49 to 294+73 LENGTH 24FT.
 LEFT
 Sta. 280+53 to 280+77 LENGTH 24FT.
 Sta. 294+49 to 294+73 LENGTH 24FT.
 TOTAL THIS SHEET 96FT.

New Culverts Required
 Sta. 280+65 12" REIN. CONCRETE OR CAST IRON PIPE LENGTH 32FT.
 CLASS B (1-2 1/4") CONCRETE 21 CY. 1.4
 REINFORCING STEEL 33 LB.

New Driveway Culverts Required
 Sta. 284+90 (RIGHT) 18" CORR. GALV. METAL PIPE LENGTH 50FT.
 CLASS B (1-2 1/4") CONCRETE 21 CY.
 REINFORCING STEEL 33 LB.
 Sta. 288+25 (RIGHT) 12" CORR. GALV. METAL PIPE LENGTH 30FT.
 CLASS B (1-2 1/4") CONCRETE 21 CY. 0.3
 REINFORCING STEEL 33 LB.
 Sta. 290+00 (RIGHT) New C.M.F. Length 20'
 Class B (1-2 1/4") CONCRETE 0.3 CY.

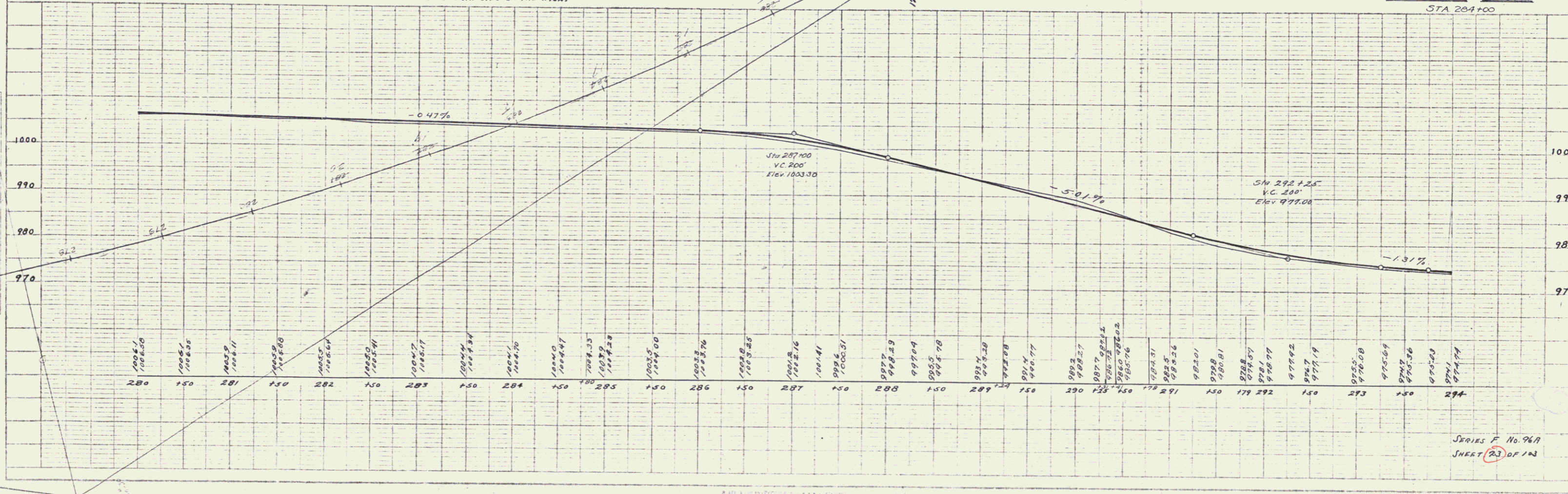
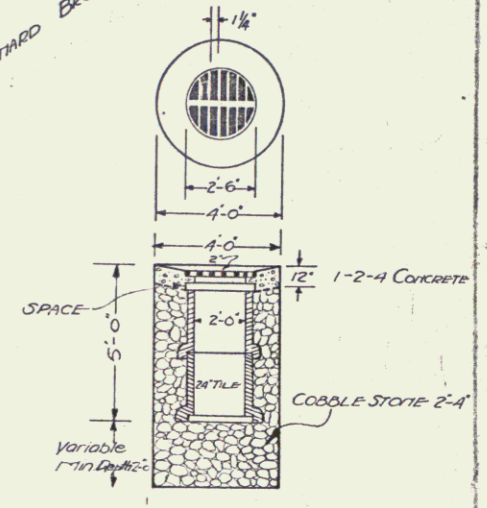
FED. ROAD DIST. NO.	STATE	FED. AID FISCAL YEAR	SHEET NO.	TOTAL SHEETS
11	TX	1967	23	103



G. H. MORIN
 CURVE 21A
 $\Delta = 42^\circ 27'$ APPROX. $3^\circ 11'$
 $D = 170.0'$
 $T = 222.6'$
 $L = 775.0'$
 $E = 4.3'$
 $R = 5730'$

CURVE 21B
 $\Delta = 37^\circ 12'$ APPROX. $3^\circ 21'$
 $D = 200'$
 $T = 60.4'$
 $L = 160.0'$
 $E = 1.9'$
 $R = 206.5'$

(REVISED)
 CURVE 22
 $\Delta = 52^\circ 35'$ APPROX. $3^\circ 21'$
 $D = 81.00'$
 $T = 20.9'$
 $L = 40.8'$
 $E = 3.6'$
 $R = 716.5'$



SERIES F No. 96A
 SHEET 23 OF 103