

WOOD GUARD RAIL REQUIRED
 RIGHT
 STA 262+83 TO 263+07 LENGTH 24 FT.
 LEFT OF
 STA 262+83 TO 263+07 LENGTH 24 FT.
 STA 254+50 -
 TOTAL THIS SHEET 45 FT.

CABLE GUARD RAIL REQUIRED
 RIGHT
 STA 252+87 TO 253+15 LENGTH 28 FT.
 STA 253+18 TO 254+42 LENGTH 22 FT.
 LEFT
 STA 253+00 TO 254+24 LENGTH 22 FT.
 STA 254+30 TO 256+10 LENGTH 18 FT.
 TOTAL THIS SHEET 44 FT.

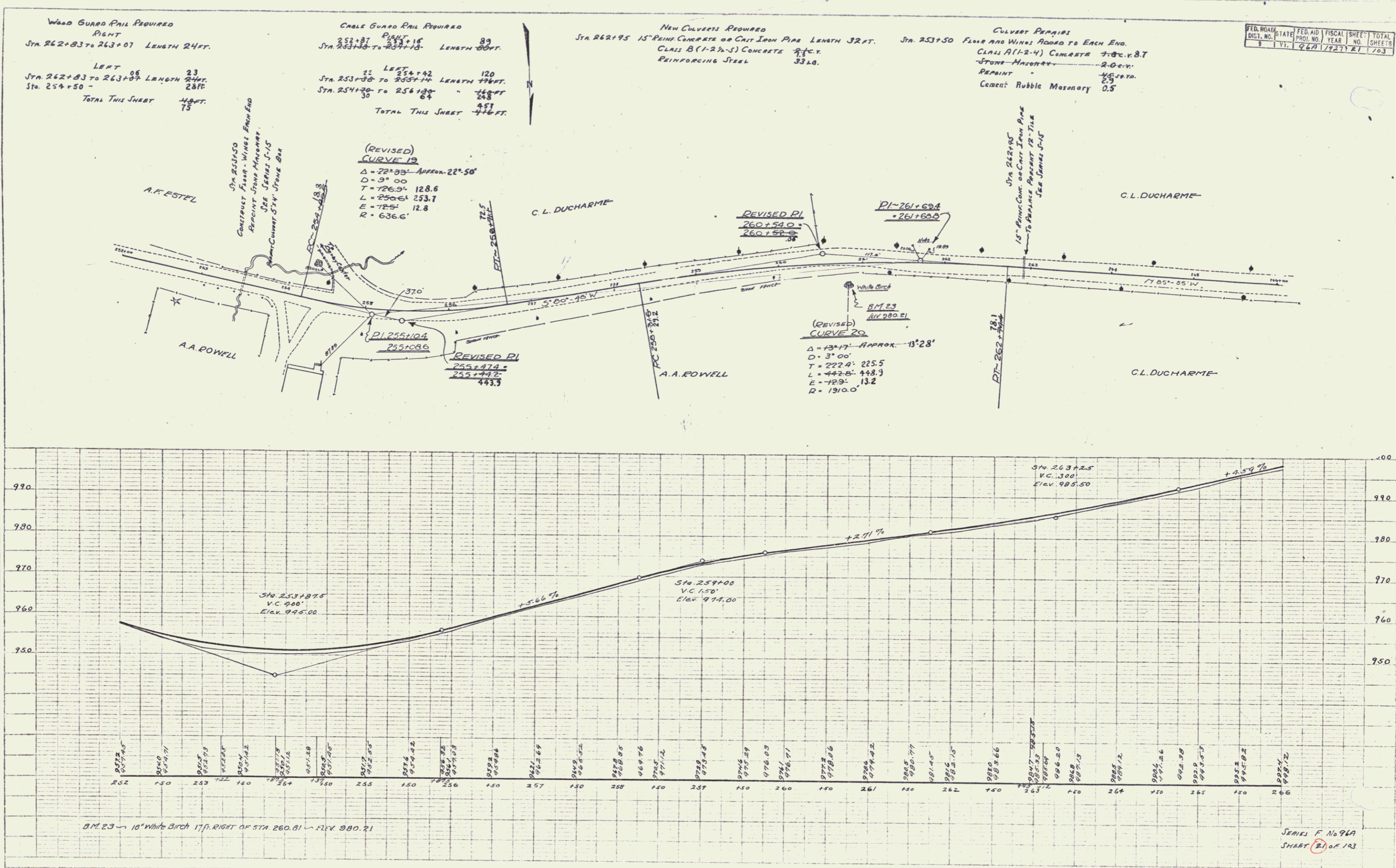
NEW CULVERTS REQUIRED
 STA 262+95 15" PAINT CONCRETE OR CAST IRON PIPE LENGTH 32 FT.
 CLASS B (1-2 1/2-S) CONCRETE REINFORCING STEEL 33 LB.

CULVERT REPAIRS
 STA 253+50 FLOOR AND WINDS ROAD TO EACH END.
 CLASS A (1-2-4) CONCRETE 7-8 C.Y. 8.7
 STONE MASONRY 2-0 C.Y.
 REPAINT 1/2 C.Y.
 CEMENT RUBBLE MASONRY 0.5

FED. ROAD DIST. NO.	STATE	FED. AID FISCAL YEAR	SHEET NO.	TOTAL SHEETS
8	VI.	262	21	123

PLAN	PROPOSED	EXISTING
NOTE BOOK	PLACEMENT SHEET	NO. 13

PROFILE	PROPOSED	EXISTING
NOTE BOOK	PLACEMENT SHEET	NO. 13



SERIES F No 96A
 SHEET 21 OF 123