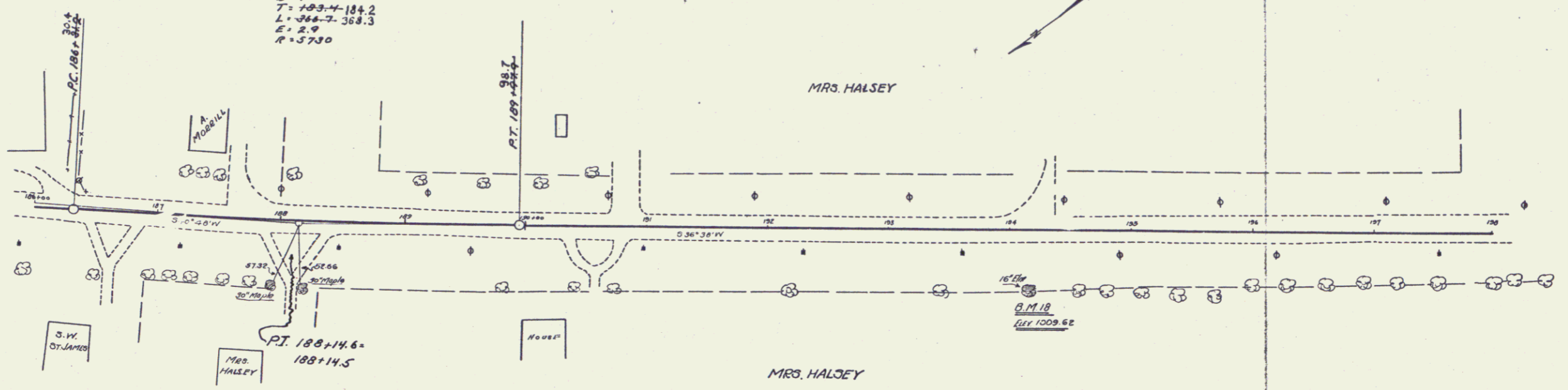
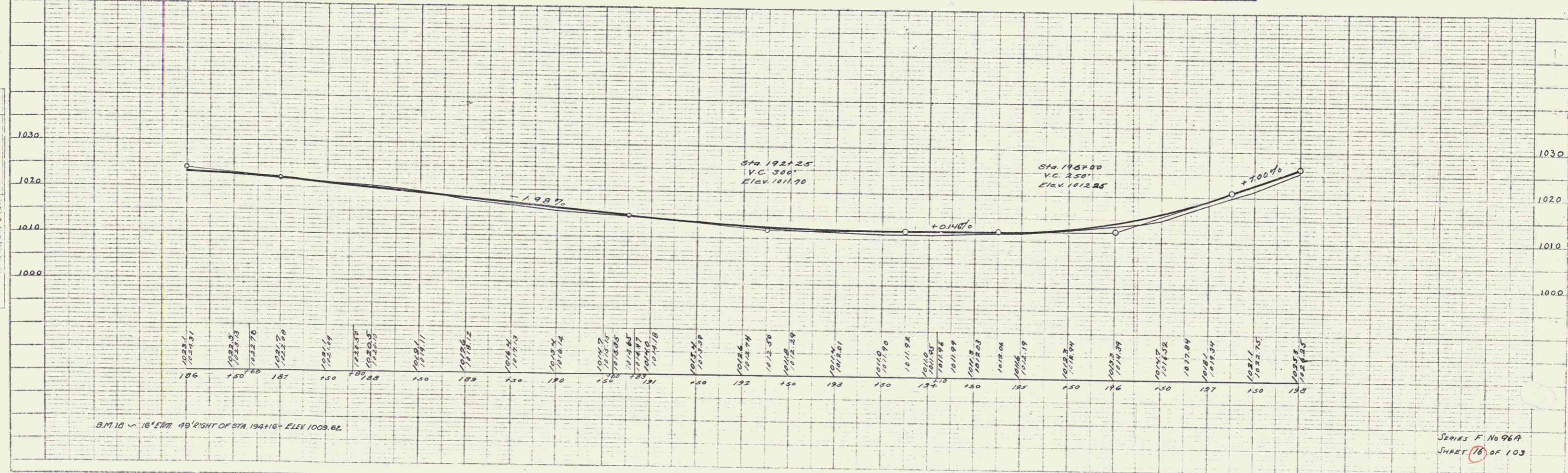


FED. ROAD DIST. NO.	STATE	FED. AID PROJ. NO.	FISCAL YEAR	SHEET NO.	TOTAL SHEETS
9	VT.	967	1927	16	103

Curve No. 13 (Revised)
 $\Delta = 34^\circ 13' 41''$
 $D = 14'$
 $T = 293.4 - 184.2$
 $L = 366.7 - 368.3$
 $E = 2.9$
 $R = 5790$



SLOPE 1 ON R/L TO ELIMINATE GUARD RAIL
 STA. 195+00 TO 197+00



SERIES F No 967
 SHEET 16 OF 103

16