

Wood Guard Rail Required
 Right
 STA 147138 TO 147162 LENGTH 24 FT.
 STA 154138 TO 154162 " 24 FT.
 LEFT
 STA 147138 TO 147162 LENGTH 24 FT.
 STA 154138 TO 154162 " 24 FT.
 Total This Street 96 FT.

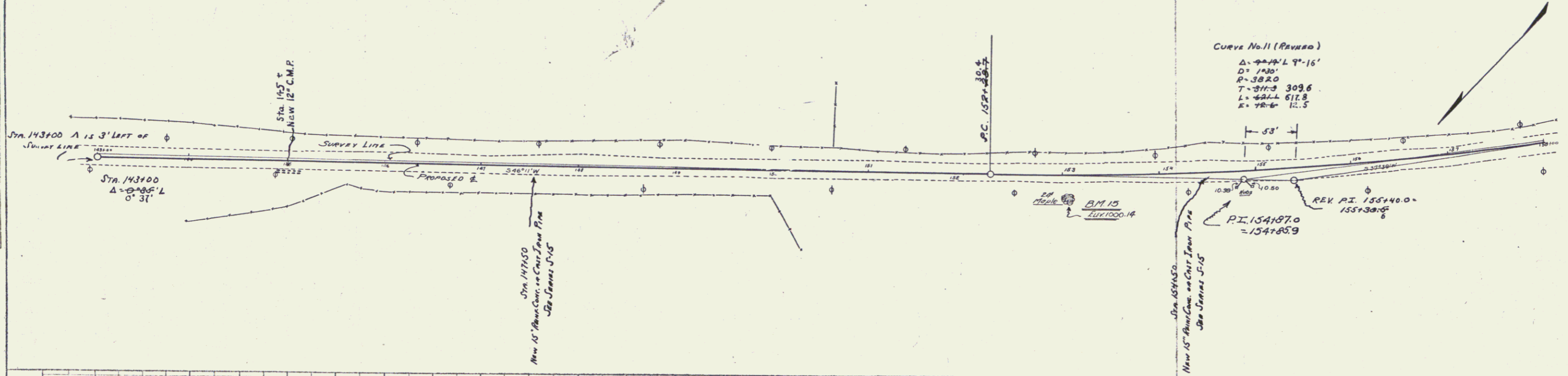
New Culverts Provided
 STA 147150 15" REINF. CONCRETE ON CAST IRON PIPE LENGTH 32 FT.
 CLASS B (1-27-5) CONCRETE 21 cu. yd.
 REINFORCING STEEL 332 lb.
 STA 154150 15" REINF. CONCRETE ON CAST IRON PIPE LENGTH 32 FT.
 CLASS B (1-27-5) CONCRETE 21 cu. yd.
 REINFORCING STEEL 332 lb.

Driveway Culverts
 Sta. 1455 R New 12" C.M.P. Length 20'
 Class B (1-24-5) Concrete 0.3 C.Y.

FED. ROAD DIST. NO.	STATE	FED. AID PROJ. NO.	FISCAL YEAR	SHEET NO.	TOTAL SHEETS
1	VI.	987	1971	73	103

PLAN

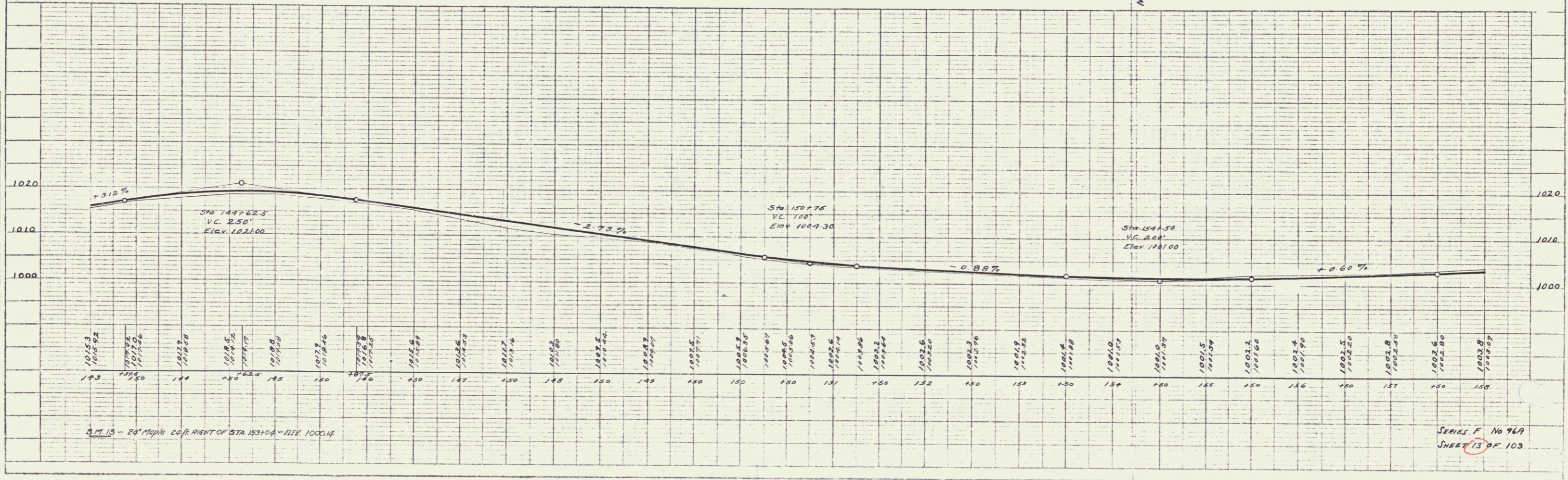
REVISION	DATE	BY	CHKD.



Curve No. 11 (Reverse)
 $\Delta = 72^\circ 41' 16''$
 $D = 1930'$
 $R = 3820'$
 $T = 3117.3$
 $L = 4242.8$
 $E = 78.6$
 10.5

PROFILE

REVISION	DATE	BY	CHKD.



B.M. 15 - 24" Maple 26 ft. RIGHT OF STA 15310.4 - Elev. 1001.14

SERIES F No 969
 SHEET 73 OF 103