

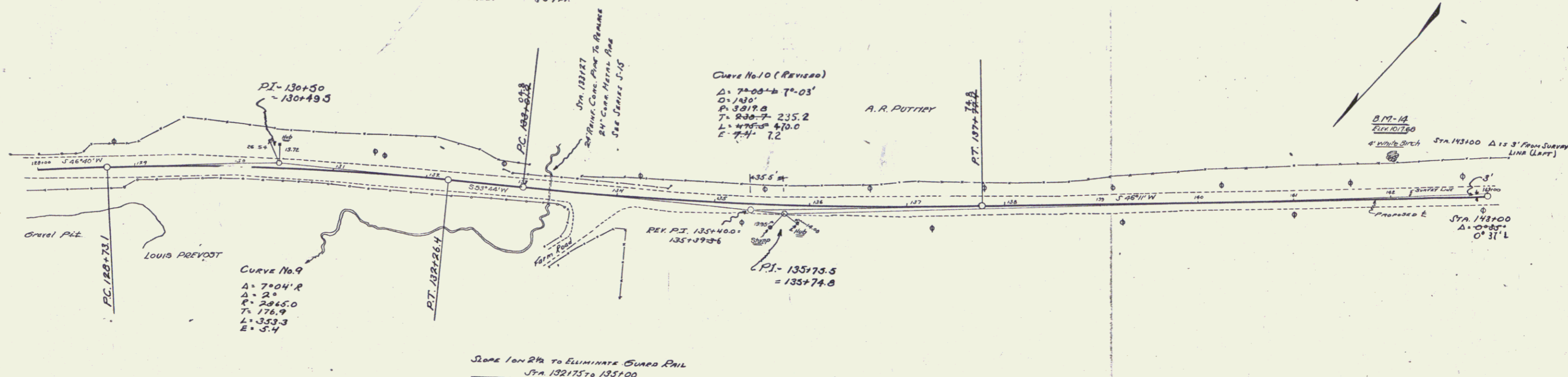
WOOD GUARD RAIL REQUIRED  
 05 LEFT 28 23  
 STA 133+15 TO 133+37 LENGTH 22 FT.  
 TOTAL THIS SHEET 23  
 24 FT.

CABLE GUARD RAIL REQUIRED  
 40 RIGHT 43 403  
 STA 129+07 TO 133+37 LENGTH 430 FT.  
 LEFT  
 STA 128+00 TO 128+02 LENGTH 2 FT.  
 TOTAL THIS SHEET 403  
 404 FT.

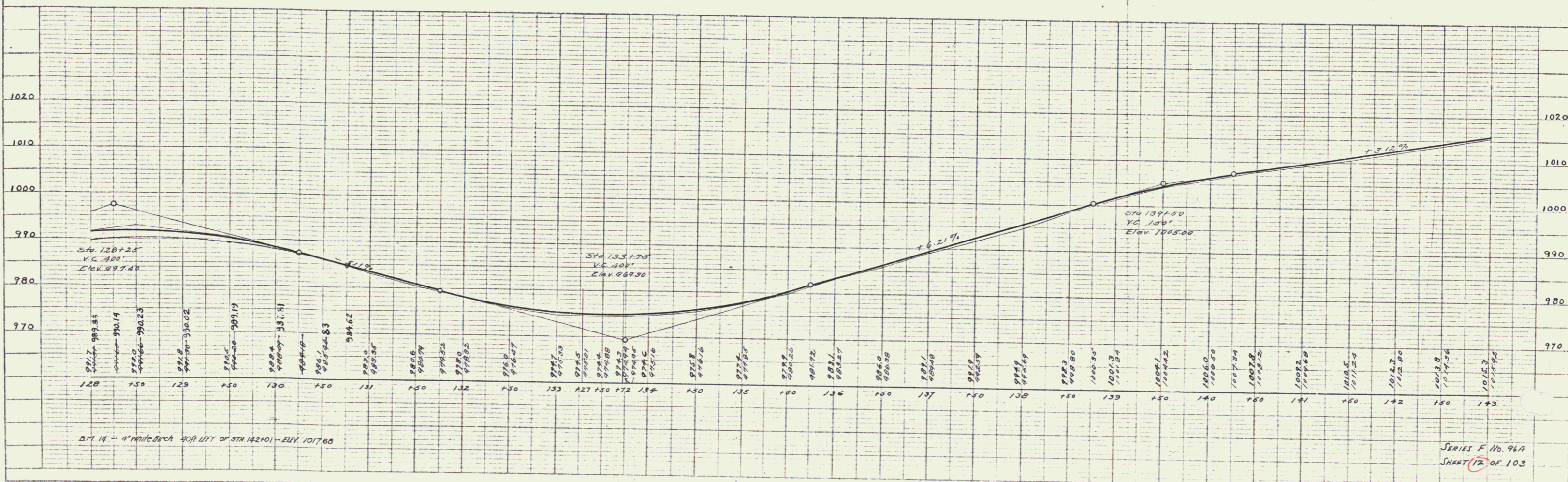
NEW CULVERTS REQUIRED  
 STA 133+27 24" REINFORCED CONCRETE PIPE CULVERT LENGTH 440 FT  
 CLASS A CONCRETE U-2-H 26 CY  
 REINFORCING STEEL 60 LB.

FED. ROAD DIST. NO.	STATE	FED. AID PROJ. NO.	FISCAL YEAR	SHEET NO.	TOTAL SHEETS
9	VT.	96A	1927	12	103

PLAN  
 CHECKED BY  
 DATE  
 NOTE BOOK NO. 11724  
 SET OF 117 CHECKED BY  
 NO.



PROFILE  
 CHECKED BY  
 DATE  
 NOTE BOOK NO. 11724  
 SET OF 117 CHECKED BY  
 NO.



SERIES F No. 96A  
 SHEET 12 OF 103