

WOOD GUARD RAIL REQUIRED
RIGHT
 STA. 87+01 TO 87+45 LENGTH 44 FT.
 STA. 95+18 TO 95+62 LENGTH 44 FT.
LEFT
 STA. 87+01 TO 87+45 LENGTH 44 FT.
 STA. 88+10 TO 88+44 LENGTH 34 FT.
 STA. 95+18 TO 95+62 LENGTH 44 FT.
TOTAL THIS SHEET 23
220 FT.

CABLE GUARD RAIL REQUIRED
RIGHT
 STA. 88+05 TO 88+35 LENGTH 30 FT.
 STA. 88+53 TO 88+53 LENGTH 0 FT.
TOTAL THIS SHEET 40 FT.
Left
 Sta. 87+00 To 89+33 233 Ft
 Total This Sheet 446 Ft

NEW CULVERTS REQUIRED
 STA. 87+13 18" PRECAST CONCRETE ON CAST IRON PIPE LENGTH 40 FT.
 CLASS A (1-2-4) CONCRETE 19 C.Y.
 REINFORCING STEEL 60 LB.
 STA. 95+60 15" PRECAST CONCRETE ON CAST IRON PIPE LENGTH 40 FT.
 CLASS B (1-2-5) CONCRETE 8 C.Y.
 REINFORCING STEEL 33 LB.
 Class A (1-2-4) Concrete 11 c.y.

REPAIRS TO CULVERTS
 STA. 88+32 3'x6" PRECAST CONCRETE BOX
 CLASS A (1-2-4) CONCRETE 1.4 C.Y.
 STONE MASONRY 3.0 C.Y.
 REPAIRS 48.00 FT.

SUBBASE OF GRAVEL REQUIRED
 STA. 84+00 TO 86+00 8" SUBBASE LENGTH 200 FT.
TOTAL THIS SHEET 200 FT.

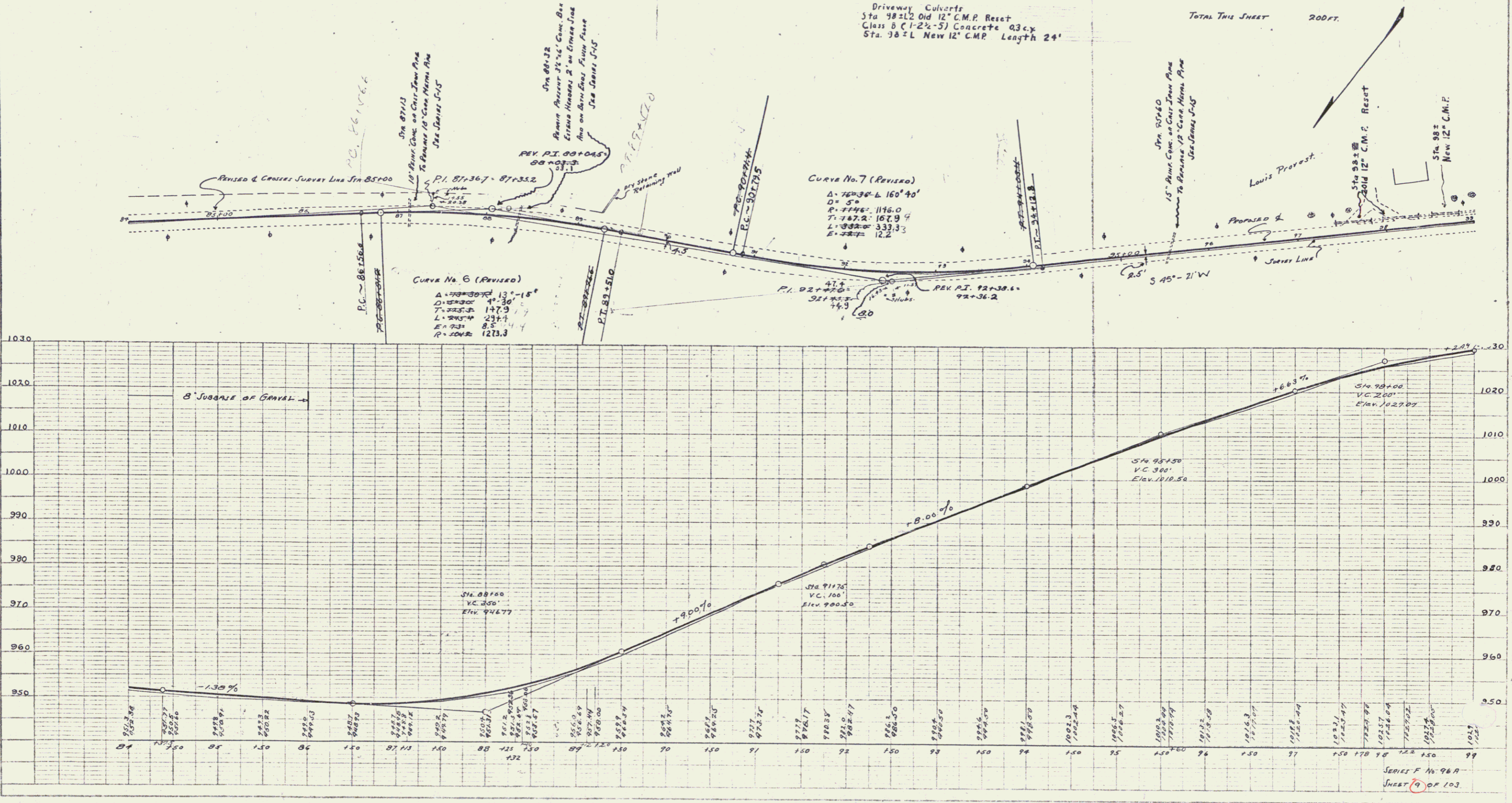
FED. ROAD DIST. NO.	STATION	FED. AID PROJ. NO.	FISCAL YEAR	SHEET NO.	TOTAL SHEETS
9	11	36A	1927	9	103

PLAN

DATE	BY	REVISION

PROFILE

DATE	BY	REVISION



SERIES F No. 96A
 SHEET 9 OF 103

8