

WOOD GUARD RAIL REQUIRED  
 RIGHT  
 STA. 77+25 TO 77+48-16 LENGTH 23 FT.  
 LEFT  
 STA. 77+85 TO 77+99 LENGTH 14 FT.  
 TOTAL THIS SHEET 47 FT.

CABLE GUARD RAIL REQUIRED  
 STA. 75+50 TO 74+00 LENGTH 150 FT.  
 STA. 74+00 TO 74+40-20 LENGTH 40 FT.  
 STA. 74+40-20 TO 74+50 LENGTH 10 FT.  
 TOTAL THIS SHEET 200 FT.

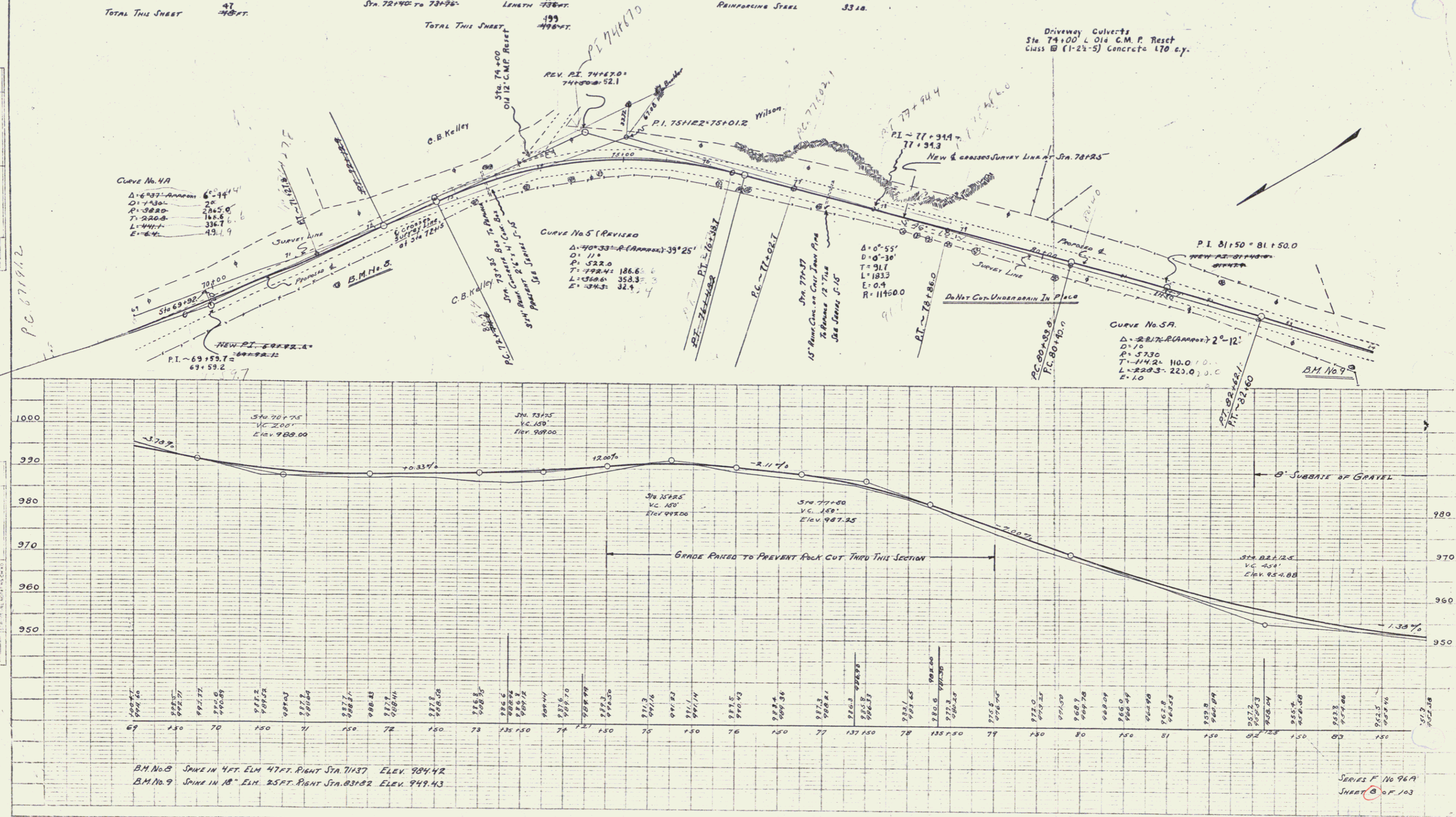
NEW CULVERTS PROVIDED  
 STA. 73+35 3'x4' REIN. CONCRETE BOX CULVERT  
 CLASS A (1-2-4) CONCRETE 24"x24" 25.1  
 REINFORCING STEEL 1610 LB.  
 STA. 77+37 15" REIN. CONCRETE OR CAST IRON PIPE LENGTH 34 FT.  
 CLASS B (1-2-5) CONCRETE 24"x17"  
 REINFORCING STEEL 33 LB.

SUBBASE OF GRAVEL REQUIRED  
 STA. 82+00 TO 84+00 6" IN SUBBASE LENGTH 200 FT.  
 TOTAL THIS SHEET 200 FT.

| FED. ROAD DIST. NO. | STATE | FED. AID PROJ. NO. | FISCAL YEAR | SHEET NO. | TOTAL SHEETS |
|---------------------|-------|--------------------|-------------|-----------|--------------|
| 9                   | VT    | 96A                | 1967        | 8         | 703          |

|              |          |          |
|--------------|----------|----------|
| PLAN         | SCALE    | 1" = 40' |
| PROPOSED     | AS SHOWN |          |
| NOT TO SCALE |          |          |

|              |          |         |
|--------------|----------|---------|
| PROFILE      | SCALE    | 1" = 2' |
| PROPOSED     | AS SHOWN |         |
| NOT TO SCALE |          |         |



SERIES F No 96A  
 SHEET 8 OF 103