

INDEX OF SHEETS

1.	Title Sheet	
2.	Typical Sheet, Mainline	
3.	Typical & Profile Sheet, Sideline	
4.	Summary of Quantities	
5.	Item Detail & Drainage Sheet	
6.	Earthwork & Grade Sheet	
7-8.	Blank	
9-11.	R.O.W. Plan Sheets	
12-14.	Plan Sheets	
15.	Profile Sheet	
16.	8-1 Easing Tables	12/ 8/71
17.	8-5 Slope Rounding	12/ 8/71
18.	8-2 Roadways & Underdrain	3/ 8/72 R
19.	8-6 R.C.D.I. (Use in Ditches)	4/ 4/73
20.	8-8 R.C.D.I. - W/Grate (Std. Sec.)	12/ 8/71
21.	8-10 Top for a Drop Inlet with Bituminous Concrete Curb	12/ 6/71
22.	9-11 Cast Iron Grate, Type A	4/25/72 e
23.	9-18 Cast Iron Grate, Type B	11/14/72 e
24.	E-2 Const. Approach Signs	10/19/73 R
25.	E-5 Bolterment Project Signs	9/11/73 R
26.	E-6 W-Project Const. Signs	12/14/73 R
27.	E-7 Delimitors & Barricades for Const. Areas	9/19/73 R
28-29.	Blanks	
30-33.	Cross Sections, Mainline	
34-37.	Cross Sections, Sideline	

DERBY
BP 041-5-7310
RECORD PLANS
MATERIALS

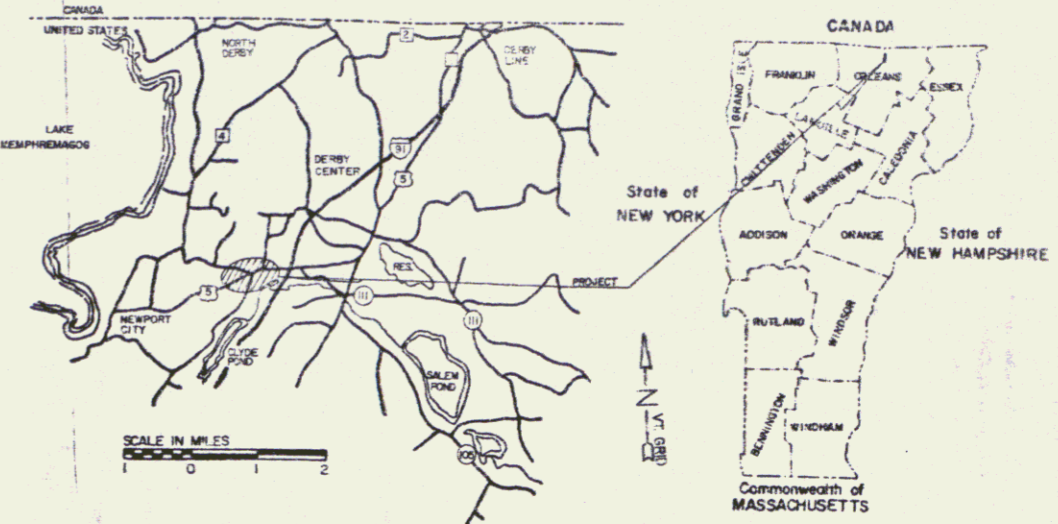
SUB BASE OF GRAVEL - DAGGETT PIT, DERBY LINE, VT.
 CULVERTS - LANE METAL PRODUCTS CO., INC., BALLSTON SPA, N.Y.
 EASTERN CULVERT CO., LEOMINSTER, MASS. (SMOOTH-LINED)
 CAST IRON GRATES - E. L. LEBRON FOUNDRY CO., BROCKTON, MASS.
 CONCRETE, CLASS B - CALKINS RED-MIX, COVENTRY, VT.
 BITUMINOUS CONCRETE PAVEMENT 9 BIT. CONC. CURB - L.M. PIKE, COVENTRY, VT.
 FERTILIZER & SEEDS: GRISWOLD FENCE CO., ESSEX JCT., VT.

PROJECT BEGUN: DECEMBER, 1973
 PROJECT COMPLETED: MAY, 1976
 CONTRACTOR: STATE OF VERMONT, DISTRICT 9
 RECORD PLANS - P.F. WU, MARCH, 1976

STATE OF VERMONT
DEPARTMENT OF HIGHWAYS



PROPOSED IMPROVEMENT
 BETTERMENT PROJECT
TOWN OF DERBY
COUNTY OF ORLEANS
 NEWPORT-DERBY LINE ROAD

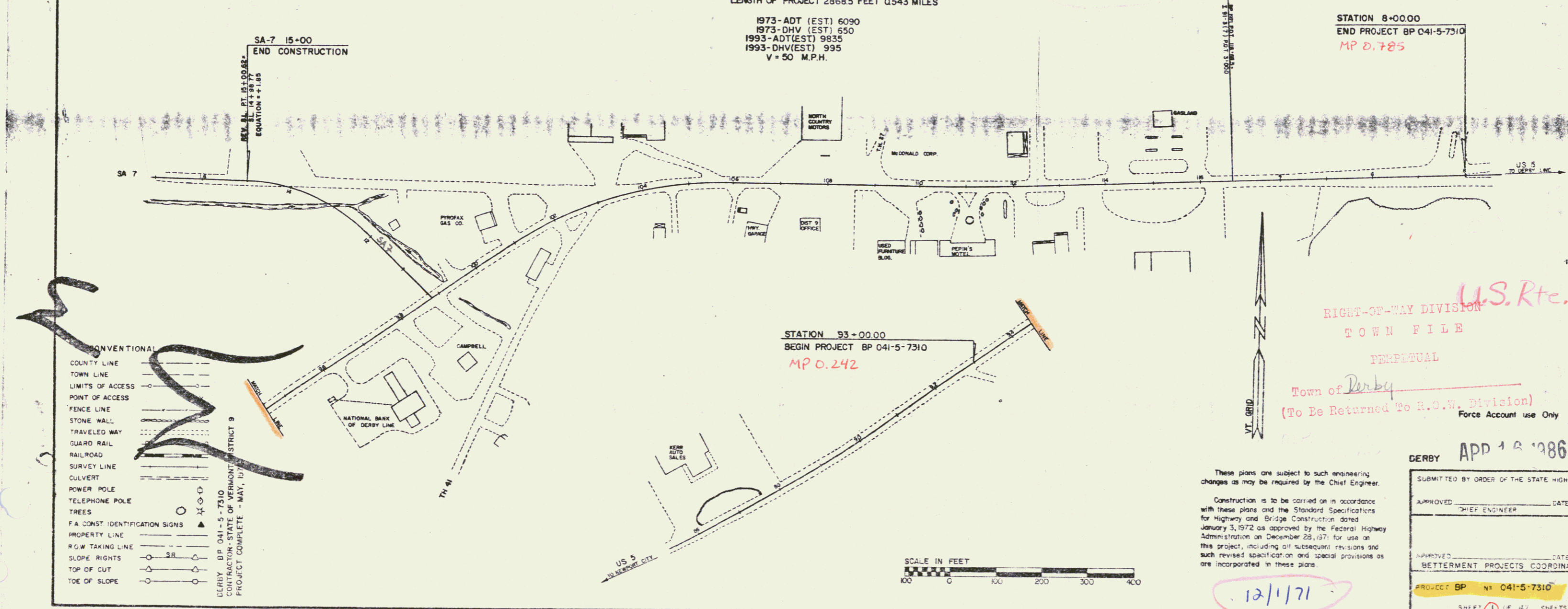


BEGINNING AT A POINT APPROXIMATELY 1277 FEET EASTERLY OF THE NEWPORT-DERBY TOWN LINE AND EXTENDING IN AN EASTERLY DIRECTION 0.543 MILES.

LENGTH OF ROADWAY 2868.5 FEET 0.543 MILES
 LENGTH OF PROJECT 2868.5 FEET 0.543 MILES

1973-ADT (EST) 6090
 1973-DHV (EST) 850
 1993-ADT(EST) 9835
 1993-DHV(EST) 995
 V = 50 M.P.H.

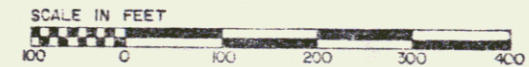
Route: US 5
Pin # 99R290



CONVENTIONAL

---	COUNTY LINE
---	TOWN LINE
---	LIMITS OF ACCESS
---	POINT OF ACCESS
---	FENCE LINE
---	STONE WALL
---	TRAVELED WAY
---	GUARD RAIL
---	RAILROAD
---	SURVEY LINE
---	CULVERT
---	POWER POLE
---	TELEPHONE POLE
---	TREES
---	F.A. CONST. IDENTIFICATION SIGNS
---	PROPERTY LINE
---	R.O.W. TAKING LINE
---	SLOPE RIGHTS
---	TOP OF CUT
---	TOE OF SLOPE

DERBY, BP 041-5-7310
 CONTRACTING-STATE OF VERMONT
 PROJECT COMPLETE - MAY, 1976



These plans are subject to such engineering changes as may be required by the Chief Engineer.

Construction is to be carried on in accordance with these plans and the Standard Specifications for Highway and Bridge Construction dated January 3, 1972 as approved by the Federal Highway Administration on December 28, 1971 for use on this project, including all subsequent revisions and such revised specifications and special provisions as are incorporated in these plans.

DERBY APP 18 1986

SUBMITTED BY ORDER OF THE STATE HIGHWAY BOARD

APPROVED _____ DATE _____
 CHIEF ENGINEER

APPROVED _____ DATE _____
 BETTERMENT PROJECTS COORDINATOR

PROJECT BP # 041-5-7310

SHEET 1 OF 4 SHEETS

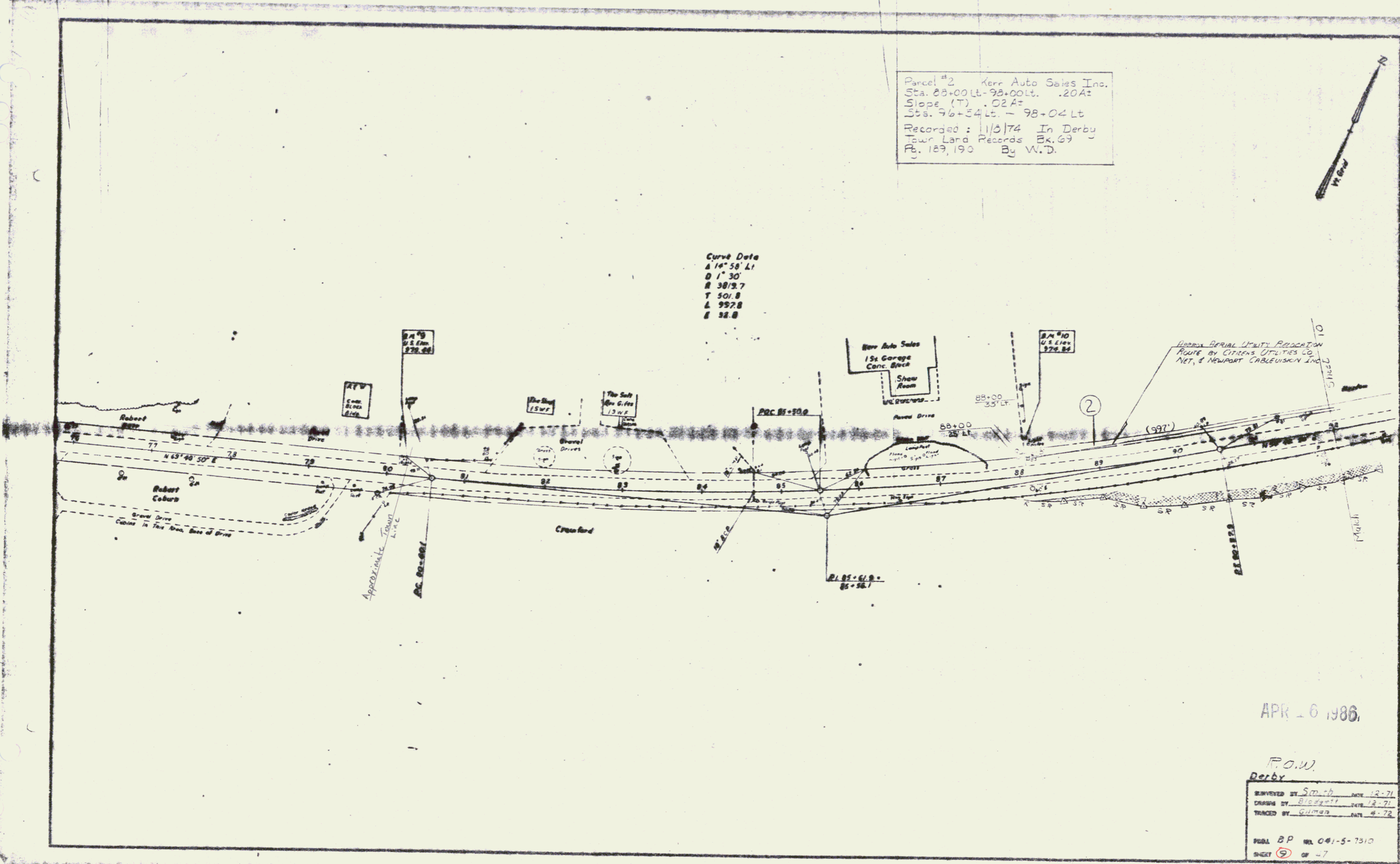
DATE 12/17/70

12/171

Parcel #2 Kerr Auto Sales Inc.
 Sta. 88+00 Lt. - 98+00 Lt. .20A±
 Slope (T) .02A±
 Sta. 96+54 Lt. - 98+04 Lt.
 Recorded: 1/3/74 In Derby
 Town Land Records Bk. 69
 Pg. 189, 190 By W.D.



Curve Data
 Δ 14° 58' Lt
 D 1" 30'
 R 3812.7
 T 501.8
 L 992.8
 E 32.8

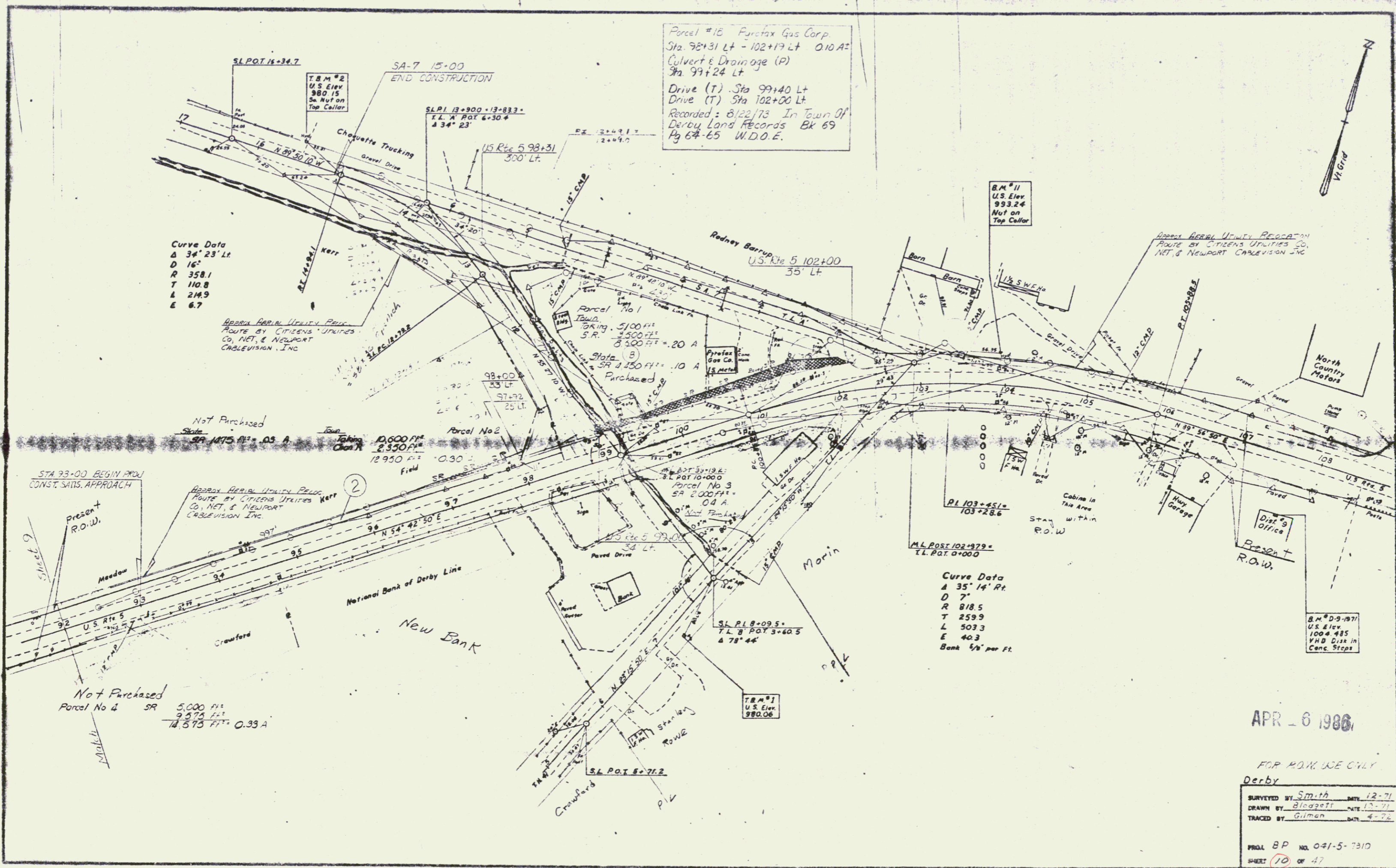


APR 6 1986

R.O.W.
 Derby

DESIGNED BY	Smith	DATE	12-71
DRAWN BY	B. J. Smith	DATE	12-71
TRACED BY	Quimby	DATE	4-72

PLANS BP No. 041-5-7310
 SHEET 9 OF 7
 0-7



Parcel #15 Fairfax Gas Corp.
 Sta. 98+31 Lt - 102+19 Lt 0.10 A.
 Culvert & Drainage (P)
 Sta. 99+24 Lt
 Drive (T) Sta. 99+40 Lt
 Drive (T) Sta. 102+00 Lt
 Recorded: 8/22/73 In Town Of
 Derby Land Records Bk 69
 Pg 64-65 W.D.O.E.

Curve Data
 Δ 34° 23' Lt
 D 16'
 R 358.1
 T 110.8
 L 214.9
 E 6.7

Curve Data
 Δ 35° 14' Rt
 D 7'
 R 818.5
 T 259.9
 L 503.3
 E 40.3
 Bank 1/2" per Ft.

STA 93+00 BEGIN PROJ
 CONST. SANS. APPROACH

Not Purchased
 Parcel No 4 SR 5,000 Ft.
 9,575 Ft.
 14,575 Ft. 0.33 A

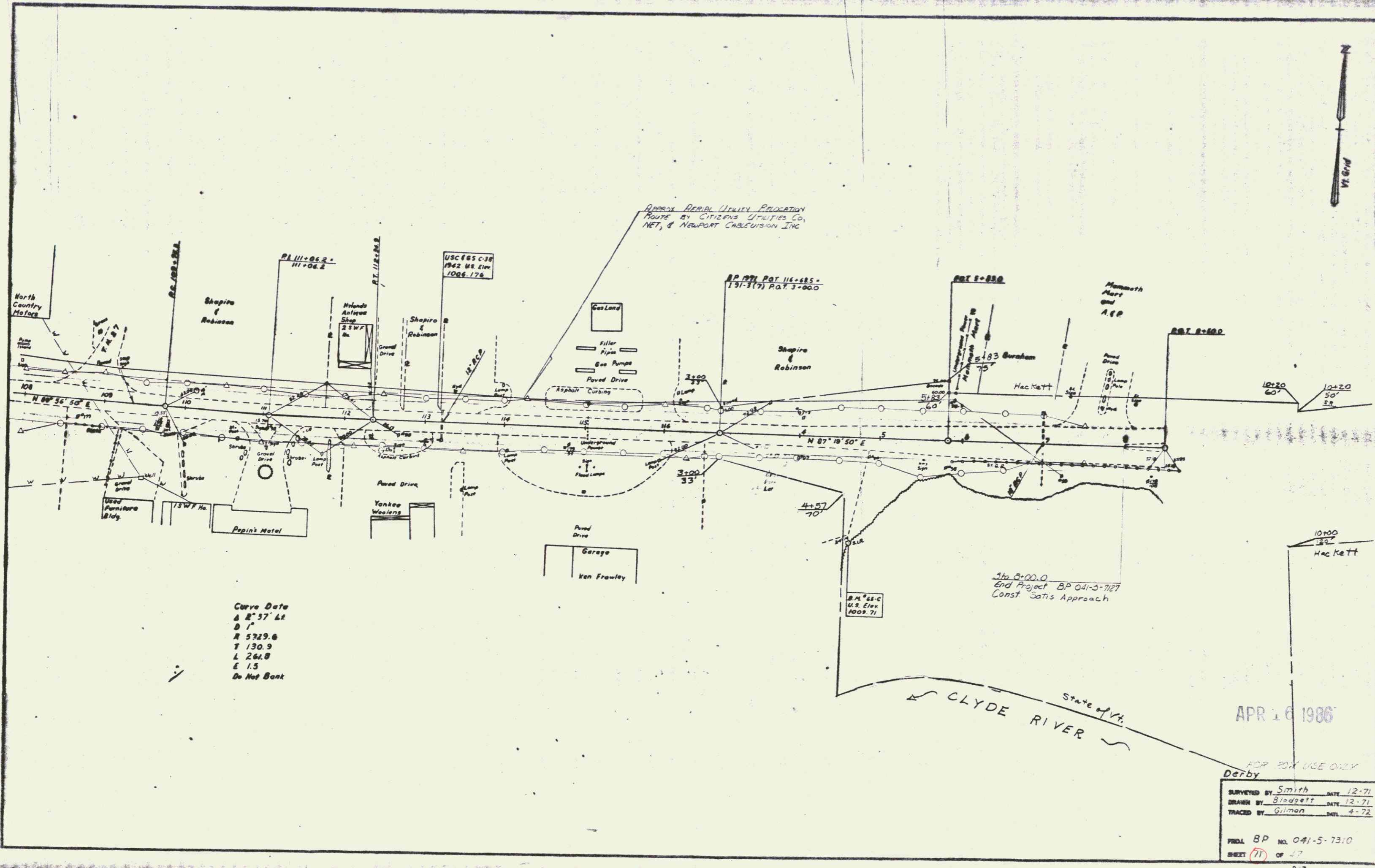
APR - 6 1986

FOR P.O.K. USE ONLY
 Derby

SURVEYED BY	Smith	DATE	12-71
DRAWN BY	Bledgett	DATE	12-71
TRACED BY	Gilman	DATE	4-72

PROJ. BP NO. 0-21-5-7310
 SHEET 10 OF 47





Curve Data
 Δ 2° 37' 42"
 R 5729.6
 T 130.9
 L 264.8
 E 15
 Do Not Bank

Approx Aerial Utility Placement
 Route by Citizens Utilities Co,
 NET, & Newport Cablevision Inc

B.M. 58-C
 U.S. Elev.
 1009.71

Sta. 0+00.0
 End Project BP 041-5-7310
 Const. Satisfactory Approach

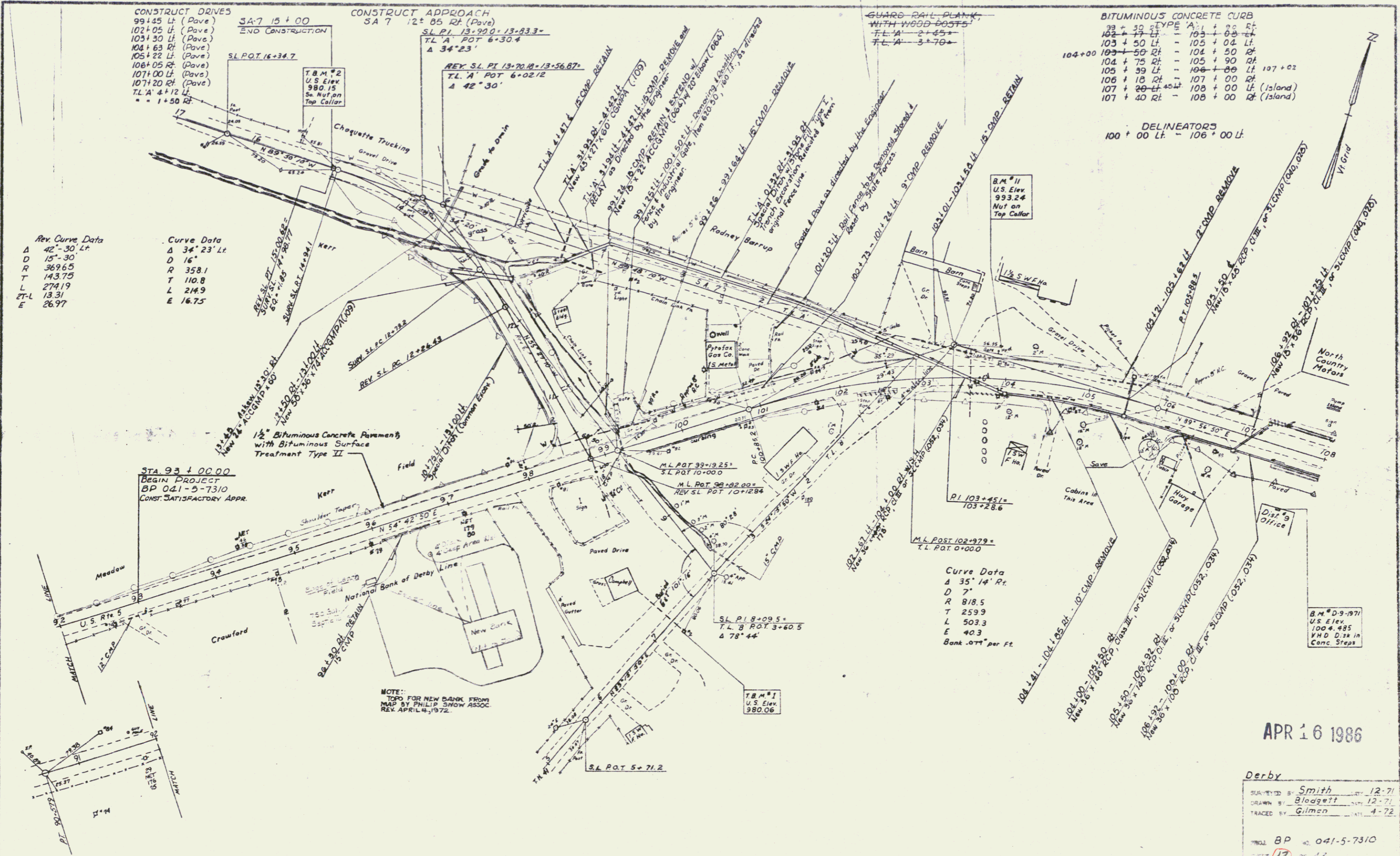
APR 16 1986

FOR BOX USE ONLY
 Derby

SURVEYED BY	Smith	DATE	12-71
DRAWN BY	Blodgett	DATE	12-71
TRACED BY	Gilman	DATE	4-72

PROJ. BP NO. 041-5-7310
 SHEET 11 OF 17
 0-7

4



Rev. Curve Data

A	42°-30' Lt.
D	15°-30'
R	369.65
T	143.75
L	274.19
ZT-L	13.31
E	26.97

Curve Data

A	34°-23' Lt.
D	16°
R	358.1
T	110.8
L	214.9
E	16.75

BITUMINOUS CONCRETE CURB

33 x 30 TYPE A	103 + 00 Lt. - 103 + 00 Rt.
33 x 30 TYPE A	103 + 00 Lt. - 105 + 00 Lt.
33 x 30 TYPE A	104 + 50 Rt. - 104 + 50 Rt.
33 x 30 TYPE A	104 + 75 Rt. - 105 + 90 Rt.
33 x 30 TYPE A	105 + 39 Lt. - 106 + 00 Lt.
33 x 30 TYPE A	106 + 10 Rt. - 107 + 00 Rt.
33 x 30 TYPE A	107 + 20 Lt. - 108 + 00 Lt. (Island)
33 x 30 TYPE A	107 + 40 Rt. - 108 + 00 Rt. (Island)

DELINEATORS
100 + 00 Lt. - 106 + 00 Lt.

APR 16 1986

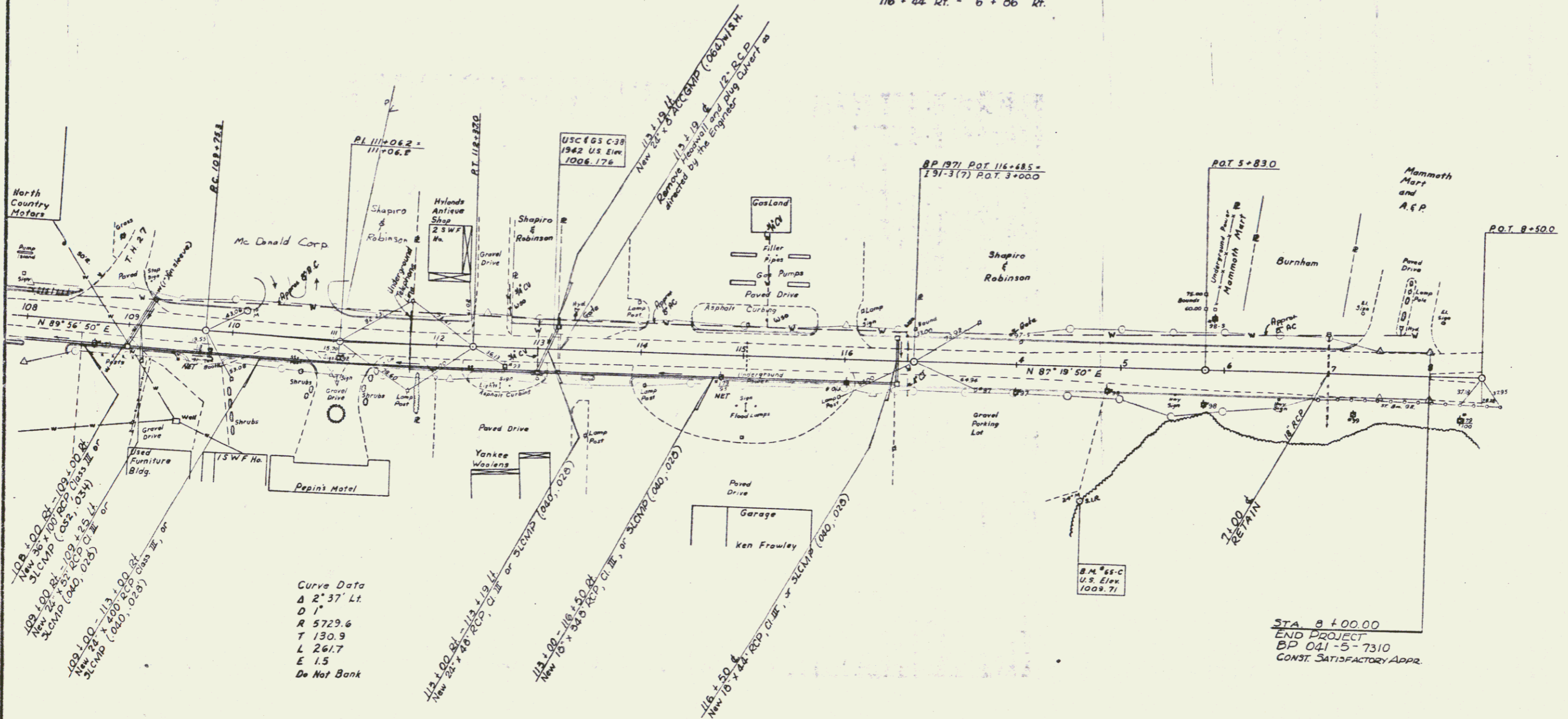
Derby
 SURVEYED BY: Smith 12-71
 DRAWN BY: Blodgett 12-71
 TRACED BY: Gilman 4-72
 PROJ. BP 041-5-7310
 SHEET 12 OF 47

5

CONSTRUCT DRIVES
 108 + 20 Rt (Pave)
 109 + 75 Rt (Pave)
 110 + 60 Lt (Pave)
 111 + 09 Rt (Pave)
 112 + 17 Rt (Pave)
 112 + 52 Lt (Pave)
 113 + 26 Rt (Pave)
 113 + 75 Rt (Pave)
 114 + 27 Lt (Pave)
 115 + 90 Lt (Pave)
 116 + 30 Rt (Pave)

CONSTRUCT APPROACH
 108 + 85 Lt (T.H. 27) (Pave)

BITUMINOUS CONCRETE CURB
 TYPE 12
 108 + 00 Lt - 108 + 55 Lt (Island)
 108 + 40 Rt - 109 + 60 Rt
 109 + 19 Lt - 110 + 25 Lt
 109 + 95 Rt - 110 + 85 Rt
 109 + 62 - 109 + 85 Rt (Island)
 111 + 00 Lt - 112 + 37 Lt
 111 + 33 Rt - 112 + 02 Rt
 112 + 32 Rt - 113 + 08 Rt
 112 + 70 Lt - 114 + 05 Lt
 113 + 43 Rt - 113 + 55 Rt (Island)
 113 + 90 Rt - 116 + 09 Rt
 114 + 50 Lt - 115 + 72 Lt
 116 + 11 Lt - 7 + 24 Lt
 116 + 44 Rt - 6 + 06 Rt



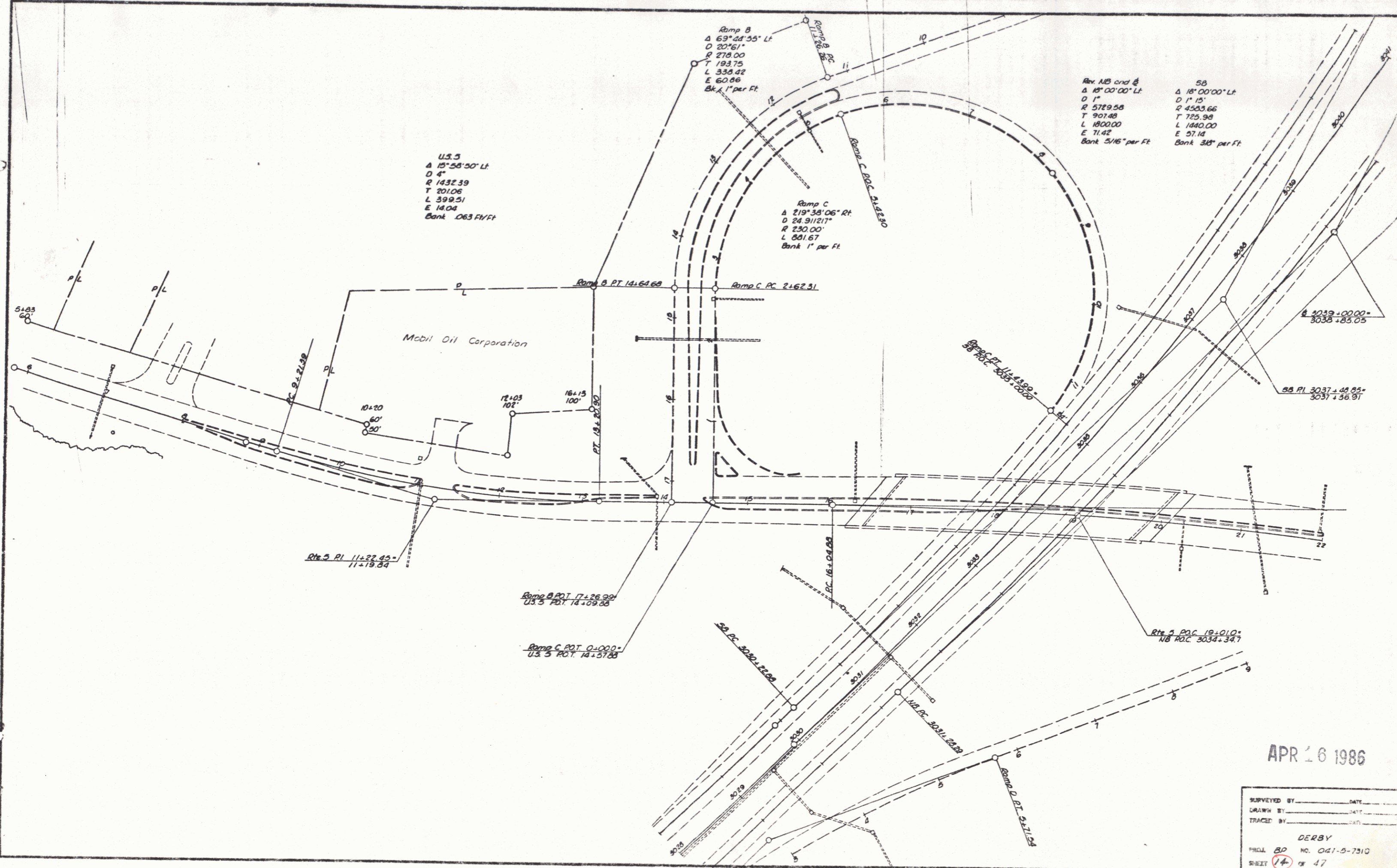
Curve Data
 Δ 2° 37' Lt
 D 1'
 R 5729.6
 T 130.9
 L 261.7
 E 1.5
 Do Not Bank

STA 8 + 00.00
 END PROJECT
 BP 041-5-7310
 CONST. SATISFACTORY APPR.

APR 16 1986

Derby
 SURVEYED BY Smith DATE 12-71
 DRAWN BY Blodgett DATE 12-71
 TRACED BY Gilman DATE 4-72
 PROJ. BP NO. 041-5-7310
 SHEET 13 OF 47

6



U.S. 5
 Δ 15°58'50" Lt
 D 4"
 R 1432.39
 T 201.06
 L 399.51
 E 14.04
 Bank .063 Ft/Ft

Ramp B
 Δ 69°24'55" Lt
 D 20'61"
 R 278.00
 T 193.75
 L 338.42
 E 60.86
 Bank 1" per Ft

Ramp C
 Δ 219°38'06" Rt
 D 24'91/217"
 R 230.00'
 L 801.67
 Bank 1" per Ft

Rev. AB and B
 Δ 18°00'00" Lt
 D 1"
 R 5729.58
 T 907.48
 L 1800.00
 E 71.42
 Bank 5/16" per Ft

5B
 Δ 18°00'00" Lt
 D 1"
 R 4533.66
 T 725.98
 L 1440.00
 E 57.14
 Bank 3/8" per Ft

APR 16 1986

SURVEYED BY	DATE
DRAWN BY	DATE
TRACE BY	DATE
DERBY	
PROJ. 82	NO. 041-S-7310
SHEET 14	OF 47

7