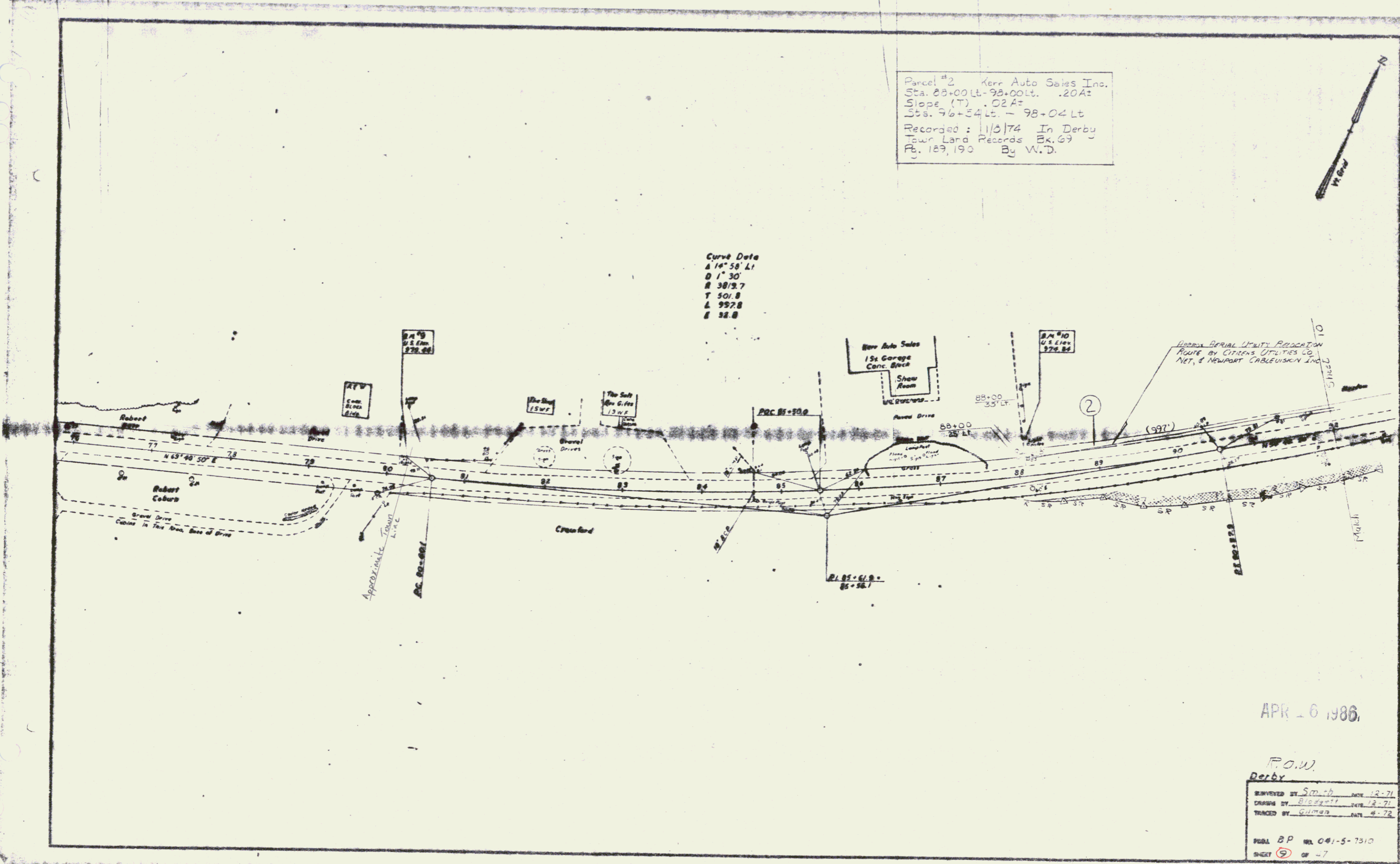


Parcel #2 Kerr Auto Sales Inc.  
 Sta. 88+00 Lt. - 98+00 Lt. .20A±  
 Slope (T) .02A±  
 Sta. 96+54 Lt. - 98+04 Lt.  
 Recorded: 1/3/74 In Derby  
 Town Land Records Bk. 69  
 Pg. 189, 190 By W.D.



Curve Data  
 Δ 14° 58' Lt  
 D 1" 30'  
 R 3812.7  
 T 501.8  
 L 992.8  
 E 32.8



APR 6 1986

R.O.W.  
 Derby

DESIGNED BY	Smith	DATE	12-71
DRAWN BY	B. J. Smith	DATE	12-71
TRACED BY	Quimby	DATE	4-72

PLAT BP No. 041-5-7310  
 SHEET 9 OF 7  
 0-7