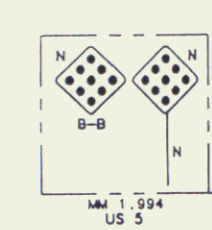
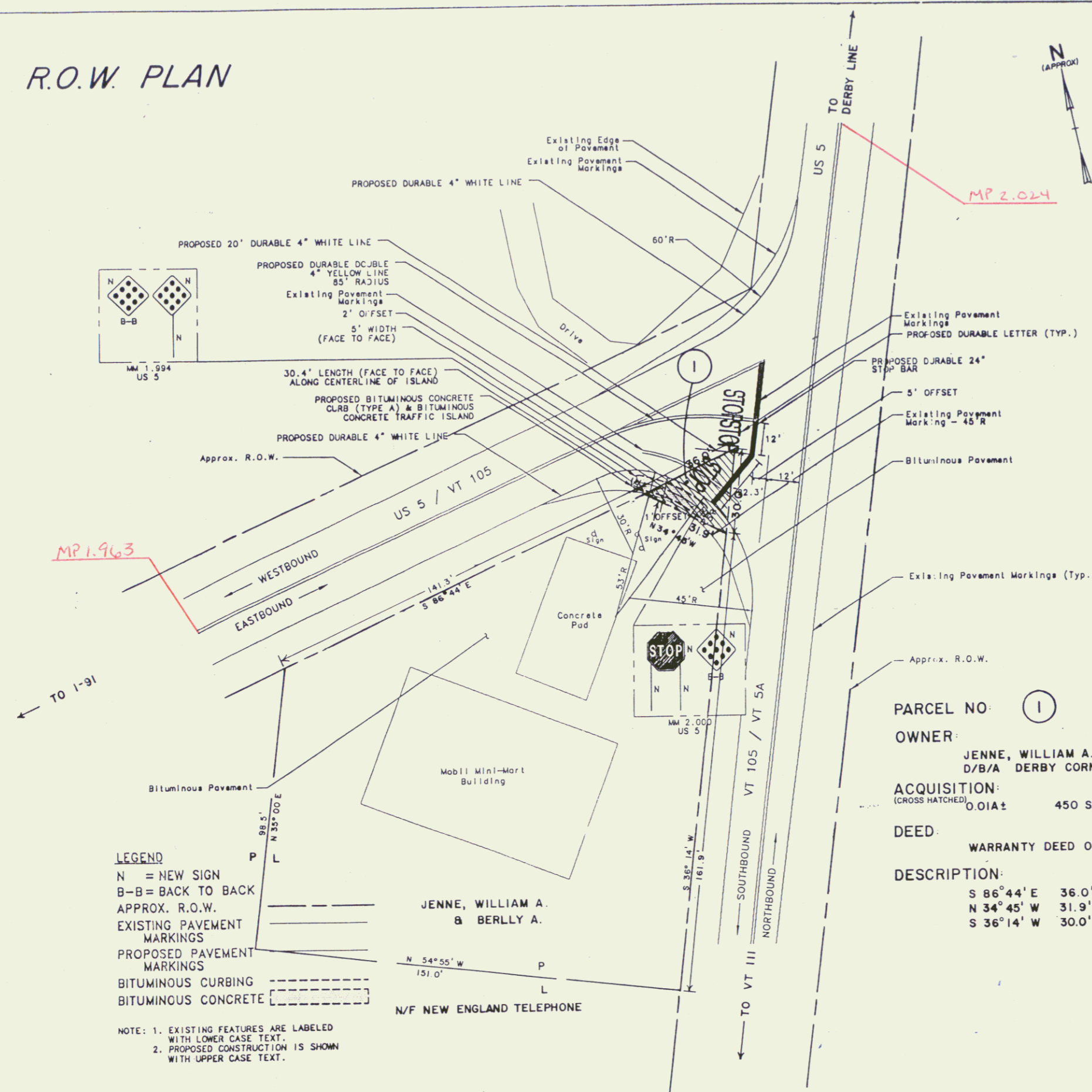


R.O.W. PLAN

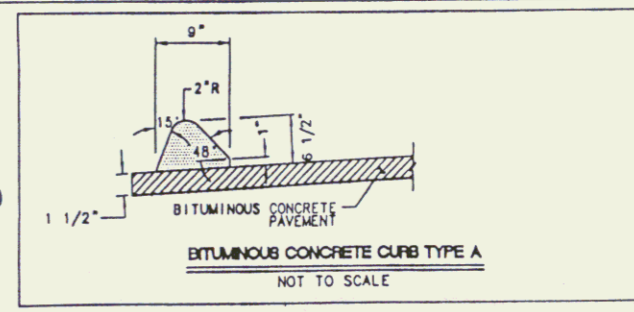
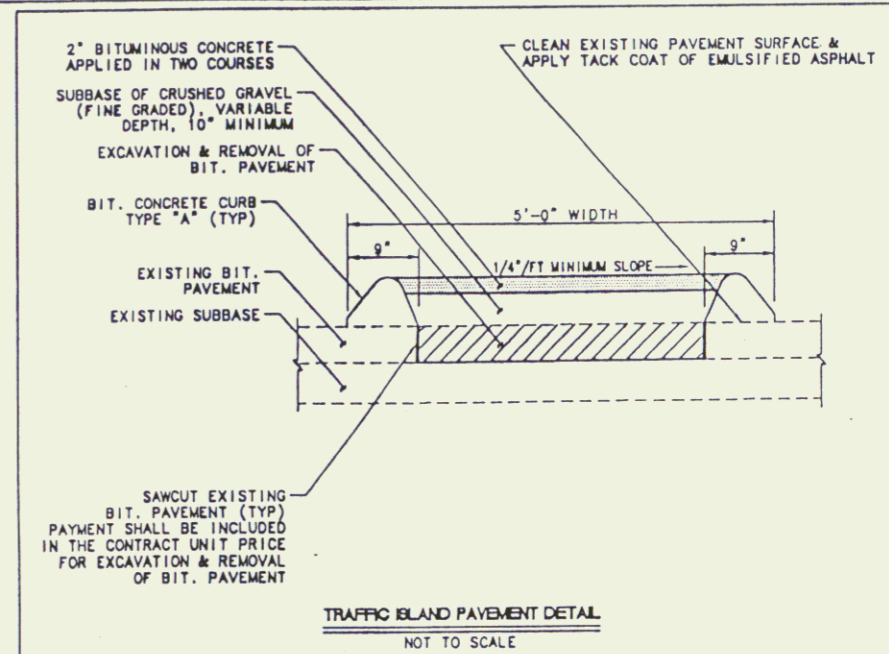


LEGEND

- N = NEW SIGN
- B-B = BACK TO BACK
- APPROX. R.O.W.
- EXISTING PAVEMENT MARKINGS
- PROPOSED PAVEMENT MARKINGS
- BITUMINOUS CURBING
- BITUMINOUS CONCRETE

NOTE: 1. EXISTING FEATURES ARE LABELED WITH LOWER CASE TEXT.
 2. PROPOSED CONSTRUCTION IS SHOWN WITH UPPER CASE TEXT.

		QUANTITIES			
ITEM NO.	DESCRIPTION	LOCATION	QUANTITY	ROUNDING	TOTAL
203.28	EXCAVATION OF SURFACES & PAVEMENT	TRAFFIC ISLAND	4.7 C.Y.	0.3 C.Y.	5.0 C.Y.
301.28	SUBBASE OF CRUSHED GRAVEL (FINE GRADED)	TRAFFIC ISLAND	6.3 TON	0.7 TON	7.0 TON
818.30	BITUMINOUS CONCRETE CURB, TYPE A	TRAFFIC ISLAND	1.35 TON	0.85 TON	2.0 TON
818.47	BITUMINOUS CONCRETE CUTTERS & TRAFFIC ISLANDS	TRAFFIC ISLAND	1.22 TON	0.78 TON	2.0 TON
848.27	PAINTED CURB	TRAFFIC ISLAND	86.5 L.F.	3.5 L.F.	70 L.F.
848.40	DURABLE 4" WHITE LINE	N.W. SHOULDER US 5/VT 105 S.W. SHOULDER US 5/VT 105 LANE DIVIDER	112 L.F. 115 L.F. 20 L.F.		247 L.F.
848.41	DURABLE 4" YELLOW LINE	INTERSECTION OF US 5 & VT 5A	116 L.F.	9 L.F.	125 L.F.
848.46	DURABLE 24" STOP BAR	INTERSECTION OF US 5 & VT 5A	34.3 L.F.	0.7 L.F.	35 L.F.
848.50	DURABLE LETTER OR SYMBOL	INTERSECTION OF US 5 & VT 5A - "STOP" (2)	8 EA.	0 EA.	8 EA.
848.82	REMOVAL OF EXISTING PAVEMENT MARKINGS	4" WHITE N.W. SHOULDER US 5/VT 105 S.W. SHOULDER US 5/VT 105 4" YELLOW INTERSECTION US 5 & VT 5A INTERSECTION US 5 & VT 5A 24" STOP BAR INTERSECTION US 5 & VT 5A INTERSECTION US 5 & VT 5A "STOP" MARKINGS INTERSECTION US 5 & VT 5A	38.7 S.F. 33.3 S.F. 44.7 S.F. 28.7 S.F. 60.0 S.F. 30.0 S.F. 48.0 S.F.	20.8 S.F.	300.0 S.F.



PARCEL NO. 1
 OWNER: JENNE, WILLIAM A. & BERLLY A.
 D/B/A DERBY CORNER MINI-MART
 ACQUISITION: (CROSS HATCHED) 0.01A ± 450 S.F. ± (|||||)
 DEED: WARRANTY DEED OF EASEMENT 06-19-96 BK.147 PG. 89-91
 DESCRIPTION: S 86°44'E 36.0' ± ALONG U.S. 5 & VT 105
 N 34°45' W 31.9' ±
 S 36°14' W 30.0' ± ALONG VT 105 & VT 5A (MAIN ST.)

TRAFFIC ISLAND LAYOUT
 SCALE IN FEET
 0 20 40

RIGHT-OF-WAY DIVISION
 TOWN FILE
 PERPETUAL

Town of **DERBY**
 (To Be Returned To R.O.W. Division)

Vermont Route #105
 and
 Route U.S. 5
 Intersection

R.O.W. SHEET 1
 TRAFFIC ISLAND LAYOUT
 DERBY-CHARLESTON
 project STP SIGN 9248