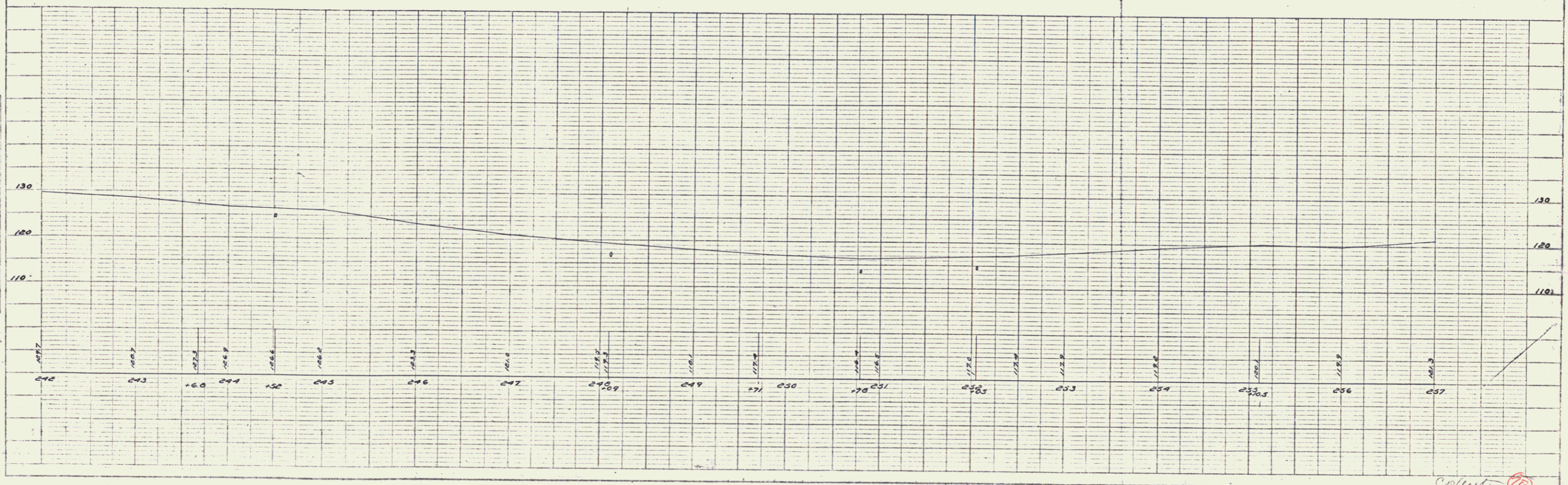
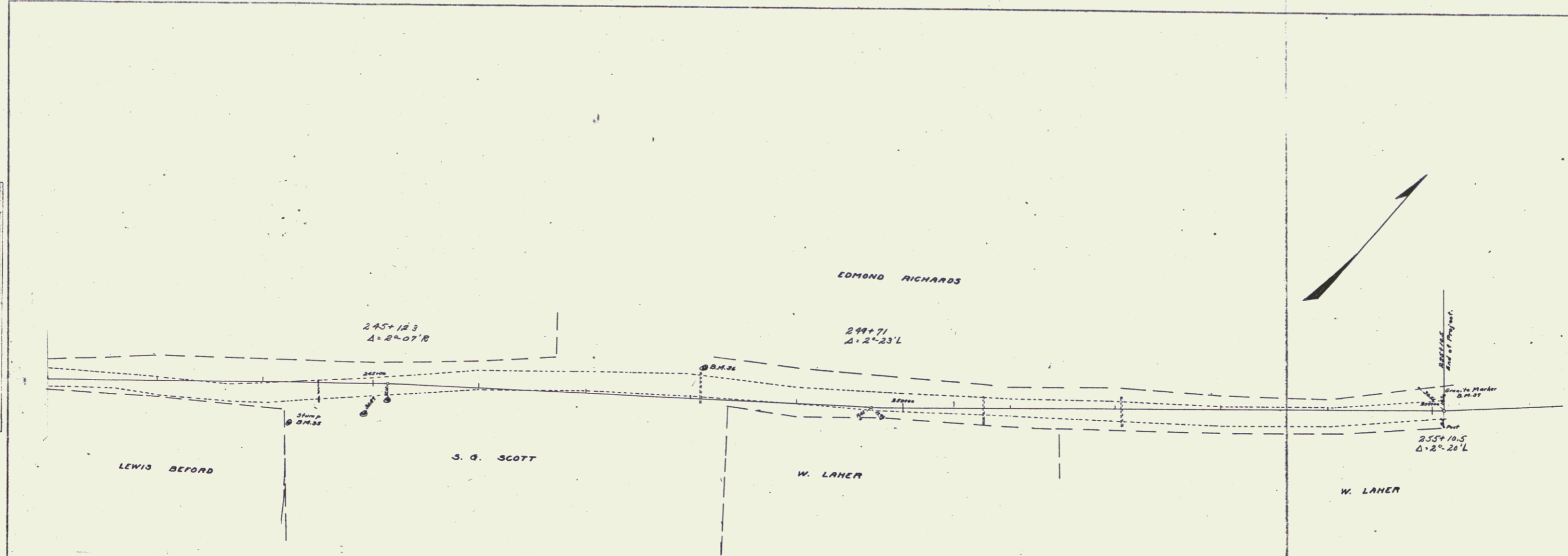


FED. ROAD DIST. NO.	STATE	FED. AID PROJ. NO.	FISCAL YEAR	SHEET NO.	TOTAL SHEETS
9	VT				

PLAN  
 DATE: 11/18/83  
 BY: W.E. Palmer  
 CHECKED: G.L. Paine  
 TITLE: ROUTE 249  
 PROJECT: STATE ST. 249  
 SHEET NO.: 17



PROFILE  
 DATE: 11/18/83  
 BY: W.E. Palmer  
 CHECKED: G.L. Paine  
 TITLE: ROUTE 249  
 PROJECT: STATE ST. 249  
 SHEET NO.: 17

STATE OF VERMONT  
 DEPARTMENT OF TRANSPORTATION  
 ROUTE 249

Created by 249 ST 17