

**CABLE GUARD RAIL REQUIRED**

| STATIONS        | LINE | CONSTANT | BY LENGTH |
|-----------------|------|----------|-----------|
| 266+00 - 267+75 | Rt.  | 15'      | 20'       |
| 270+00 - 271+25 | Rt.  | 12'      | 11'       |

**GRADED COBBLE GUTTER REQUIRED**

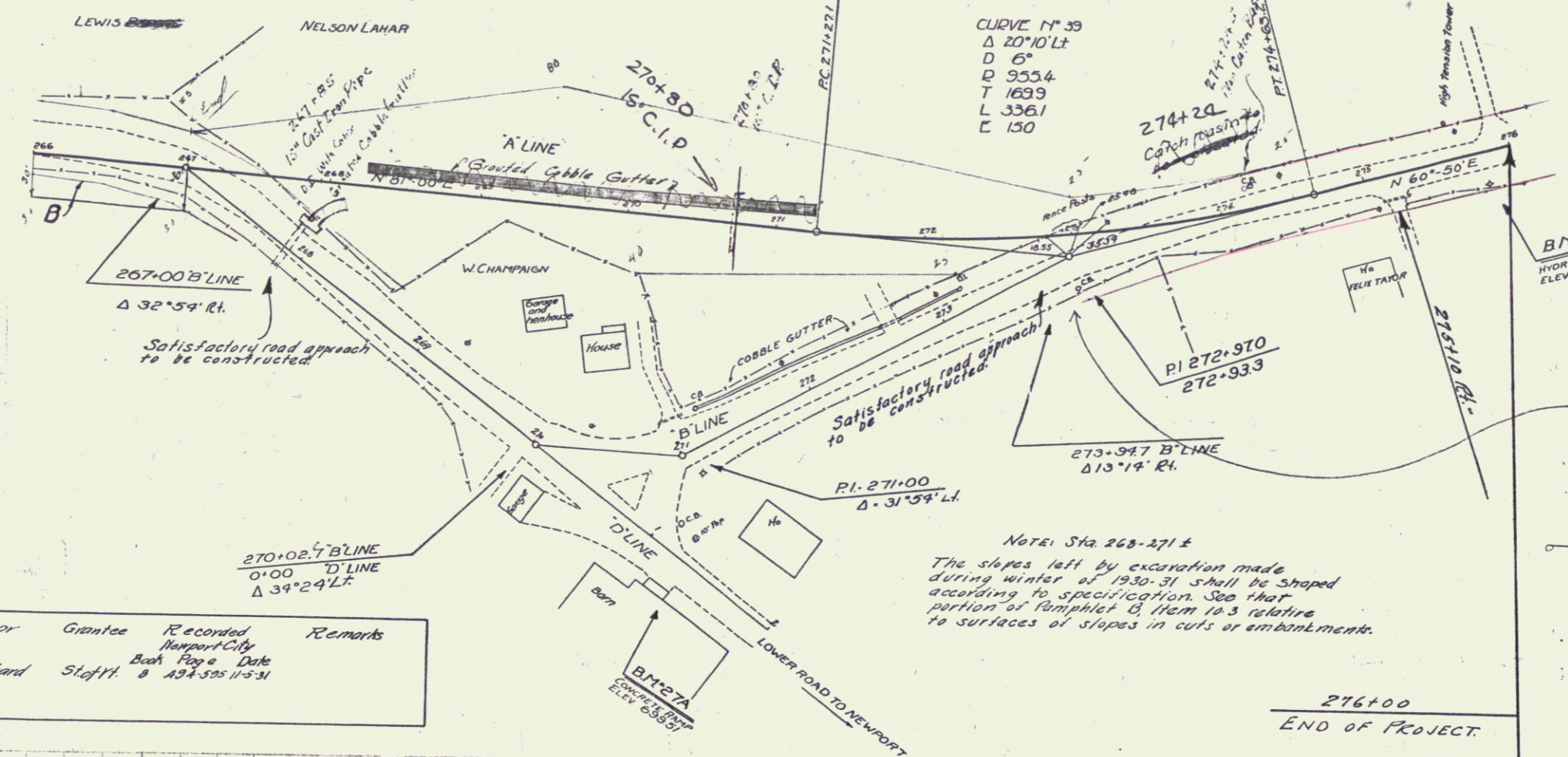
| Stations        | Width | Area         |
|-----------------|-------|--------------|
| 267+25 - 271+25 | 7'-0" | 13.0 sq. ft. |
| 270+00          | 3'-0" | 11.5 sq. ft. |

Wood Guard Rail  
Centering St. Int. 37'

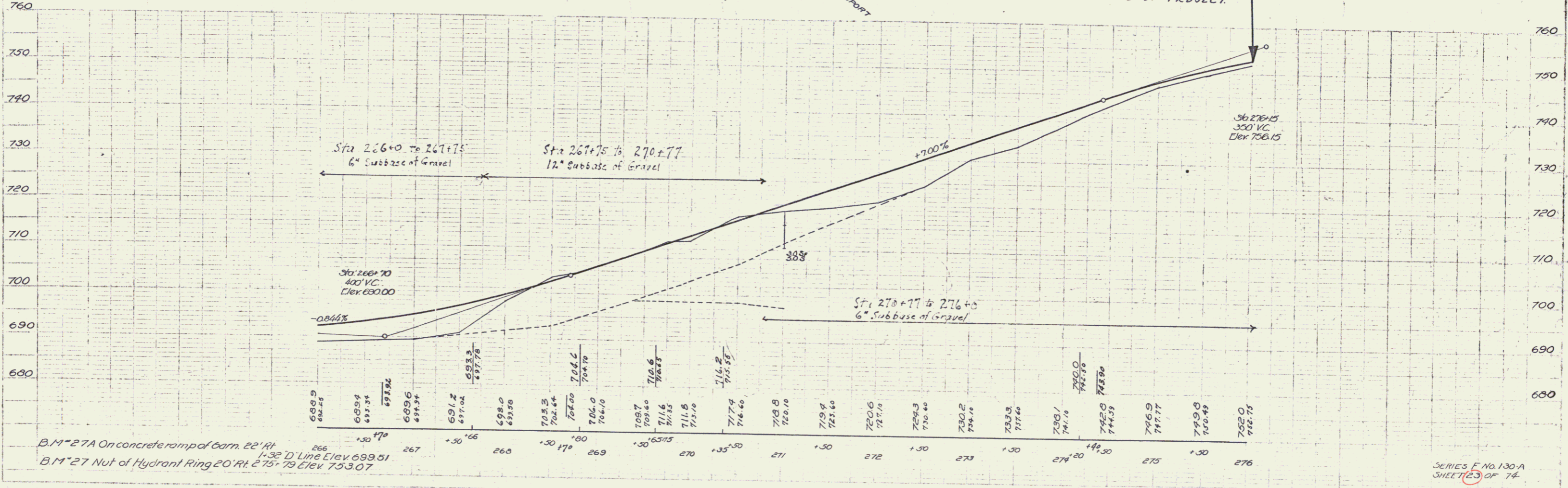
Cast Iron Culverts

| Stations | Diam. | Length | Conc. A     | Reinf. |
|----------|-------|--------|-------------|--------|
| 267+85   | 12"   | 32'    | 2.0 cu. yd. | 106#   |
| 270+00   | 12"   | 30'    | 4.4 cu. yd. | 72#    |

Catch Basin 274+24.1



| Parcel | Kind of Instrument | Date of Instrument | Grantor     | Grantee | Recorded Map or City Book Page & Date | Remarks |
|--------|--------------------|--------------------|-------------|---------|---------------------------------------|---------|
| B      | CCD                | 11-3-31            | A. Bouffard | Steffl  | 8 133:525 11-3-31                     |         |



B.M. 27A On concrete ramp of barn. 22' Rt. 266  
1.32' D' Line Elev. 699.51  
B.M. 27 Nut of Hydrant Ring 20' Rt. 275.79 Elev. 753.07

NO. ROAD STATE PROJ. YEAR SHEET TOTAL  
5 V.C. 130-A 7931 23 74

SERIES F No. 130-A  
SHEET 23 OF 74