

WOOD GUARD RAIL REQUIRED

CHURCH STATION	LEFT	RIGHT
126+76	24'	24'
129+30	24'	24'
131+08	24'	24'

CABLE GUARD RAIL REQUIRED

STATIONS	LEFT	RIGHT	CONSTANT	AV. LENGTH
129+00-130+00	40'	40'	100'	100'
123+55-124+02	40'	40'	113'	113'
125+00-126+00	40'	40'	113'	113'

NEW CAST IRON PIPE CULVERTS REQUIRED

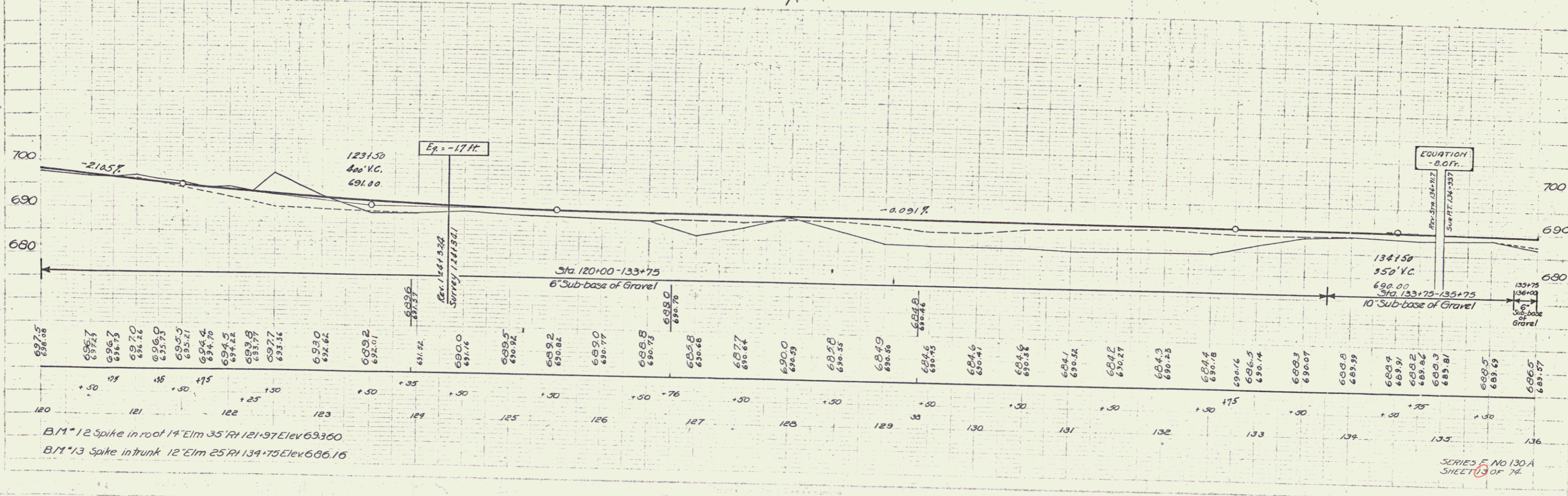
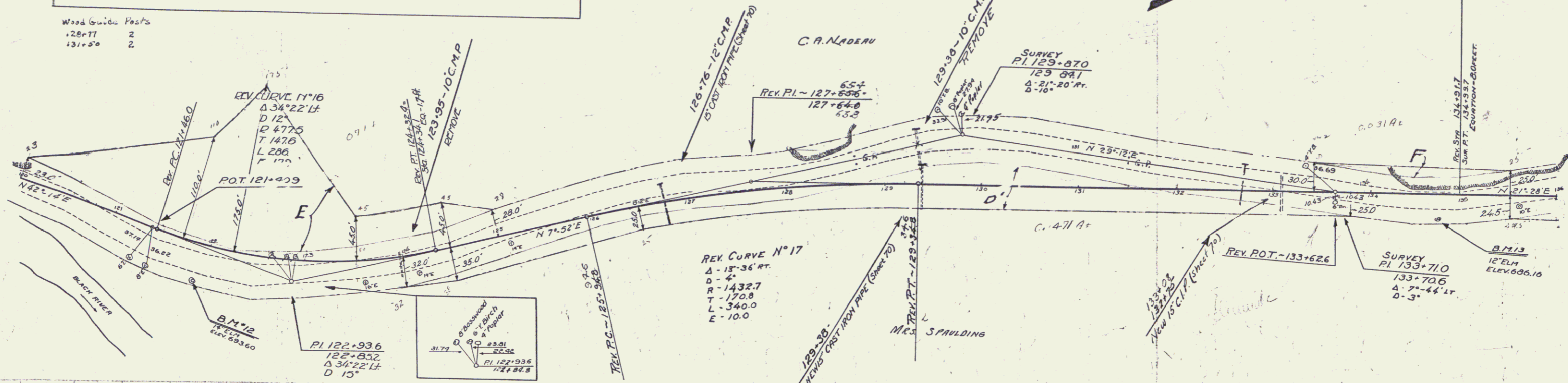
STATION	DIAM	LENG	CONC. A	CONC. C	REIN. STEEL
126+76	15"	45'	-	1.25'	17 lbs.
129+30	15"	45'	-	1.25'	17 lbs.
131+08	15"	45'	-	1.25'	17 lbs.

DIST. NO.	STATE	PLAT.	SECTION
9	VT.	180-A	133 1-3 74

Parcel	Kind of Instrument	Date of Instrument	Grantor	Grantee	Recorded	Remarks
E&F	O.C.D.	6-29-31	C.A. & F. Nadeau	Staff H. N.	307	7-15-31
B	"	6-30-31	Lucy S. Spaulding	" " "	309	7-15-31

WOOD GUARD POSTS

128+71	2
131+08	2



B.M. 12 Spike in roof 14" Elm 95' RH 121+97 Elev 693.60
 B.M. 13 Spike in trunk 12" Elm 25' RH 134+75 Elev 686.16

SERIES NO. 130-A
 SHEET 13 OF 74