

WOOD GUARD RAIL REQUIRED

CULVERT STATION	LEFT	RIGHT
80+00	24'	24'
73+66	24'	24'

CABLE GUARD RAIL REQUIRED

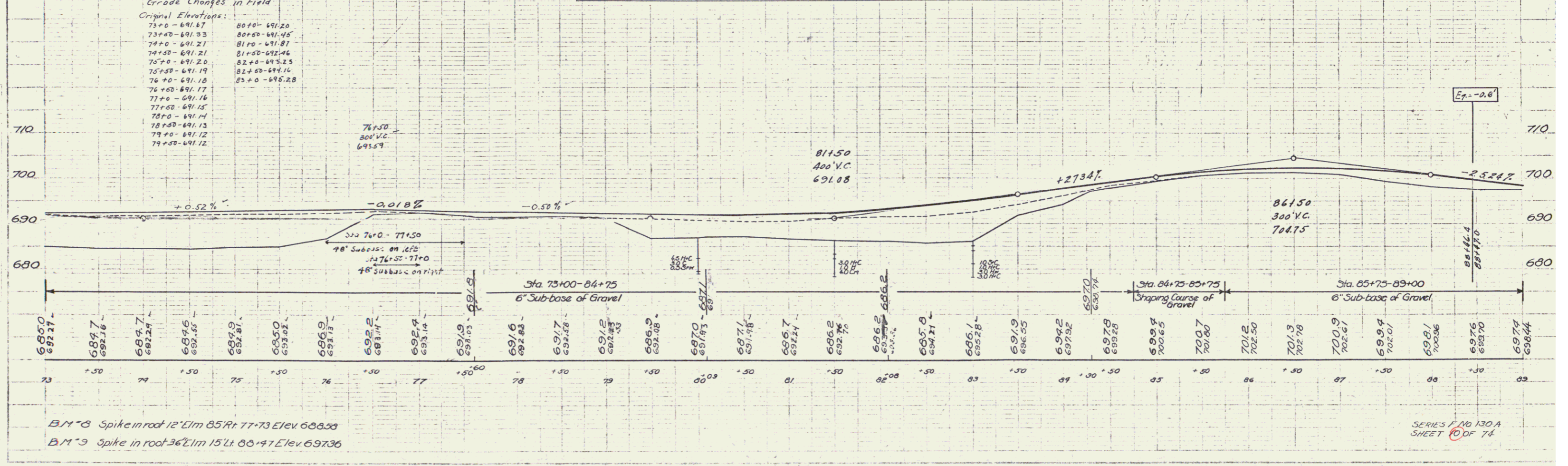
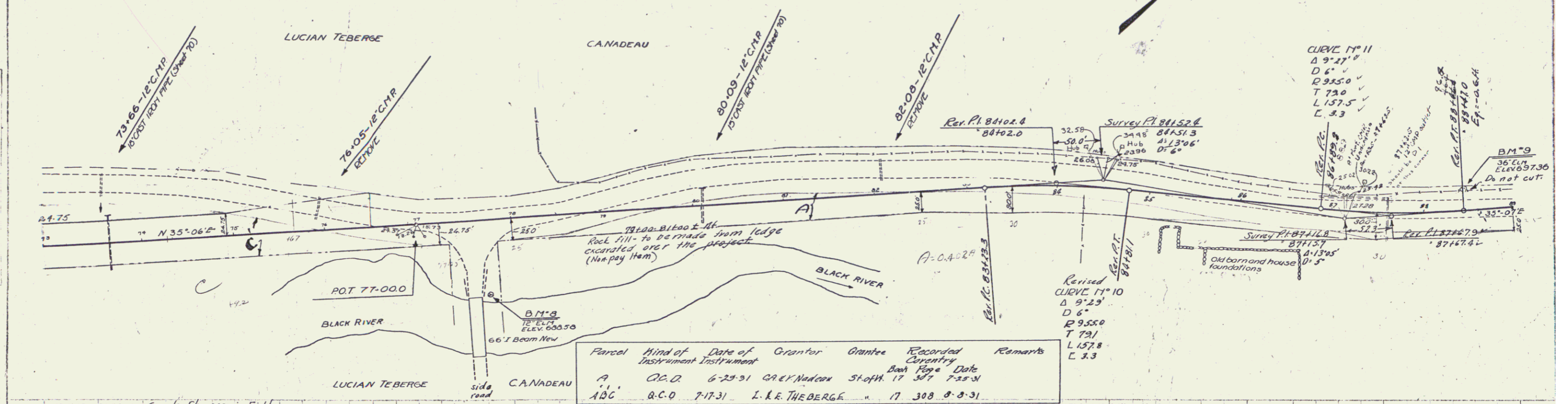
STATIONS	LENG	CONSTANT	PIV LENGTH
74+04-77+00	26'	40'	136'
83+54-84+20	26'	40'	136'
88+04-88+00	26'	40'	136'
88+28	24'	40'	134'

NEW CAST IRON PIPE CULVERTS REQUIRED

STATION	DIAM	LENG	CONCRETE	CONC	BRINE STEEL
73+66	18"	42'	13'	13'	13'
80+00	15"	42'	13'	13'	13'

Stations Unchanged
 84+88.5 - 87+62.5 20' 1" foot CMP
 87+62.5 - 91+00 47' 12" CMP

U.S. 1:25,000 STATE 1:25,000
 730A 1981 10 74



B.M. 8 Spike in root 12' Elm 85' Rt 77+73 Elev 688.33
 B.M. 9 Spike in root 36' Elm 15' Lt 86+47 Elev 697.36

SERIES No 130A
 SHEET 74 OF 74