

WOOD GUARD RAIL REQUIRED

CULVERT STATION	LEFT	RIGHT
40+63.3	-	24'

CRABLE GUARD RAIL REQUIRED

STATIONS	LOW	LENS	CONSTANT	RAIL LENGTH
38 58	57	228	40'	242'
40+63.3	74	241	40'	264'
37+27	44	241	40'	437'

NEW CAST IRON PIPE CULVERTS REQUIRED

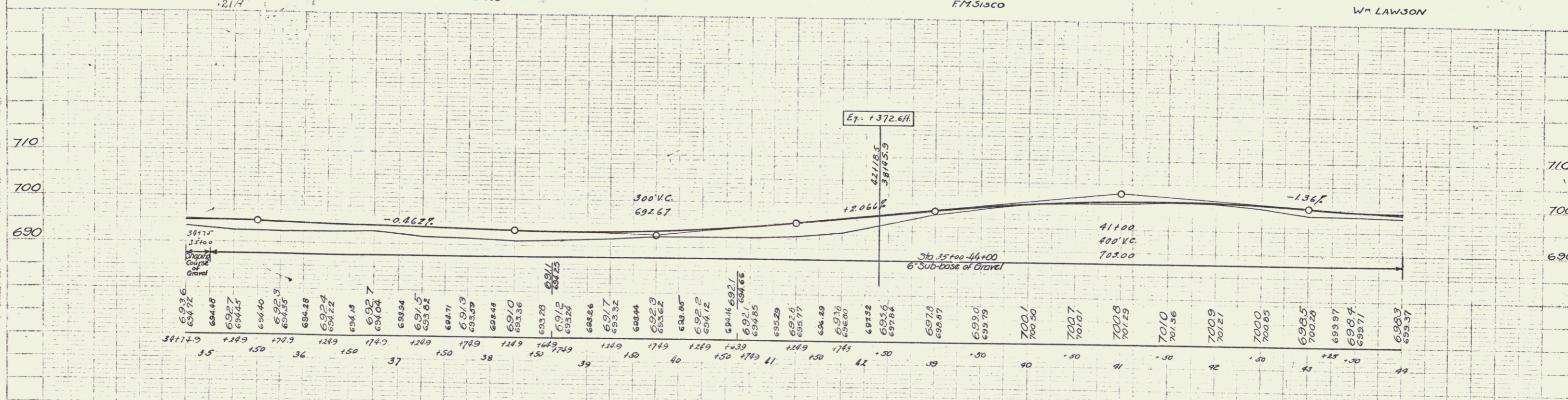
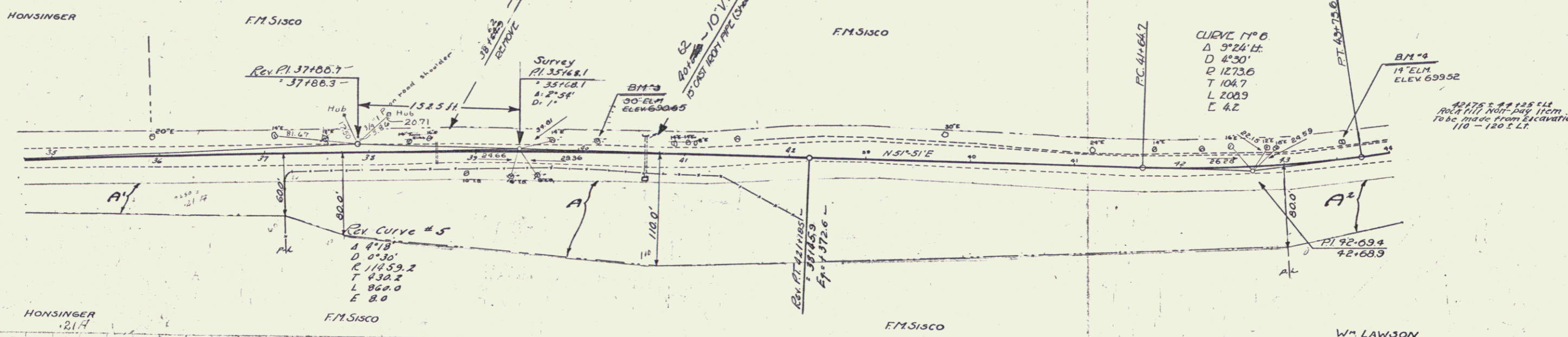
STATION	DIAM	LENG	CONC A	CONC C	PRIME STEEL
40+63.3	15"	42'	18" x 18"	18" x 18"	18" x 18"

DATE	BY	NO.	YEAR	TOTAL SHEETS
1/30/31	A	130-A	1931	74

Parcel	Kind of Instrument	Date of Instrument	Grantor	Grantee	Recorded	Remarks
A'	O.C.D.	6-12-31	H.M. & A.W. Honsinger	St of H.	17 234	6-12-31
A'	"	6-29-31	F.M. SISCO	"	17 301	7-25-31
A'	"	7-6-31	W. LAWSON	"	17 306	7-25-31

A. ADGE
A. ADGE

2 A. ADGE
2 A. ADGE



B.M. 3 Spike in root 30' Elm 82' 36-95 Elev 690.65
 B.M. 4 Spike in root 14' Elm 13.52' 43-57 Elev 699.52