

INDEX OF SHEETS

SHEET NO. 1. TITLE PAGE  
 2. CONSTRUCTION WARNING SIGNS  
 3. E-3 FEDERAL AID CONSTRUCTION IDENTIFICATION SIGNS  
 4. J-3 MINIMUM PLANTING DISTANCES  
 5. J-5 BRACING OF TREES  
 6. TYPICAL CROSS SECTION  
 7. CROSS SECTIONS  
 8. QUANTITY SHEET  
 9. PLAN SHEET  
 10. A Ground Section  
 11. B Final X-Section

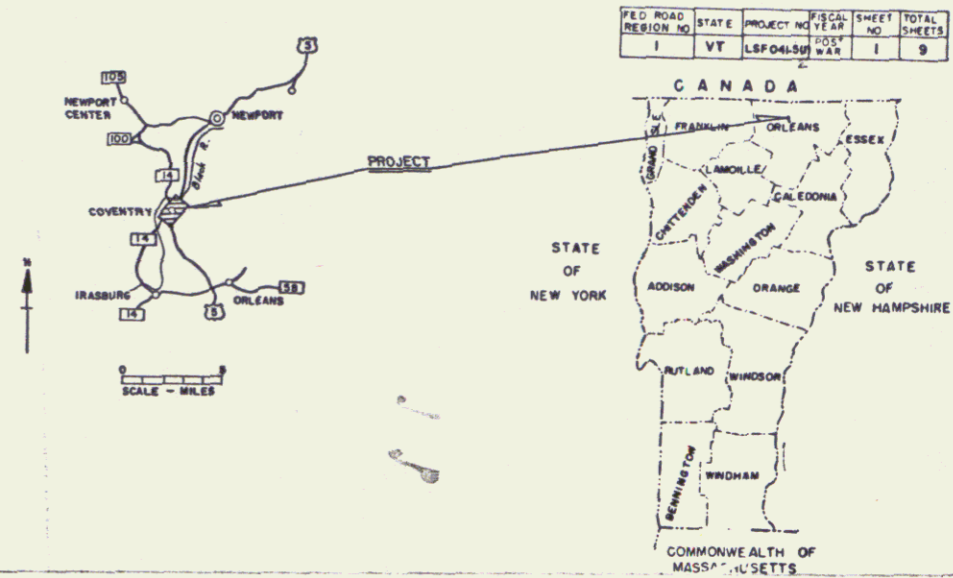
STATE OF VERMONT  
 DEPARTMENT OF HIGHWAYS

PROPOSED IMPROVEMENT

INTERSTATE LANDSCAPE PROJECT  
 TOWN OF COVENTRY  
 COUNTY OF ORLEANS  
 U.S. ROUTE 5 AND VT. ROUTE 14  
 ORLEANS-NEWPORT ROAD

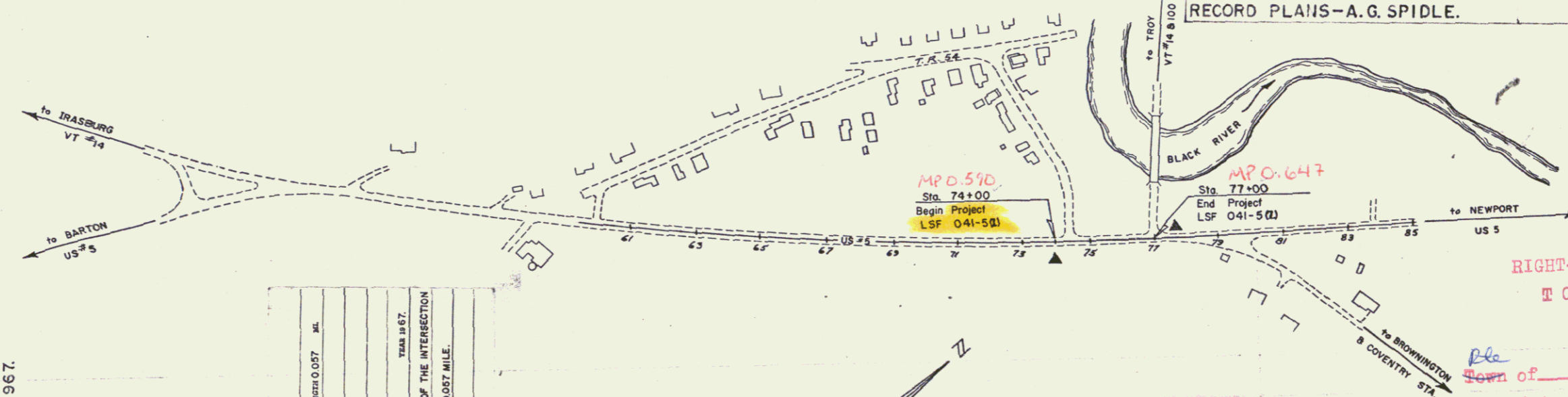
BEGINNING AT A POINT 0.057 MILE SOUTHERLY OF THE INTERSECTION OF RTE. US 5 & VT 14 AND EXTENDING NORTHERLY 0.057 MILE.

LENGTH OF PROJECT — 0.057 MILE



NOTE: THE SPECIFIC LOCATION OF EACH SHRUB AND TREE WILL BE MADE BY THE STATE LANDSCAPE ENGINEER IN THE FIELD PRIOR TO ANY PLANTING BEING PERFORMED BY THE CONTRACTOR. SUCH LOCATIONS WILL BE IN ACCORDANCE WITH THE 1959 "GUIDE FOR SHOWING ROADSIDE IMPROVEMENTS ON PROJECT PLANS," THE 1961 A.A.S.H.O. PUBLICATION "A POLICY ON LANDSCAPE DEVELOPMENT FOR THE NATIONAL SYSTEM OF INTERSTATE AND DEFENSE HIGHWAYS," AND ANY OTHER SUPPLEMENTARY LOCATION REQUIREMENTS WHICH ARE NOW OR MAY BECOME EFFECTIVE.

PROJECT NAME & NUMBER COVENTRY LSF 041-5(2)	TYPE REST AREA
RECORD PLANS MATERIALS	
SUBBASE OF GRAVEL—DEAN PIT — COVENTRY, VT. PLANT MIXED BASE COURSE & CONCRETE CLASS "B"—CALKINS SAND & GRAVEL CO.—COVENTRY, VT. REINFORCING STEEL—VERMONT STRUCTURAL STEEL CORP.—BURLINGTON, VT. ASPHALT—HUMBLE OIL—EVERETT, MASS. GALVANIZED CHAIN LINK FENCE—S.T. GRISWOLD & CO. INC.—WILLISTON, VT.	
CONTRACTOR—FABI & FILS LTD. SHERBROOKE, QUE.	CONTRACT DATED—MARCH 3, 1967. STARTED—MAY 23, 1967.
PES. ENGINEER—HERBERT J. WASHER	COMPLETED—OCT. 11, 1967.
RECORD PLANS—A.G. SPIDLE.	ACCEPTED—OCT. 11, 1967.



CONVENTIONAL SIGNS

COUNTY LINE	.....	GROUND ELEVATION	.....
TOWN LINE	.....	GRADE ELEVATION	.....
FENCE LINE	.....	CURVE DATA	.....
STONE WALL	.....	DEFLECTION OF ANGLE	.....
UNFENCED PROPERTY	.....	DEGREE OF CURVE	.....
GUARD RAIL	.....	RADIUS OF CURVE	.....
TRAVELED WAY	.....	TANGENT DISTANCE	.....
RAILROAD	.....	LENGTH OF CURVE	.....
RETAINING WALL	.....	EXTERNAL DISTANCE	.....
CENTER LINE	.....	POINT OF INTERSECTION	.....
SURVEY LINE	.....	POINT OF CURVE	.....
CULVERT	.....	POINT OF TANGENT	.....
DROP INLET	.....	POINT ON TANGENT	.....
TROLLEY POLE	.....	POINT ON SUB-TANGENT	.....
POWER POLE	.....		
TELEPHONE POLE	.....		
TREES	.....		
HEDGE	.....		

PROJECT COVENTRY  
 NUMBER LSF 041-5(2)  
 TITLE REST AREA

CONTRACTOR FABI & FILS LTD.  
 SHERBROOKE, QUE.

LOCATION BEGINNING AT A POINT 0.057 MILE SOUTHERLY OF THE INTERSECTION OF RTE. US 5 & VT 14 AND EXTENDING NORTHERLY 0.057 MILE.

IN SIGNS

200'	APPROVED [Signature]
300'	APPROVED [Signature]

THESE PLANS ARE SUBJECT TO SUCH REVISIONS AS MAY BE REQUIRED BY THE BUREAU OF PUBLIC ROADS OR THE COMMISSIONER OF HIGHWAYS.

CONSTRUCTION IS TO BE CARRIED ON IN ACCORDANCE WITH THESE PLANS AND THE STANDARD SPECIFICATIONS FOR HIGHWAY AND BRIDGE CONSTRUCTION DATED APRIL, 1964, AS APPROVED BY THE BUREAU OF PUBLIC ROADS ON OCTOBER 12, 1964, INCLUDING ALL SUBSEQUENT APPROVED REVISIONS AND SUCH REVISED SPECIFICATIONS AND SPECIAL PROVISIONS AS ARE INCORPORATED IN THESE PLANS.

RIGHT-OF-WAY DIVISION  
 TOWN FILE  
 PERPETUAL  
 Town of 055  
 (To Be Returned To R.O.W. Division)

APPROVED [Signature] LANDSCAPE ENGINEER DATE 12/15/66	APPROVED [Signature] CONSTRUCTION ENGINEER DATE 1/10/67	APPROVED [Signature] ROADSIDE DEVELOPMENT ENGINEER DATE 1/19/67	APPROVED [Signature] DISTRICT ENGINEER DATE 10 Jan 1967	APPROVED [Signature] ASST. CHIEF ENGINEER DATE 1/10/67	APPROVED [Signature] CHIEF ENGINEER DATE 1/14/67
---	---	---	---	--	--

DEPARTMENT OF COMMERCE  
 BUREAU OF PUBLIC ROADS

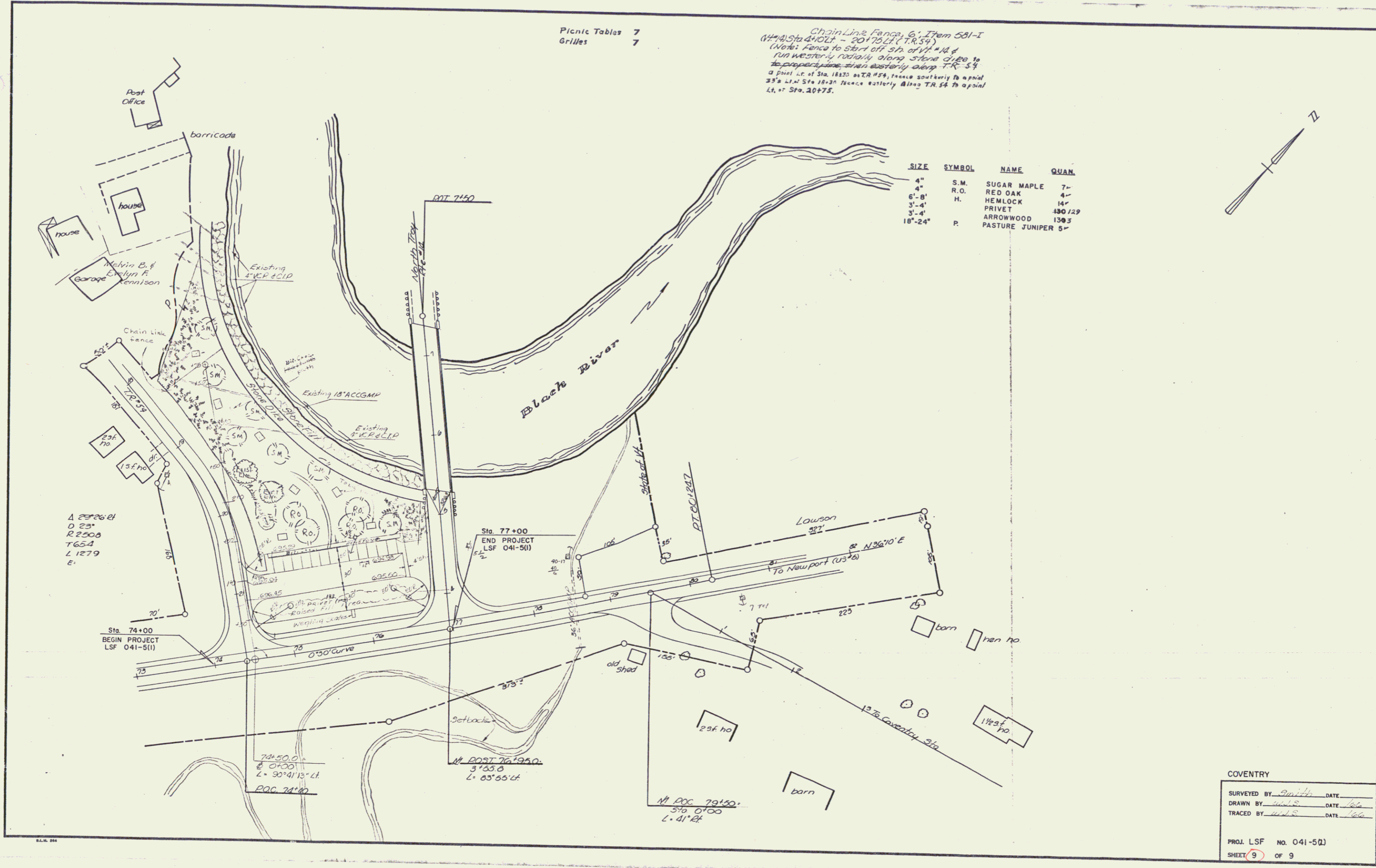
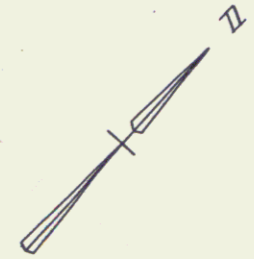
APPROVED \_\_\_\_\_  
 DIVISION ENGINEER DATE \_\_\_\_\_

PROJECT LSF No. 041-5(1)  
 SHEET 1 OF 9 SHEETS

Picnic Tables 7  
Grilles 7

Chain Link Fence 6' Item 581-I  
(HMA) Sta 4+10 LT - 20+75 LT (T.R. 54)  
(Note: Fence to start off 5 ft. off V.I. & run westerly radially along stone dike to the property line, then easterly along T.R. 54 a part of Sta. 18+20 to TR 129, thence southerly to a point 25' S. of Sta. 18+20 thence easterly along TR 54 to a point LT. at Sta. 20+75.

SIZE	SYMBOL	NAME	QUAN.
4"	S.M.	SUGAR MAPLE	7-
4"	R.O.	RED OAK	4-
6'-8"	H.	HEMLOCK	14-
3'-4"	P.	PRIVET	130/29
3'-4"		ARROWWOOD	130/3
18'-24"		PASTURE JUNIPER	5-



A 2826.41  
D 23'  
R 250.8  
T 65.4  
L 127.9  
E.

Sta. 74+00  
BEGIN PROJECT  
LSF 041-5(1)

Sta. 77+00  
END PROJECT  
LSF 041-5(1)

74+50.0  
S 0°00'  
L 90°41'13" Lt

N. POST 76+95.0  
3°55.8  
L 65°55' Lt

N. POC 79+50.  
5°0'00  
L 41' Lt

COVENTRY

SURVEYED BY Smith DATE \_\_\_\_\_  
 DRAWN BY WLS DATE 6/66  
 TRACED BY WLS DATE 6/66

PROJ. LSF NO. 041-5(1)  
 SHEET 9 OF 9