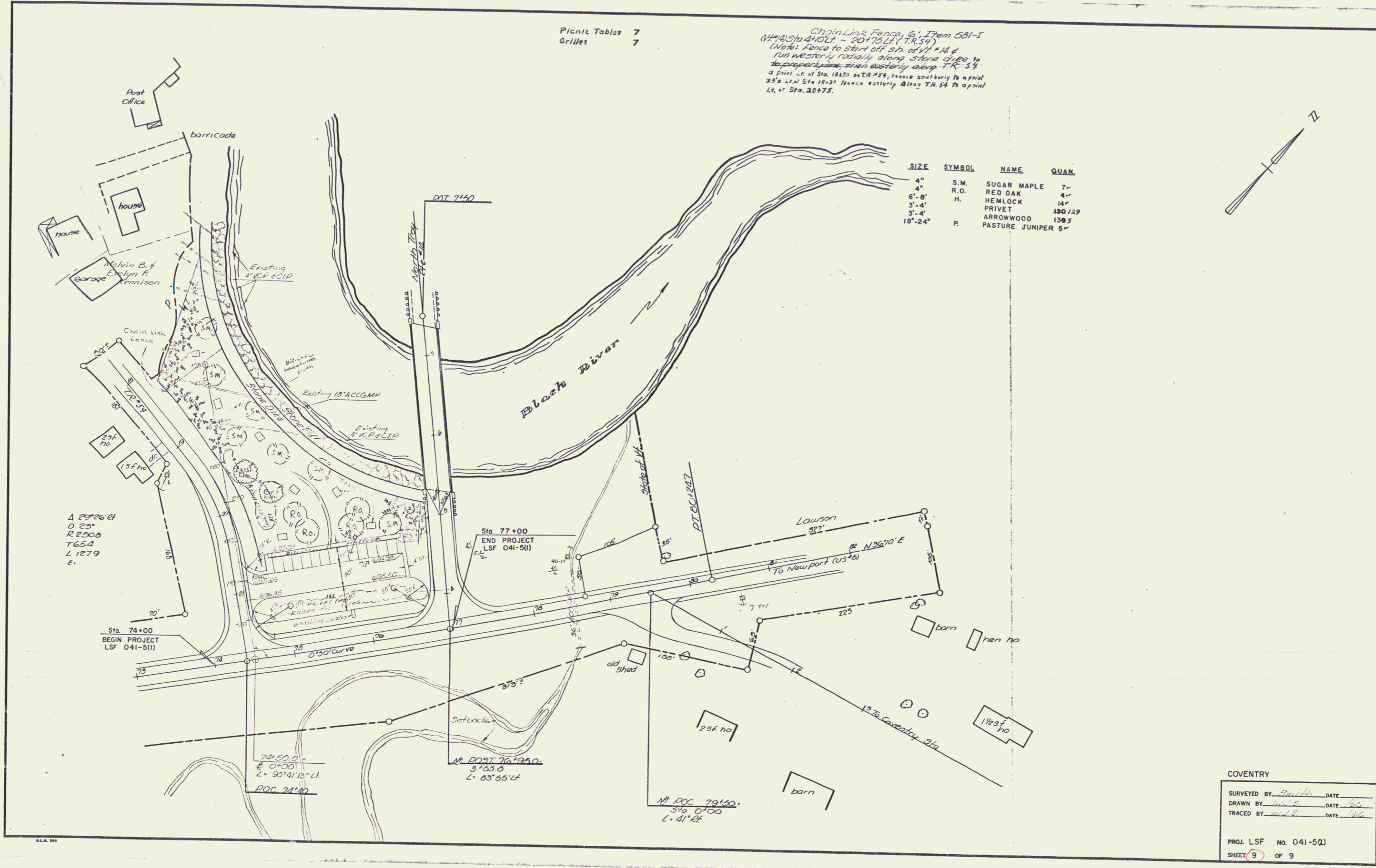
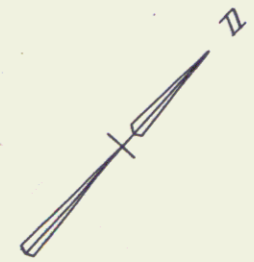


Picnic Tables 7  
Grilles 7

Chain Link Fence 6' Item 581-I  
(HMA) Sta 4+10 LT - 20+75 LT (T.R. 54)  
(Note: Fence to start off 5' ft of Vt. #12 &  
run westerly radially along stone dike to  
the property line, then easterly along T.R. 54  
a part of Sta. 18+20 to TR #29, thence southerly to a point  
25' S. of Sta. 18+20 thence easterly along TR. 54 to a point  
LT. at Sta. 20+75.

SIZE	SYMBOL	NAME	QUAN.
4"	S.M.	SUGAR MAPLE	7-
4"	R.O.	RED OAK	4-
6'-8"	H.	HEMLOCK	14-
3'-4"	P.	PRIVET	130/29
3'-4"		ARROWWOOD	130/3
18'-24"		PASTURE JUNIPER	5-



A 2826 ft  
O 23'  
R 2508  
T 654  
L 1279  
E.

Sta. 74+00  
BEGIN PROJECT  
LSF 041-5(1)

Sta. 77+00  
END PROJECT  
LSF 041-5(1)

74+50.0  
S 0°00'  
L 90°41'13" Lt  
POC 74+00

N POST 76+95.0  
3'55.0  
L 65°55' Lt

N POC 79+50.  
5'0.0  
L 41' Lt

COVENTRY

SURVEYED BY Smith DATE \_\_\_\_\_  
DRAWN BY WLS DATE 6/66  
TRACED BY WLS DATE 6/66

PROJ. LSF NO. 041-5(1)  
SHEET 9 OF 9