

INDEX OF SHEETS

SHEET NO. 1	TITLE PAGE
2	CONSTRUCTION WARNING SIGNS
3	E-3 FEDERAL AID CONSTRUCTION IDENTIFICATION SIGNS
4	J-3 MINIMUM PLANTING DISTANCES
5	J-5 BRACING OF TREES
6	TYPICAL CROSS SECTION
7	CROSS SECTIONS
8	QUANTITY SHEET
9	PLAN SHEET
6A	Grading Barron
6B	Final X-Section

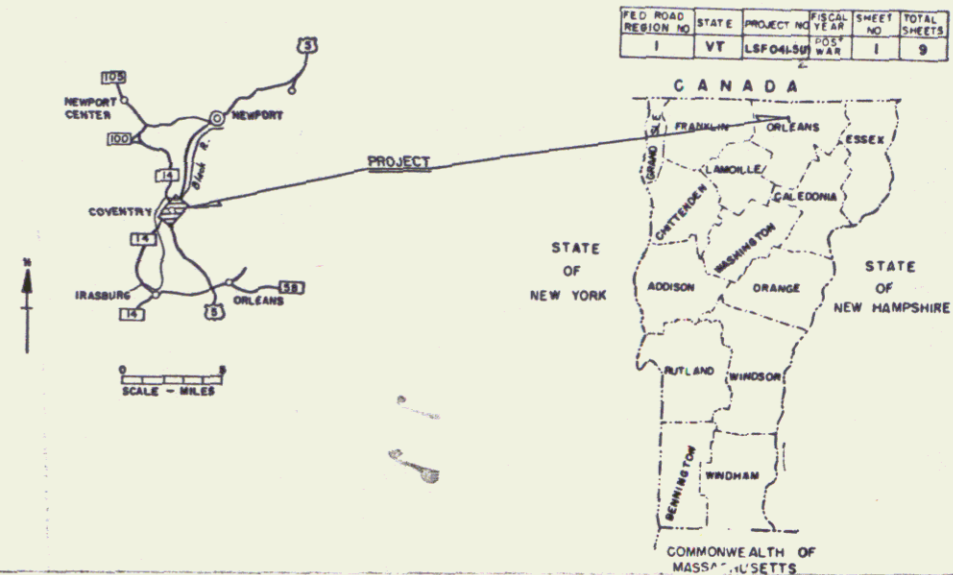
STATE OF VERMONT
DEPARTMENT OF HIGHWAYS

PROPOSED IMPROVEMENT

INTERSTATE LANDSCAPE PROJECT
TOWN OF COVENTRY
COUNTY OF ORLEANS
U.S. ROUTE 5 AND VT. ROUTE 14
ORLEANS-NEWPORT ROAD

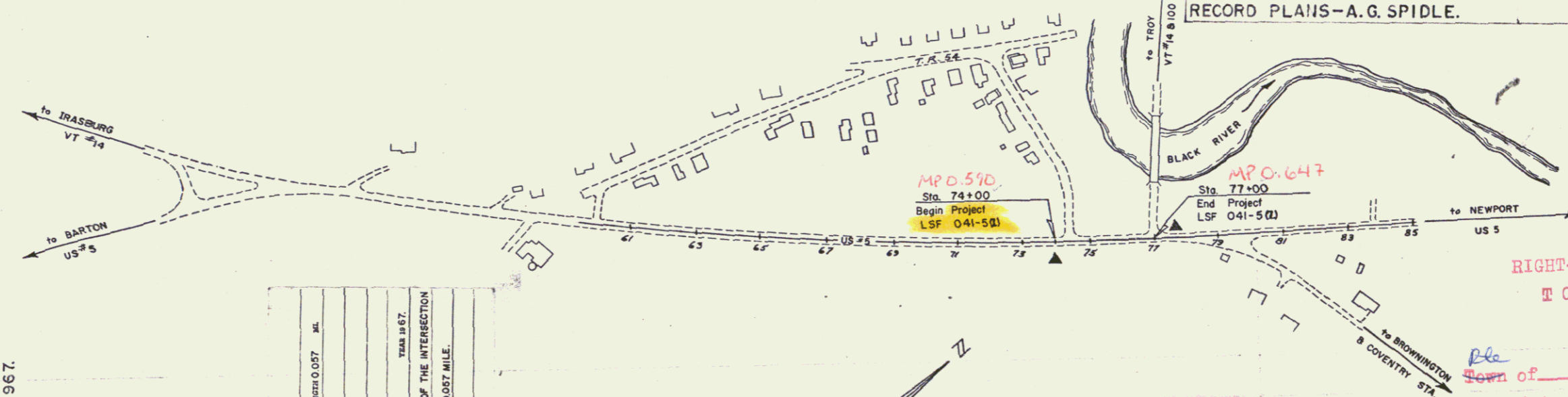
BEGINNING AT A POINT 0.057 MILE SOUTHERLY OF THE INTERSECTION OF RTE. US 5 & VT 14 AND EXTENDING NORTHERLY 0.057 MILE.

LENGTH OF PROJECT — 0.057 MILE



NOTE: THE SPECIFIC LOCATION OF EACH SHRUB AND TREE WILL BE MADE BY THE STATE LANDSCAPE ENGINEER IN THE FIELD PRIOR TO ANY PLANTING BEING PERFORMED BY THE CONTRACTOR. SUCH LOCATIONS WILL BE IN ACCORDANCE WITH THE 1959 "GUIDE FOR SHOWING ROADSIDE IMPROVEMENTS ON PROJECT PLANS," THE 1961 A.A.S.H.O. PUBLICATION "A POLICY ON LANDSCAPE DEVELOPMENT FOR THE NATIONAL SYSTEM OF INTERSTATE AND DEFENSE HIGHWAYS," AND ANY OTHER SUPPLEMENTARY LOCATION REQUIREMENTS WHICH ARE NOW OR MAY BECOME EFFECTIVE.

PROJECT NAME & NUMBER	TYPE
COVENTRY LSF 041-5(2)	REST AREA
RECORD PLANS	
MATERIALS	
SUBBASE OF GRAVEL—DEAN PIT — COVENTRY, VT.	
PLANT MIXED BASE COURSE & CONCRETE CLASS "B"—CALKINS SAND & GRAVEL CO.—COVENTRY, VT.	
REINFORCING STEEL—VERMONT STRUCTURAL STEEL CORP.—BURLINGTON, VT.	
ASPHALT—HUMBLE OIL—EVERETT, MASS.	
GALVANIZED CHAIN LINK FENCE—S.T. GRISWOLD & CO. INC.—WILLISTON, VT.	
CONTRACTOR—FABI & FILS LTD.	CONTRACT DATED—MARCH 3, 1967.
SHERBROOKE, QUE.	STARTED—MAY 23, 1967.
PES. ENGINEER—HERBERT J. WASHER	COMPLETED—OCT. 11, 1967.
RECORD PLANS—A.G. SPIDLE.	ACCEPTED—OCT. 11, 1967.



CONVENTIONAL SIGNS

COUNTY LINE	---
TOWN LINE	---
FENCE LINE	---
STONE WALL	---
UNFENCED PROPERTY	---
GUARD RAIL	---
TRAVELED WAY	---
RAILROAD	---
RETAINING WALL	---
CENTER LINE	---
SURVEY LINE	---
CULVERT	---
DROP INLET	---
TROLLEY POLE	---
POWER POLE	---
TELEPHONE POLE	---
TREES	---
HEDGE	---

PROJECT COVENTRY
TOWN LSF 041-5(2)
SITE REST AREA

CONTRACTOR FABI & FILS LTD.
SHERBROOKE, QUE.

LOCATION BEGINNING AT A POINT 0.057 MILE SOUTHERLY OF THE INTERSECTION OF RTE. US 5 & VT 14 AND EXTENDING NORTHERLY 0.057 MILE.

IN SIGNS

200'	▲
300'	▲

THESE PLANS ARE SUBJECT TO SUCH REVISIONS AS MAY BE REQUIRED BY THE BUREAU OF PUBLIC ROADS OR THE COMMISSIONER OF HIGHWAYS.

CONSTRUCTION IS TO BE CARRIED ON IN ACCORDANCE WITH THESE PLANS AND THE STANDARD SPECIFICATIONS FOR HIGHWAY AND BRIDGE CONSTRUCTION DATED APRIL, 1964, AS APPROVED BY THE BUREAU OF PUBLIC ROADS ON OCTOBER 12, 1964, INCLUDING ALL SUBSEQUENT APPROVED REVISIONS AND SUCH REVISED SPECIFICATIONS AND SPECIAL PROVISIONS AS ARE INCORPORATED IN THESE PLANS.

RIGHT-OF-WAY DIVISION
TOWN FILE
PERPETUAL
Town of 055
(To Be Returned To R.O.W. Division)

APPROVED <i>[Signature]</i> LANDSCAPE ENGINEER DATE 12/15/66	APPROVED <i>[Signature]</i> CONSTRUCTION ENGINEER DATE 1/10/67	APPROVED <i>[Signature]</i> ROADSIDE DEVELOPMENT ENGINEER DATE 1/19/67	APPROVED <i>[Signature]</i> DISTRICT ENGINEER DATE 10 Jan 1967	APPROVED <i>[Signature]</i> ASST. CHIEF ENGINEER DATE 1/10/67	APPROVED <i>[Signature]</i> CHIEF ENGINEER DATE 1/14/67
--	--	--	--	---	---

DEPARTMENT OF COMMERCE
BUREAU OF PUBLIC ROADS

APPROVED

DIVISION ENGINEER DATE

PROJECT LSF No. 041-5(1)

SHEET 1 OF 9 SHEETS