

Excavation & Removal of Road Surface On Roadways
 Item 113-A
 57+00 - 60+152 L.

DRIVES
 57+16 R.L.
 61+95 R.L.
 63+35 L.L.

Steel Marker Posts
 60+00 Lt 1
 60+70 Lt 2
 72+01 URM 2

SPECIAL DITCH - ITEM 103-A
 72+00 - 73+00 R.V.
 71+00

Steel Guide Posts
 60+70 Lt 1

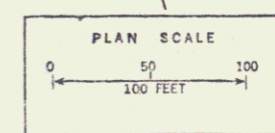
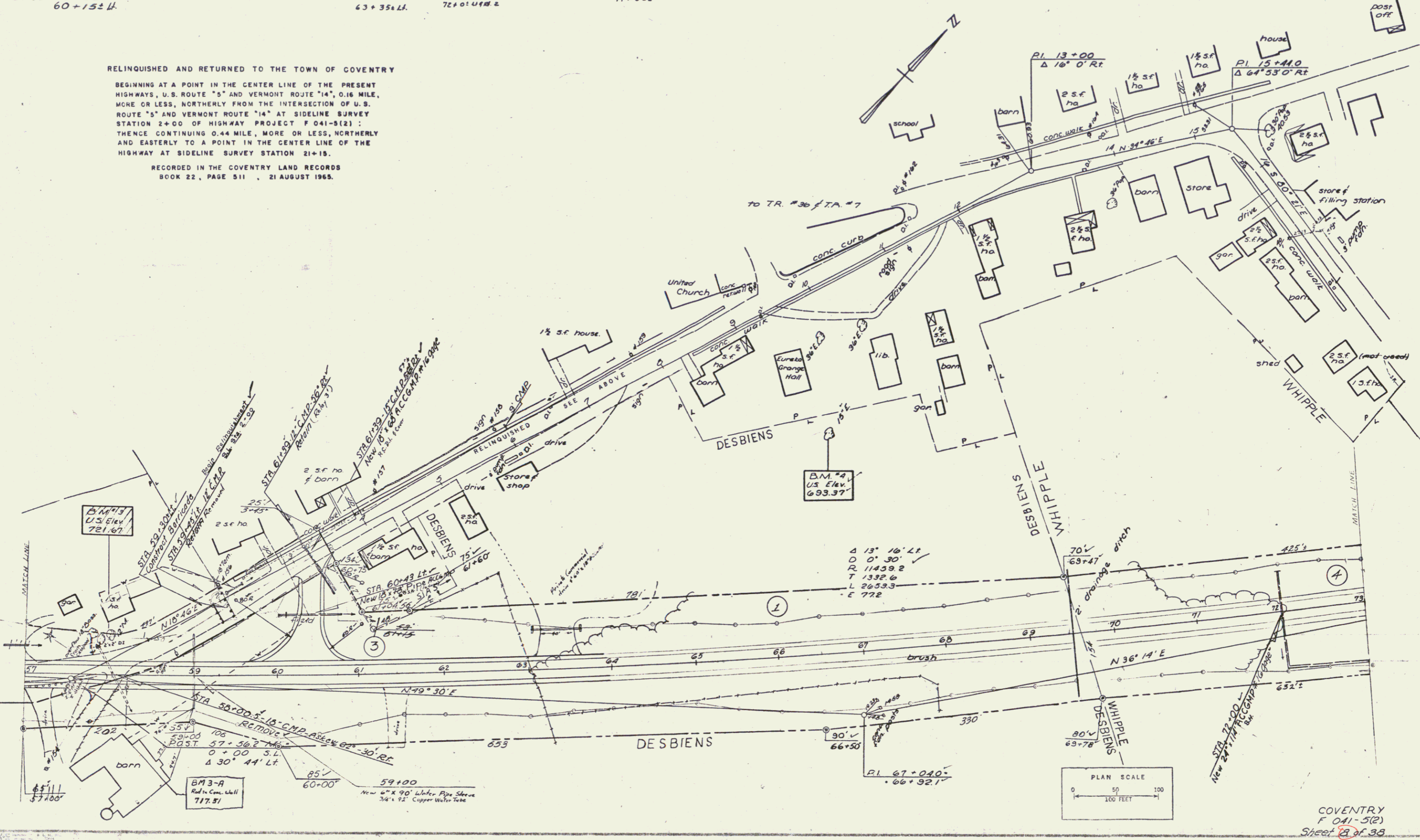
Approach
 60+93.4

RELINQUISHED AND RETURNED TO THE TOWN OF COVENTRY

BEGINNING AT A POINT IN THE CENTER LINE OF THE PRESENT HIGHWAYS, U.S. ROUTE "5" AND VERMONT ROUTE "14", 0.16 MILE, MORE OR LESS, NORTHERLY FROM THE INTERSECTION OF U.S. ROUTE "5" AND VERMONT ROUTE "14" AT SIDELINE SURVEY STATION 2+00 OF HIGHWAY PROJECT F 041-5(2); THENCE CONTINUING 0.44 MILE, MORE OR LESS, NORTHERLY AND EASTERLY TO A POINT IN THE CENTER LINE OF THE HIGHWAY AT SIDELINE SURVEY STATION 21+15.

RECORDED IN THE COVENTRY LAND RECORDS
 BOOK 22, PAGE 511 . 21 AUGUST 1965.

PLAN	DATE	BY
REVISED		
REVISIONS		
NO.	DATE	BY
1		
2		
3		



COVENTRY
 F 041-5(2)
 Sheet 23 of 38