

INDEX OF SHEETS

SHEET NO.	TITLE PAGE
1	TITLE PAGE
2	TYPICAL CROSS-SECTION OF IMPROVEMENT (GRADINGS, BASE & DRAINAGE WITH DOUBLE TACK COAT OF REFINED TAR-ITEM 29)
3	BANKING AND WIDENING TABLES
4-9	PLAN AND PROFILE SHEETS
10	STANDARD STRUCTURE SHEET 3-20; PIPE CULVERTS
11	" " " " 3-29; DO. CULVERTS
12	" " " " 3-30; GUL. 20 RAIL
13	" " " " 3-31; DOUL. JARY MARKERS
14	" " " " 3-40; BARR. CABLES, SIGNS & LIGHTS
15-16	DETAILS OF 4' x 6' R.C. BOX STR. 557 - 12
17-40	CROSS-SECTIONS

Standard Structure Sheets approved by the Chief Engineer.

529	July 11, 1933
529	July 11, 1933
530	Aug 15, 1934
531	July 25, 1934

FED. ROAD DIST. NO.	STATE	FED. AID PROJ. NO.	FISCAL YEAR	SHEET NO.	TOTAL SHEETS
9	VT.	6027	1938	1	40

STATE OF VERMONT
STATE HIGHWAY DEPARTMENT

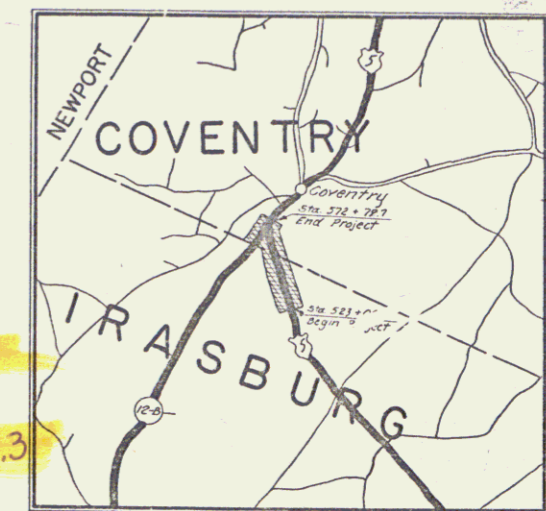
PLAN AND PROFILE OF PROPOSED
STATE HIGHWAY
FEDERAL AID PROJECT

TOWNS OF IRASBURG & COVENTRY

BARTON-NEWPORT ROAD

BEGINNING AT A POINT 4239.4 FT. SOUTH OF THE IRASBURG-COVENTRY TOWN LINE AND EXTENDING NORTHERLY 0.942 MILES TO A POINT 737.2 FT. NORTH OF THE IRASBURG-COVENTRY TOWN LINE.

Route: US 5
Project: FAP 96.3



Pin# 99R279

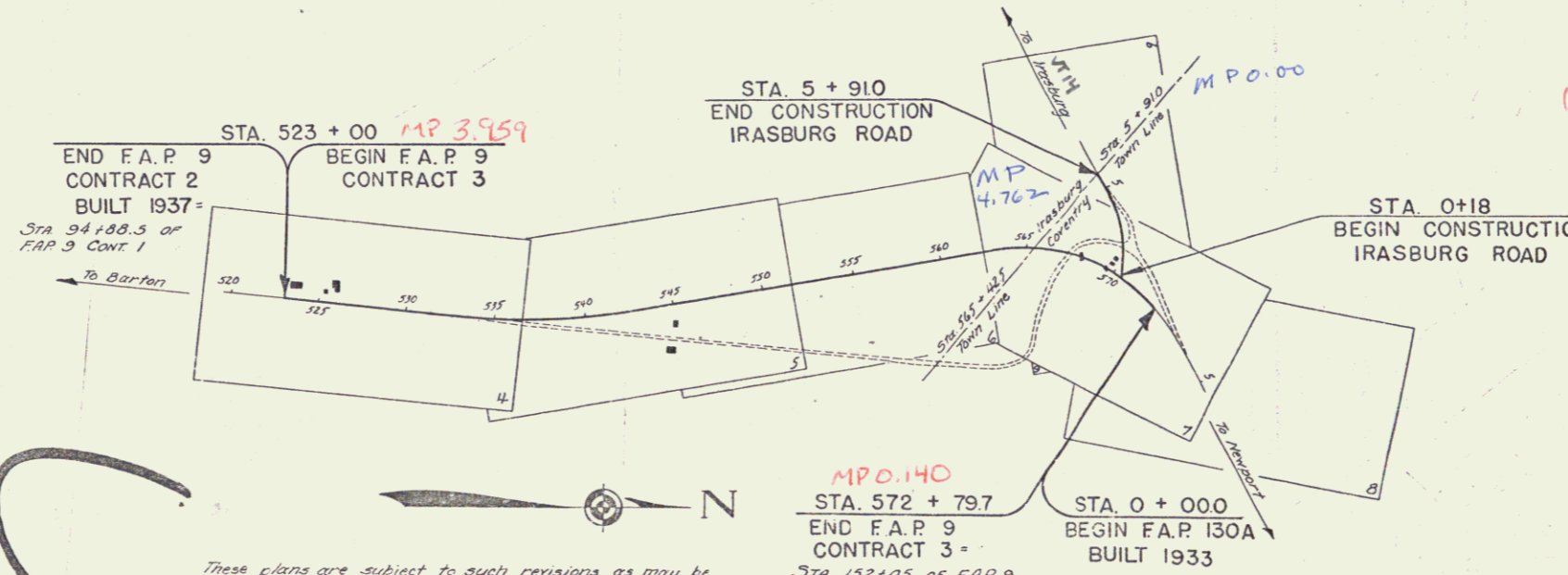
LENGTH OF PROJECT 4976.6 FEET = 0.942 MILES

RIGHT-OF-WAY DIVISION
TOWN FILE

PERPETUAL

Town of US 5
(To Be Returned To R.O.W. Division)

APPROVED: June 18, 1937
H. Edgerton
COMMISSIONER OF HIGHWAYS
SUBMITTED BY ORDER OF THE STATE HIGHWAY BOARD



CONVENTIONAL SIGNS

COUNTY LINE
TOWN LINE
FENCE LINE
STONE WALL
UNFENCED PROPERTY
GUARD RAIL
TRAVELED WAY
RAILROAD
RETAINING WALL
CENTER LINE
SURVEY LINE
CULVERT
DROP INLET
TROLLEY POLE
POWER POLE
TELEPHONE POLE
TREES
HEDGE

GROUND ELEVATION		GRADE ELEVATION	
BATHY	LINE	BATHY	LINE
.....

CURVE DATA	
DEFLECTION ANGLE
DEGREE OF CURVE
RADIUS OF CURVE
TANGENT DISTANCE
LENGTH OF CURVE
EXTERNAL DISTANCE
POINT OF INTERSECTION
POINT OF CURVE
POINT OF TANGENT
POINT ON TANGENT

These plans are subject to such revisions as may be required by the Bureau of Public Roads or the Commissioner of Highways.
Construction is to be carried on in accordance with the plans and Standard Road & Bridge Specifications of 1936, as approved December 29, 1936, by the Bureau of Public Roads, including all subsequent approved revisions and such revised specifications and special provisions as are submitted with the plans.

M.P.O. 140
STA. 572 + 79.7
END F.A.P. 9
CONTRACT 3
STA. 152+05 of F.A.P. 9
CONT. 1

SCALES

TITLE	1" = 500'
TYPICAL	1" = 2'
PLAN	1" = 50'
PROFILE	1" = 50'
SECTION	1" = 10'
CROSS-SECTIONS	1" = 2'

APPROVED: June 14, 1937
C. O. [Signature]
DISTRICT HIGHWAY COMMISSIONER

CORRECT: June 10, 1937
[Signature]
ROAD ENGINEER

SERIES FA PNO. 3 (cont) FILED
SHEET 1 OF 40