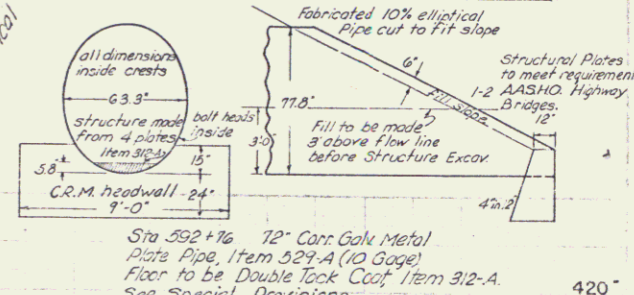
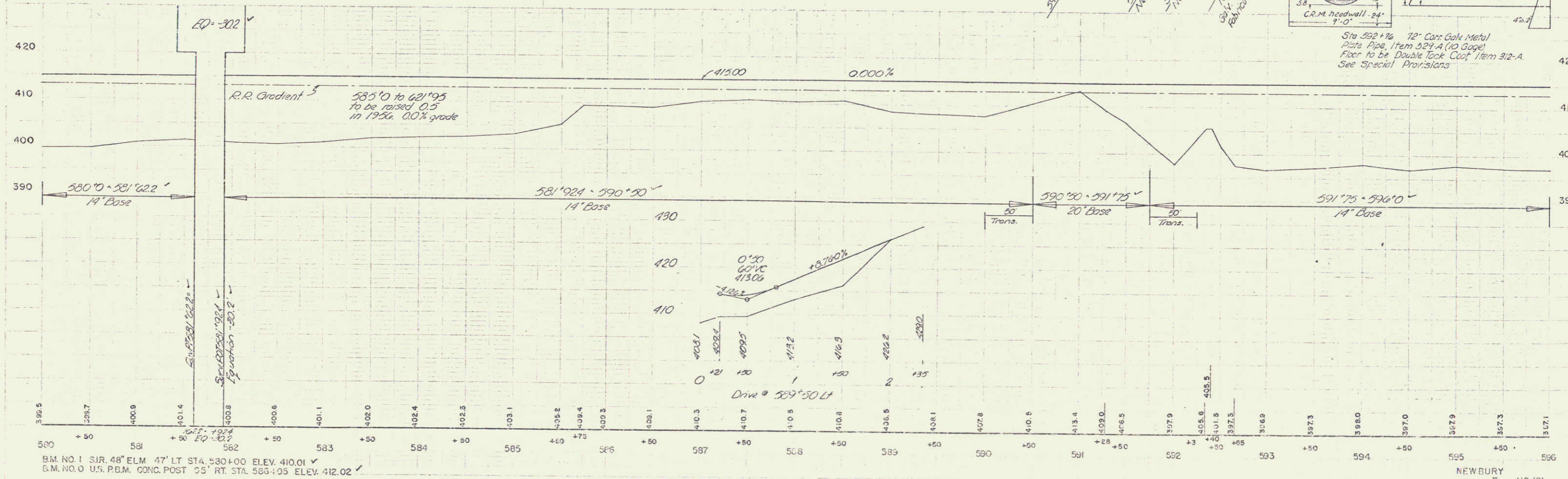


THE FOLLOWING SECTION OF U.S. RT. 5 IS RELINQUISHED AS INDICATED BELOW:
 BEGINNING 70' LT STA 580+0 AND EXTENDING NORTHEASTERLY 0.54 MILES TO A POINT 66' LT STA 608+0
 RELINQUISHED TO THE TOWN OF NEWBURY, RECORDED BOOK 2, PAGE 5, OF HIGHWAY RECORDS, OF THE TOWN OF NEWBURY ON THE 23rd DAY OF SEPT 1958

#4-A LIONEL E. & HAZEL I. LEDGER (A.5.44) STA 585+85 - 602+65
 SLOPE RIGHTS - STA 590+00 - 592+00
 APPROACH ROAD - STA 589+50
 CULVERT RIGHTS - STA 592+26+
 CHANNEL CHANGE - STA 592+50 - 602+30+
 COND 3/27/58
 RECORDED - NEWBURY - BK 46 - PG 235/248 - 3/23/58



BM. NO. 1 S.R. 48" ELM. 47' LT STA. 530+00 ELEV. 410.01
 B.M. NO. 0 U.S. P.B.M. CONC. POST 25' RT. STA. 586+05 ELEV. 412.02

NEWBURY
 PROJECT NO 112 (8)
 SHEET 14 OF 110

6