

Removal of Present Road Surface Item 118
549+00-565+75 Lt

Δ 15' 51" Lt
D 1"
R 5720.7
T 797.6
L 1283.0
E 53.2
Bank 3/4 per ft

HARLEY W & MERYL G LEARNED & STELLA C. LEARNED Plant Guard Rail

STEEL GUIDE POSTS
560+02-560+50 Lt

3 CABLE GUARD RAIL
LT. 549+0-550+44
RT. 548+34-552+02
555+11-556+07
555+53-560+17
563+96-564+0

Three Cable Guard Rail w/ Steel Posts
Lt

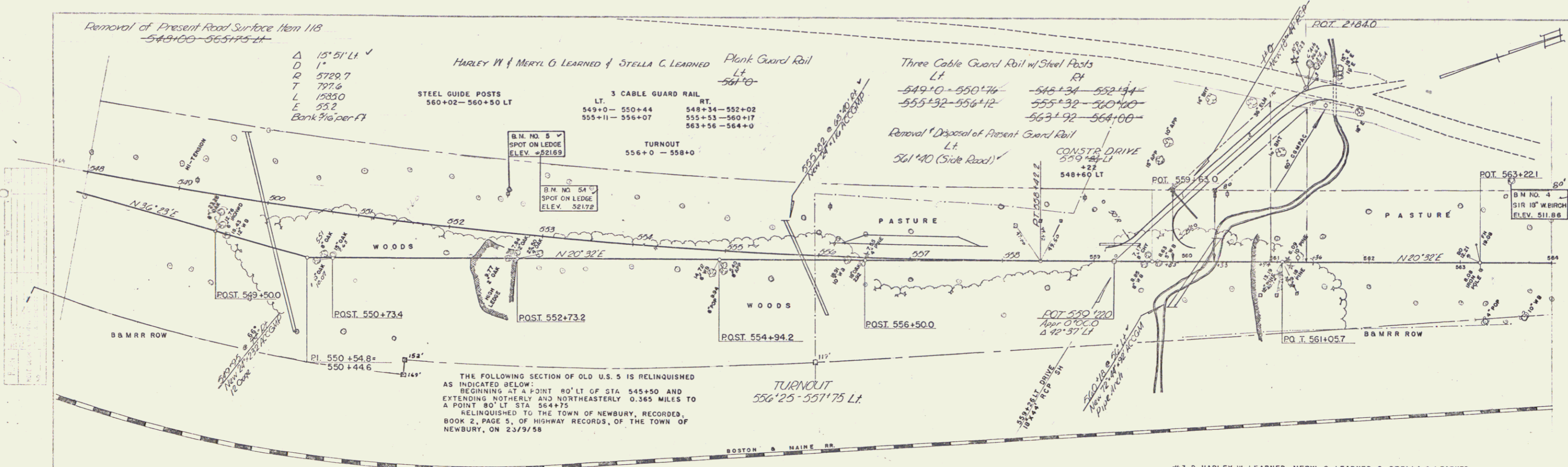
549+0-550+74
555+32-556+12
548+34-552+44
555+32-560+10
563+92-564+00

Removal & Disposal of Present Guard Rail
Lt

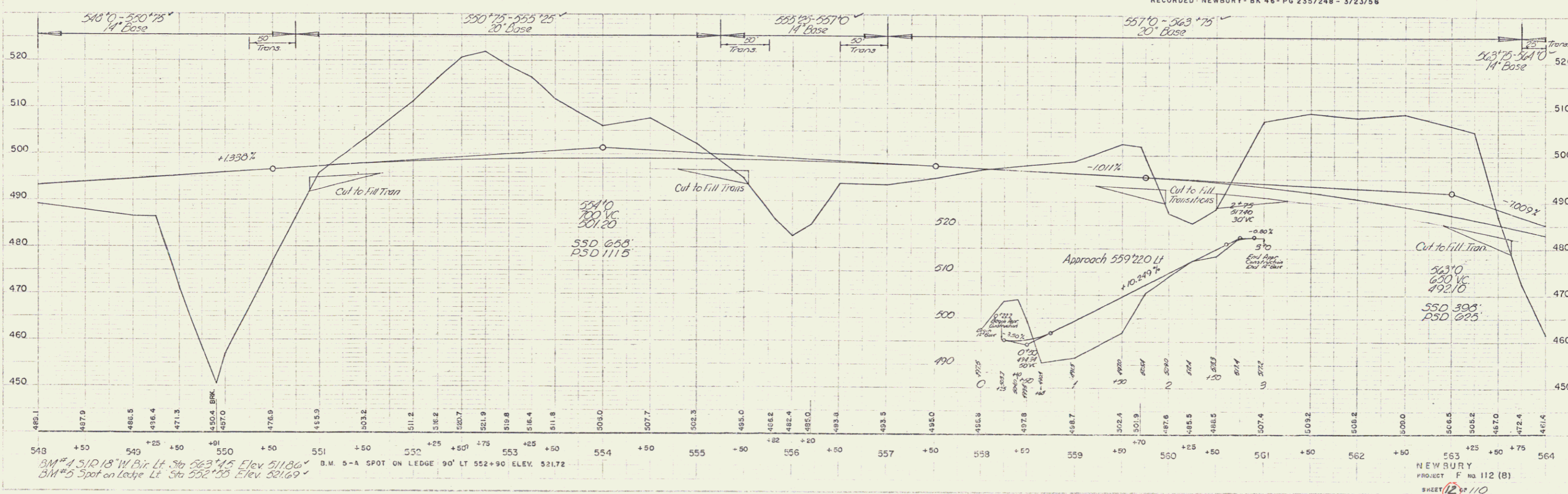
561+40 (Side Road)

CONSTR. DRIVE
559+20 Lt

548+60 Lt



3-D HARLEY W. LEARNED, MERYL G. LEARNED, & STELLA C. LEARNED
(A 0.172) STA 559+85-561+36 ±
C.O.D. 3/23/58
RECORDED NEWBURY - BK 46 - PG 235/248 - 3/23/58



BM # 1 3/4" 18" W. Birch Lt. Sta 563+45 Elev 511.86
BM # 5 Spot on Ledge Lt. Sta 552+55 Elev 521.69

NEWBURY
PROJECT F NO 112 (8)
SHEET 12 OF 110