

Three Cable Guard Rail With Steel Posts  
 Rt  
~~524+12 - 530+36~~

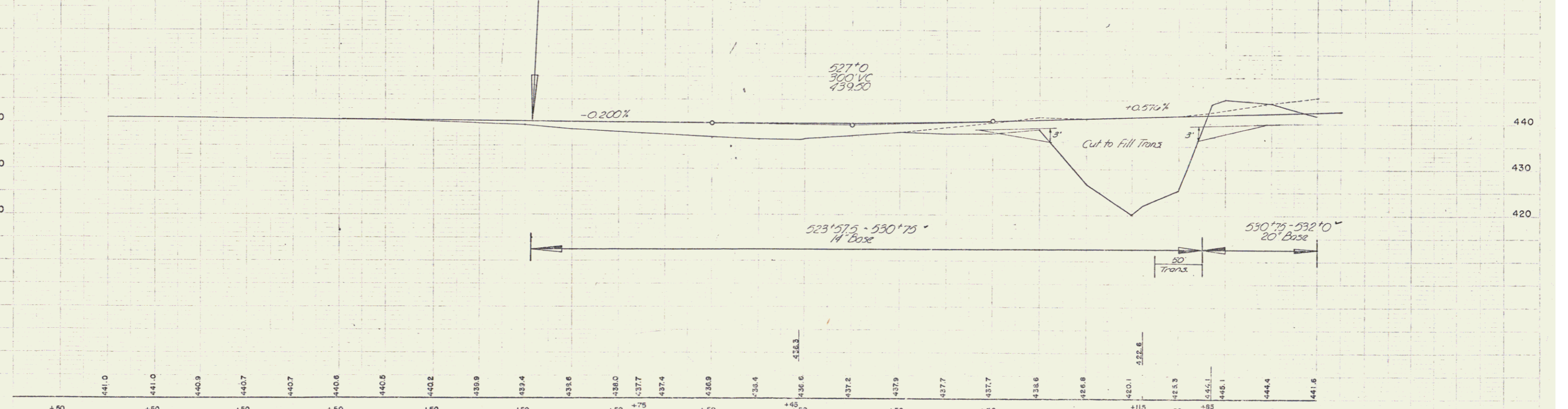
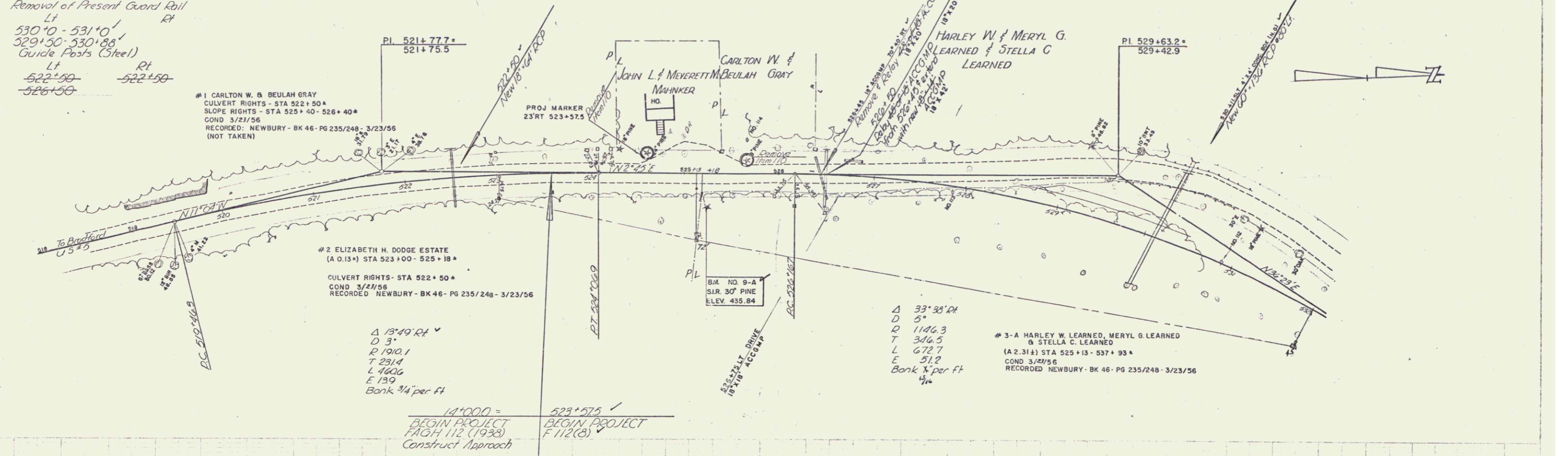
Plank Guard Rail  
~~528+00 Lt~~  
 530+0 Lt 24'

STEEL GUIDE POSTS  
 530+05 Lt

Construct Drive  
 525+0 Lt  
 +15  
 526+75 Lt

Turnout  
~~528+75 - 530+25 Lt~~  
 528+50 - 529+75 Lt

Removal of Present Road Surface Near  
~~527+60 - 532+00 Lt~~



BM NO. D-A SIR. 30" PINE 36" RT. STA 525+24 ELEV. 435.84

NEWBURY  
 PROJECT F NO 112 (8)  
 SHEET 10 OF 110