

**INDEX OF SHEETS**

SHEET NO.	TITLE PAGE
1	TYPICAL CROSS-SECTION OF IMPROVEMENT {2% GRAVEL FINED IN-PLACE SURFACE COURSE WITH REFINED TAR-ITEMS 25 & 30}
2	BANKING AND WIDENING TABLES
3	PLAN AND PROFILE SHEETS
4	" " " " OF OVERPASS - 20 SCALE
5	ABUTMENT NO. 1 DETAILS
6	" " NO. 2
7	PIER NO. 1 DETAILS
8	" " NO. 2
9	" " NO. 3
10	" " NO. 4
11	" " NO. 4
12	" " NO. 4
13	SERIES S.B. 24, NO. 28 TO 34 - 68° SKEW (3-64' SPANS)
14	S.E.P. 24 BLAST PLATE DETAILS 60° SKEW
15	S.B. 20 TYPICAL DETAILS G.E., I.K.L., GENERAL NOTES
16	S.B. 50 SINGLE STRAND CABLE GUARD RAIL
17	S. 30 STANDARD STRUCTURES - CABLE GUARD RAIL
18	S. 31 " " " " BOUNDARY MARKERS & DRAINAGE DETAILS
18A	DETAIL SHEET OF SPECIAL METAL DROP INLET
19	SERIES S.B. 11 BARRICADES, SIGNS & LIGHTS
20-29	CROSS SECTIONS

Standard Structure Sheet 530 approved by the Chief Engineer on Aug. 15, 1933.

Standard Structure Sheet 531 approved by the Chief Engineer on July 25, 1934.

**STATE OF VERMONT  
STATE HIGHWAY DEPARTMENT**

**PLAN AND PROFILE OF PROPOSED  
STATE HIGHWAY**

FEDERAL AID GRADE HIGHWAY PROJECT (F.A.G.H. 112)

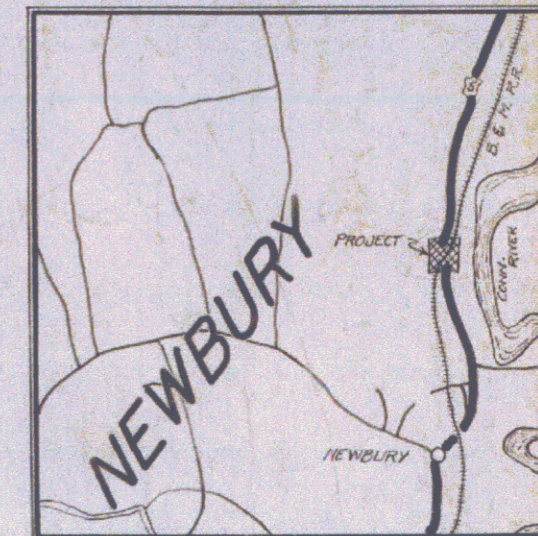
**TOWN OF NEWBURY**

**WELLS RIVER-BRADFORD ROAD  
OVERPASS ON U.S. 5**

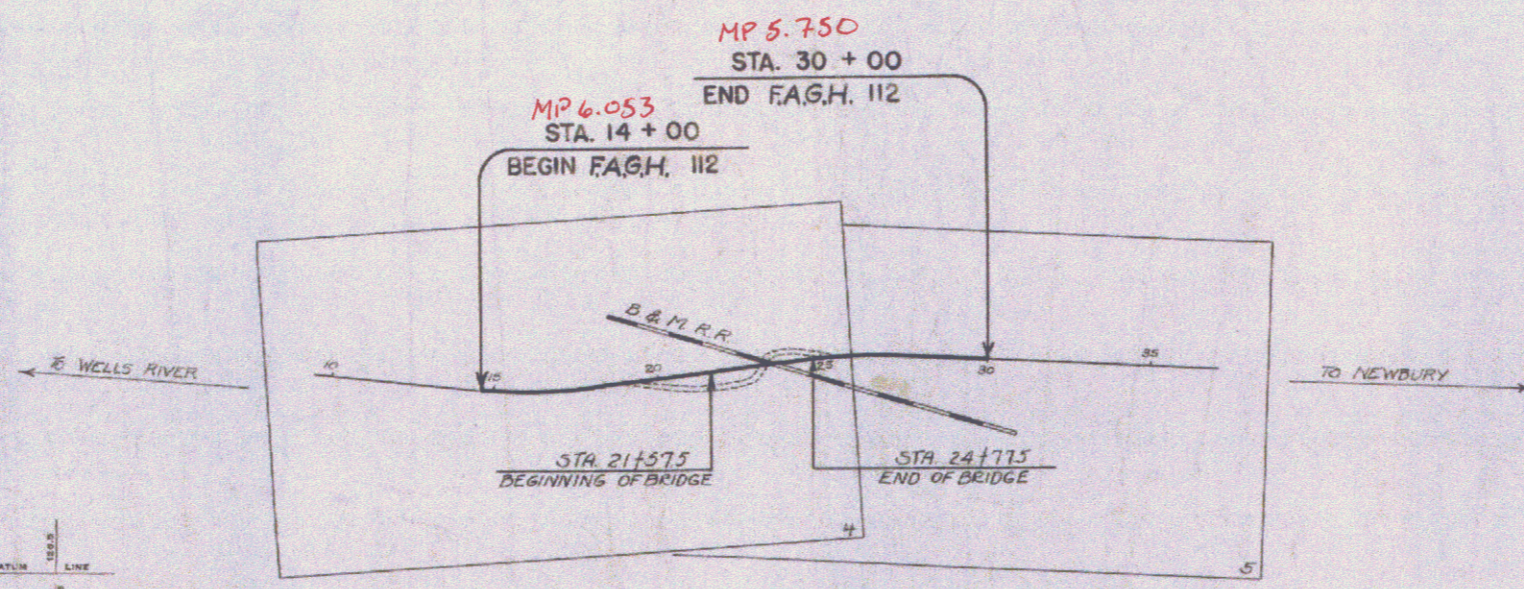
BEGINNING AT A POINT 9175 FT. NORTH OF THE B. & M. TRACKS AND EXTENDING SOUTHERLY 0.303 MILES TO A POINT 682.5 FT. SOUTH OF THE B. & M. TRACKS.

LENGTH OF PROJECT 16000 FT. = 0.303 MILES

FED. ROAD DIST. NO.	SHEET	F.A.G.H. PROJ. NO.	YEAR	SHEET NO.	TOTAL SHEETS
9	Vt.	112	1936	1	29



SCALE 1 INCH = 1 MILE



**CONVENTIONAL SIGNS**

COUNTY LINE	GROUND ELEVATION
TOWN LINE	FENCE LINE
STONE WALL	UNFENCED PROPERTY
GUARD RAIL	TRAVELED WAY
RAILROAD	RETAINING WALL
CULVERT	CENTER LINE
DROP INLET	POWER POLE
TROLLEY POLE	TELEPHONE POLE
TREES	HEDGE

**SCALES**

TITLE	1" = 300'
TYPICAL	1" = 2'
PLAN	1" = 50'
PROFILE HOR.	1" = 50'
PROFILE VER.	1" = 10'
CROSS SECTIONS	1" = 5'

These plans are subject to such revisions as may be required by the Bureau of Public Roads or the Commissioner of Highways.

Construction is to be carried on in accordance with the plans and Standard Road and Bridge Specifications of 1936, as approved December 29, 1936 by the Bureau of Public Roads, including all subsequent approved revisions and such revised specifications and special provisions as are submitted with the plans.

APPROVED: *[Signature]*  
CHIEF ENGINEER  
BOSTON & MAINE RAILROAD

APPROVED: *[Signature]*  
COMMISSIONER OF HIGHWAYS

SUBMITTED BY ORDER OF THE STATE HIGHWAY BOARD

1/1/1938  
Pin 99R273

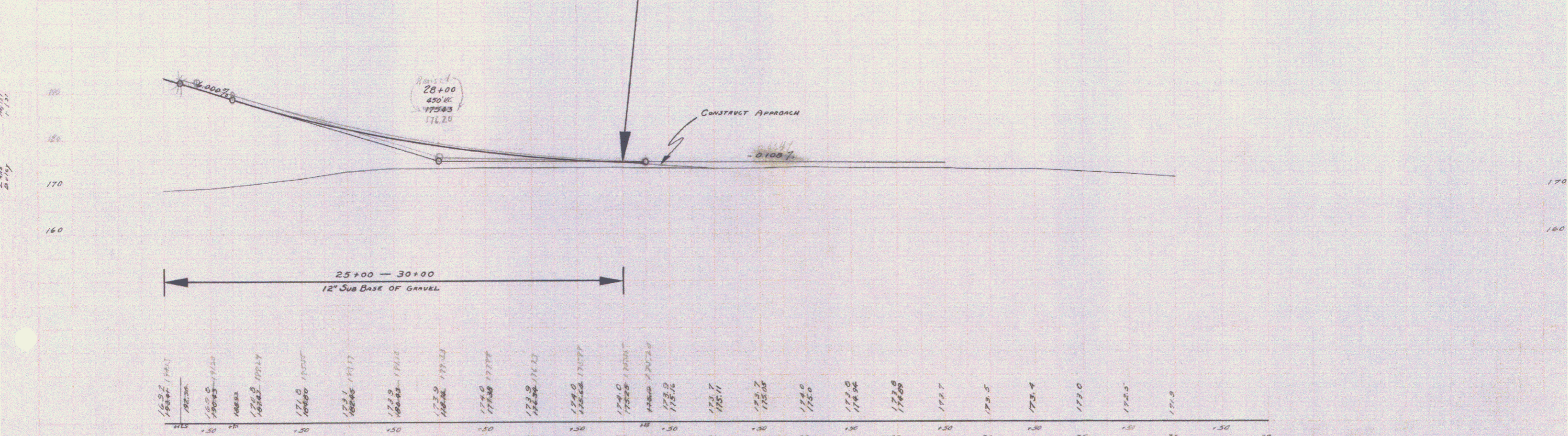
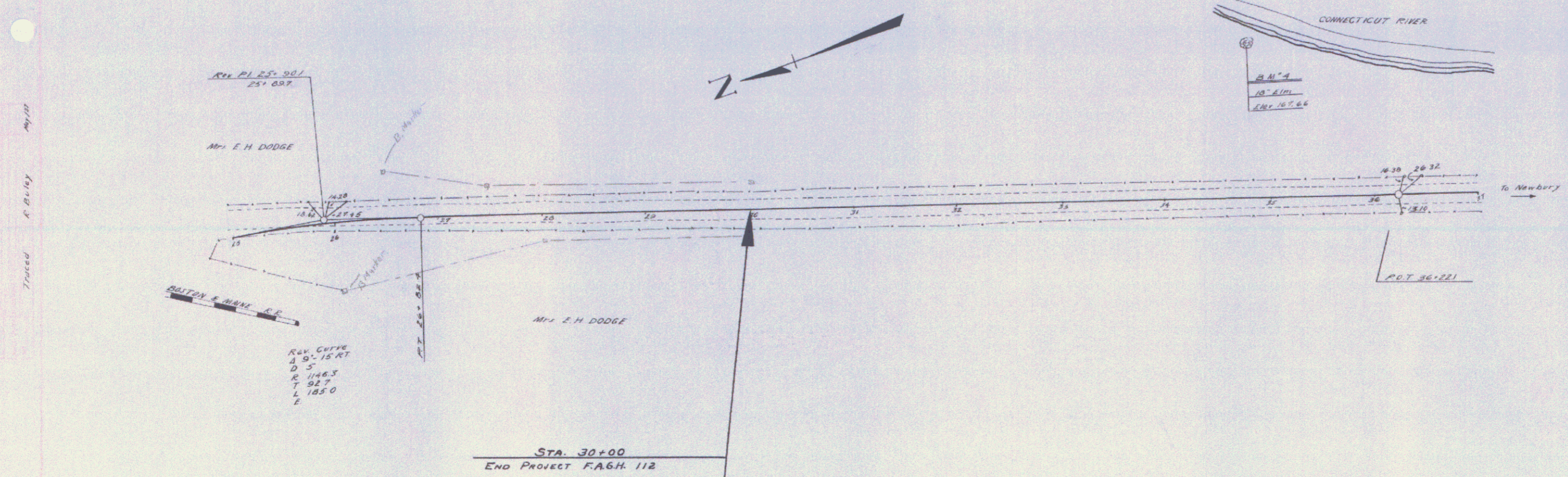
RECOMMENDED: \_\_\_\_\_  
DISTRICT ENGINEER BUREAU OF PUBLIC ROADS

RECOMMENDED FOR APPROVAL: \_\_\_\_\_  
CHIEF ENGINEER BUREAU OF PUBLIC ROADS

APPROVED: \_\_\_\_\_  
DIRECTOR - BUREAU OF PUBLIC ROADS

APPROVED: *[Signature]* CORRECT: *[Signature]* SERIES: 6112 FILED





ELM "A" SPINE IN ROOT OF 18" ELM 138' LT STA 34.00 ELEV 167.66

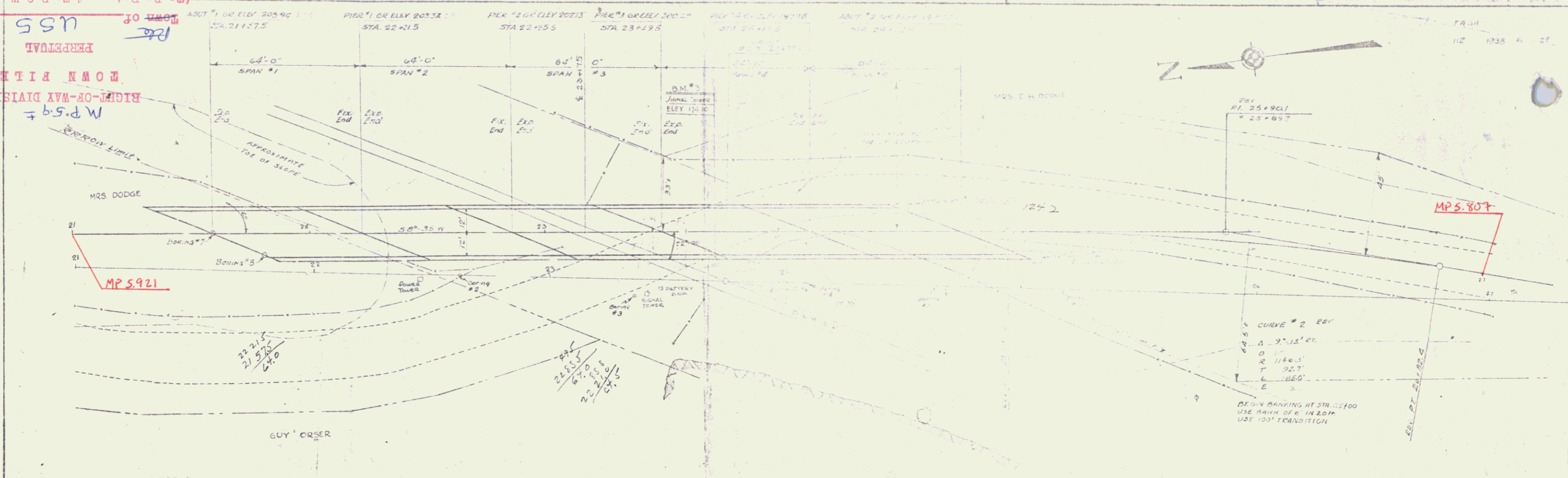
POOR ORIGINAL COPY

(To Be Returned to H.O.W. Division)

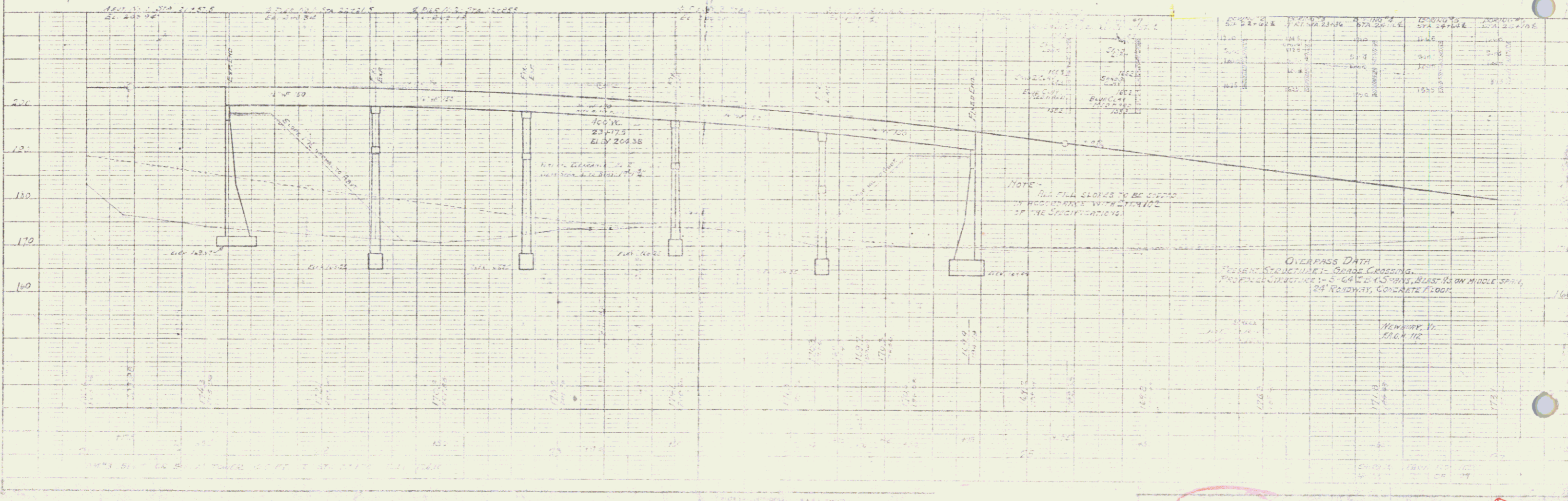
U.S.S. PERPETUAL

RIGHT-OF-WAY DIVISION  
M.P. 5.9 ±

PLAN	DATE	BY
PROFILE	DATE	BY
SECTION	DATE	BY
DETAIL	DATE	BY
ASSEMBLY	DATE	BY
CONSTRUCTION	DATE	BY



PROFILE	DATE	BY
SECTION	DATE	BY
DETAIL	DATE	BY
ASSEMBLY	DATE	BY
CONSTRUCTION	DATE	BY



NEWBURY DR 181