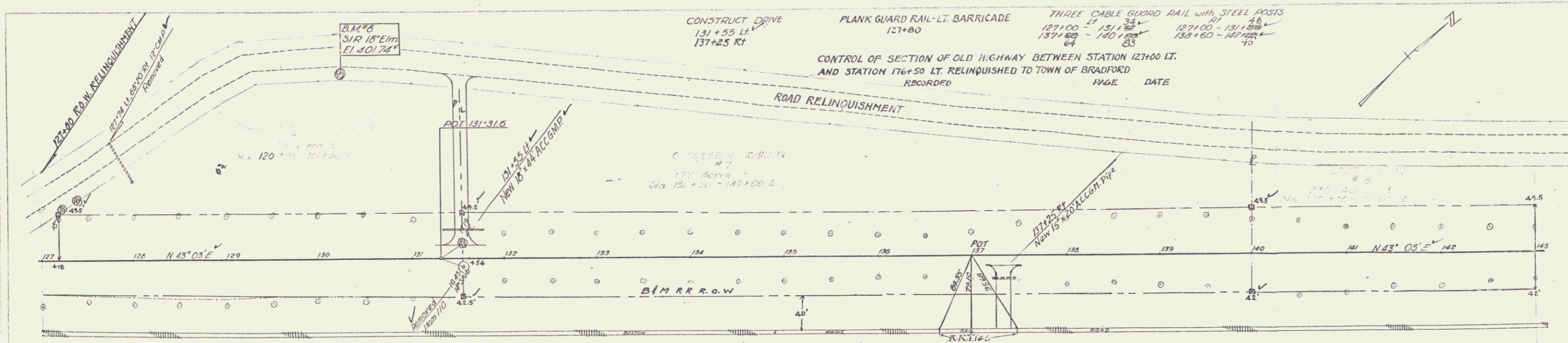


6/14
 6/14
 MILLER
 MILLER

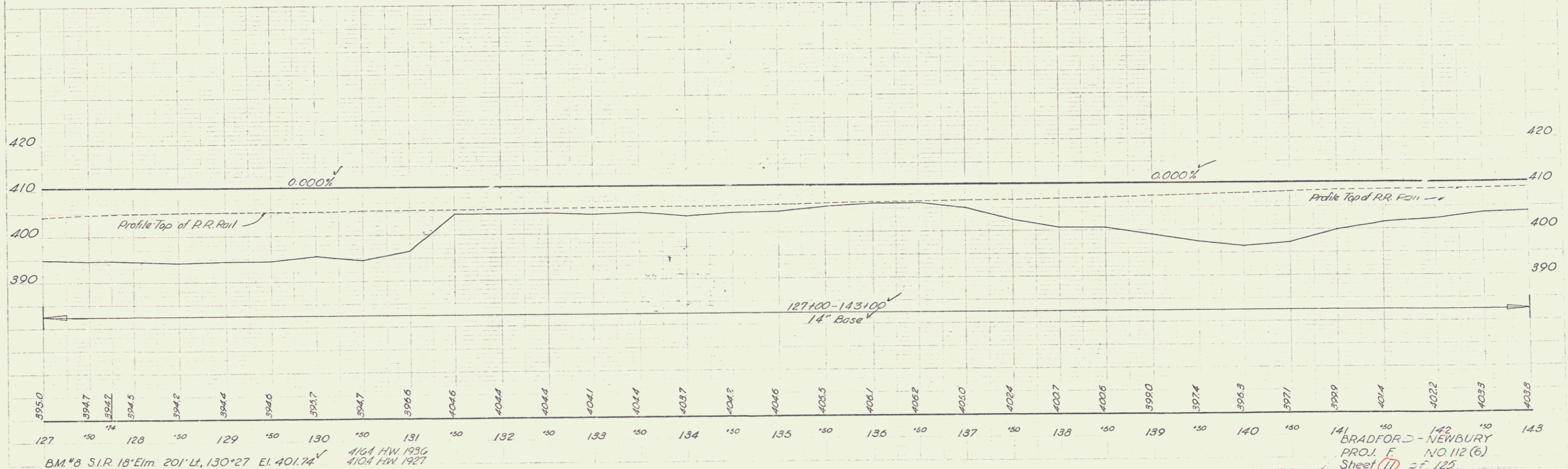


#6
 CHARLES J & EDITH L ALLEN
 STA. 125+38 - 131+56
 1.05 ACRES ±
 STA. 127+00 - 131+00
 SLOPE RIGHTS
 W.D.O.E. 6-8-56
 RECORDED: BRADFORD - BK 34 - PG 299 - 9/7/56

#7
 G. CARLETON JOHNSON
 STA. 131+56 - 140+00
 1.77 ACRES ±
 COND. 3-16-56
 RECORDED: BRADFORD - BK 34 - PG 150-156
 159-160 - 3/23/56

#8
 LOUIS F HAHN
 STA. 140+00 - 151+60
 2.36 ACRES ±
 STA. 149+25
 CULVERT RIGHTS
 COND. 3/16/56
 RECORDED: BRADFORD - BK 34 - PG 150-156
 159-160 - 3/23/56

6/14
 6/14
 MILLER
 MILLER



B.M. #3 S.I.R. 18' Elm 201' Lt., 130° 27' El. 401.74
 4/64 H.W. 1936
 4/04 H.W. 1927

BRADFORD - NEWBURY
 PROJ. E. NO. 112 (6)
 Sheet 11 of 125