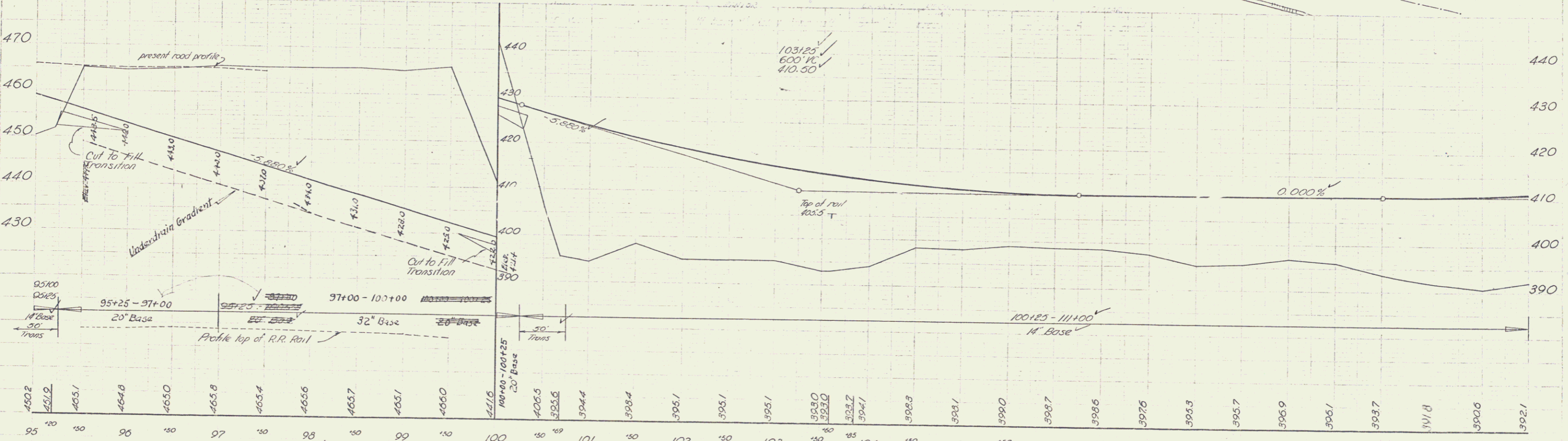
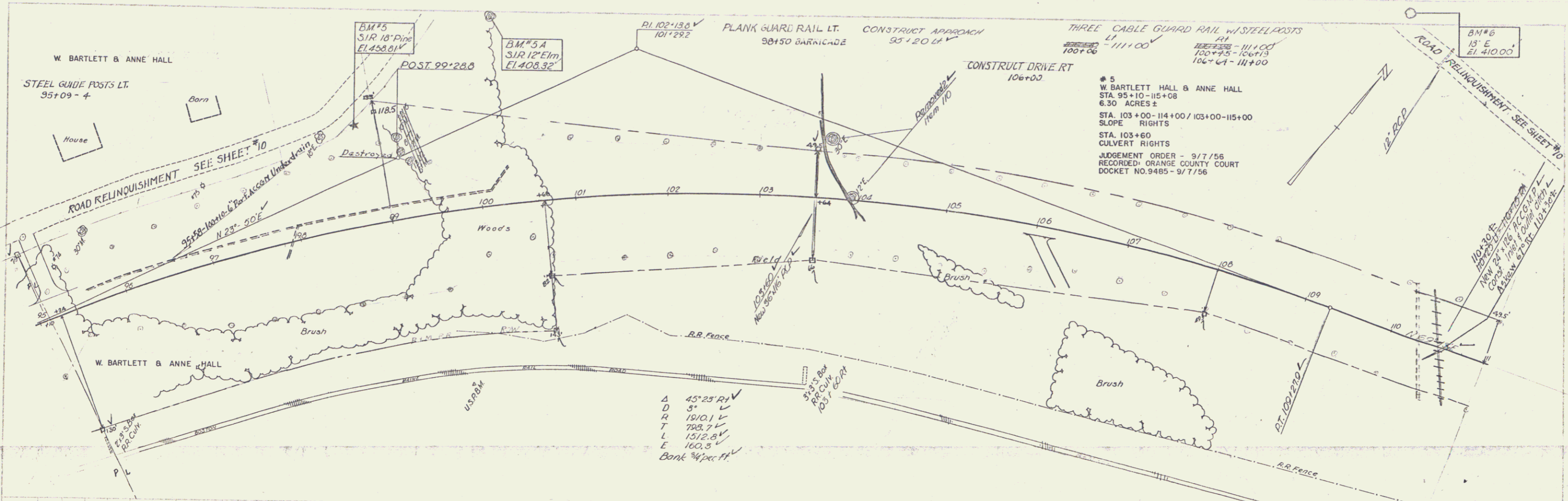


5/54
6/54
8/54
SPALLING MILLER
MILLER
TRACED



BM#5 SIR 18" Pine 110' Lt. Sta. 98+90, El. 458.81V
 BM#5A SIR 12" Elm 206' Lt. Sta. 100+32, El. 408.32V
 BM#6 SIR 18" Elm 320' Lt. Sta. 108+50 Elev. 410.00V
 416.4 HW 1996
 410.4 HW 1997

BRADFORD - NEWBURY
 PROJ. F. NO 112 (6)
 Sheet 9 of 125