

INDEX OF SHEETS

SHEET NO.	1	TITLE PAGE
"	2	TYPICAL CROSS-SECTION OF IMPROVEMENT (CRUSHED GRAVEL MIXED-IN-PLACE SURFACE COURSE WITH OUTRACK ASPHALT ITEM 342 MOD.)
"	3	BANKING AND WIDENING TABLES
"	4	QUANTITY SHEET (ITEMS)
"	5	QUANTITY SHEET (DRAINAGE)
"	6	EARTHWORK SHEETS
"	7-15	PLAN AND PROFILE
"	16	STANDARD STRUCTURE SHEET CONSTRUCTION DETAILS (GULVERTS & MARKERS)
"	17	STANDARD STRUCTURE SHEET CONSTRUCTION DETAILS #2 (SLOPE DETAILS)
"	18	STANDARD STRUCTURE SHEET CONSTRUCTION DETAILS #4 (CONCRETE SIDEWALK)
"	19	STANDARD STRUCTURE SHEET S-40 BARRICADES, SIGNS & LIGHTS
"	20	STANDARD STRUCTURE SHEET S45-45 GUARD RAIL
"	21	STANDARD STRUCTURE SHEET S53-48 PRECAST RCP DROP INLETS
"	22-42	CROSS SECTIONS

STANDARD STRUCTURE SHEET APPROVED BY THE CHIEF ENGINEER, VERMONT STATE DEPARTMENT OF HIGHWAYS
S-40 JUNE 10, 1950

STATE OF VERMONT
STATE HIGHWAY DEPARTMENT

PLAN AND PROFILE OF PROPOSED
STATE HIGHWAY

FEDERAL PROJECT

TOWN OF BRADFORD

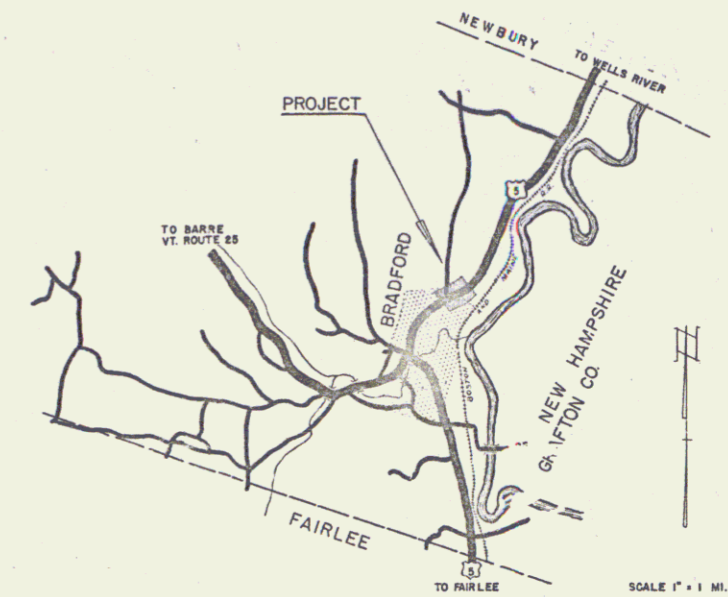
COUNTY OF ORANGE

U.S. ROUTE 5

FAIRLEE-WELLS RIVER ROAD

Pin # 99R269

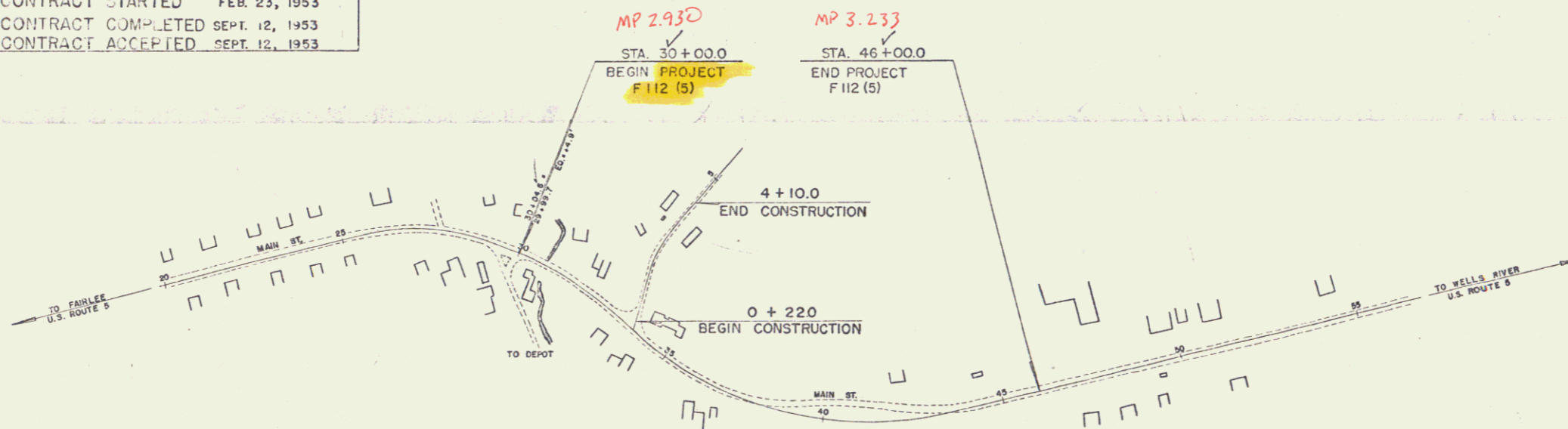
FED. ROAD DIST. NO.	STATE	PROJ. NO.	FISCAL YEAR	SHEET NO.	TOTAL SHEETS
1	VT.	F 112 (5)	POST WAR	1	42



PROJECT NAME & NUMBER	TYPE	PAVEMENT AREA
BRADFORD F 112 (5)	CE. TK. COAT.	7450 SY
RECORD PLANS MATERIALS		
SUB-BASE OF GRAVEL LOCAL	ROGER'S PIT	ACCGMP NEW ENGL. PIPE CO. PALMER, MASS.
TAR OLD COLONY TAR CO. WORCESTER, MASS.	RCP	VI. CONC. PIPE CORR. WINDSOR, VT.
ASPHALT TRIMOUNT, CAMBRIDGE, MASS. (ESSO)	CEMENT	LONE STAR PORTLAND CEM. CO. HUDSON, N.Y.
CR. GRAVEL CALEDONIA SAND & GRAVEL CO.	CONC. AGG.	CALEDONIA SAND & GRAVEL CO.
GUARD RAIL A-1 STEEL & WIRE CO. NEW HAVEN, CONN.	GRANITE CURB	FLETCHER, CHELSEA, MASS.
CONTRACTOR LEWIS & SCOTT, ANDOVER, MASS.	CONTRACT DATED	FEB. 23, 1953
RES. ENGINEER G. DOWNING & T. DUDLEY	CONTRACT STARTED	FEB. 23, 1953
INSPECTOR	CONTRACT COMPLETED	SEPT. 12, 1953
RECORD PLANS T. DUDLEY & G. HOPKINS	CONTRACT ACCEPTED	SEPT. 12, 1953

BEGINNING AT A POINT 285.0 FEET EASTERLY OF THE INTERSECTION OF VERMONT ROUTE 25 AND U.S. ROUTE 5 AND EXTENDING EASTERLY 1600.00 FEET

LENGTH OF PROJECT 1600.00 FEET = 0.303 MILE



RIGHT-OF-WAY DIVISION
TOWN FILE

PERPETUAL

Town of US 5
(To Be Returned To R.O.W. Division)

APPROVED: December 17, 1951
H. E. Sargent
CHIEF ENGINEER

SUBMITTED BY ORDER OF THE STATE HIGHWAY BOARD

FOR ANY OTHER INFORMATION CONCERNING QUANTITIES AND SPECIFICATIONS REFER TO THE PLAN SET MAY BE FOUND IN THE FIELD BOOK OF THE ESTIMATE FILE.

DEPARTMENT OF COMMERCE
BUREAU OF PUBLIC ROADS

RECOMMENDED FOR APPROVAL

DISTRICT ENGINEER DATE

APPROVED

DIVISION ENGINEER DATE

APPROVED Dec 31 1951
CONSTRUCTION ENGINEER

APPROVED Dec 31 1951
HIGHWAY ENGINEER

APPROVED Dec 31 1951
DISTRICT ENGINEER

PROJECT F NO. 112 (5) FILED
SHEET 1 OF 42

GROUND ELEVATION DATUM LINE

GRADE ELEVATION DATUM LINE

CURVE DATA

DEFLECTION ANGLE.....Δ
DEGREE OF CURVE.....D
RADIUS OF CURVE.....R
TANGENT DISTANCE.....T
LENGTH OF CURVE.....L
EXTERNAL DISTANCE.....E
POINT OF INTERSECTION.....P. I.
POINT OF CURVE.....P. C.
POINT OF TANGENT.....P. T.
POINT ON TANGENT.....P. O. T.

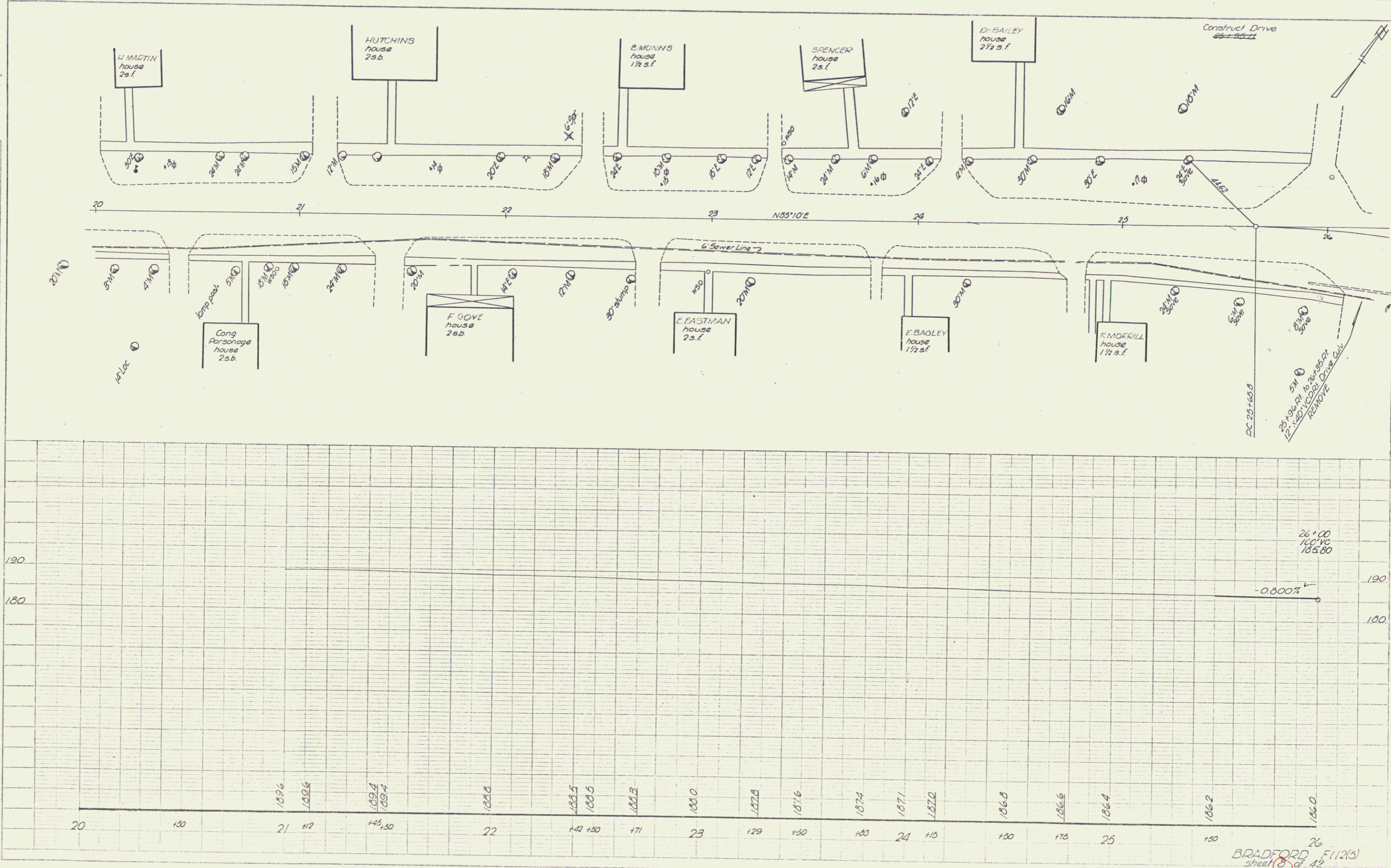
SCALES

TITLE 1" = 500'
TYPICAL 1" = 5'
PLAN 1" = 20'
PROFILE HORIZONTAL 1" = 20'
PROFILE VERTICAL 1" = 10'
CROSS SECTIONS 1" = 5'

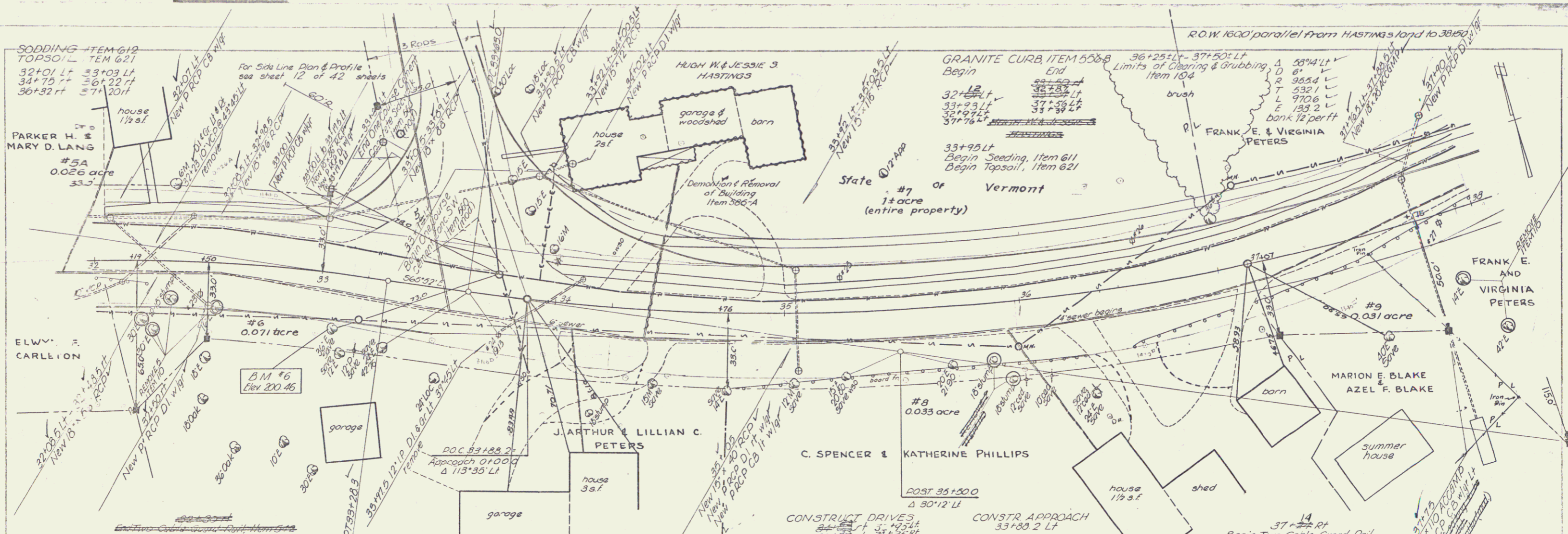
THESE PLANS ARE SUBJECT TO SUCH REVISIONS AS MAY BE REQUIRED BY THE BUREAU OF PUBLIC ROAD OR THE COMMISSIONER OF HIGHWAYS
CONSTRUCTION IS TO BE CARRIED ON IN ACCORDANCE WITH THE PLANS AND THE STANDARD ROAD AND BRIDGE SPECIFICATIONS OF 1948, AS APPROVED JULY 25 1949 BY THE BUREAU OF PUBLIC ROADS INCLUDING ALL SUBSEQUENT APPROVED REVISIONS AND SUCH REVISED SPECIFICATIONS AND SPECIAL PROVISIONS AS ARE SUBMITTED WITH THE PLANS.

PLAN
 CONTAINS
 ALL INFORMATION
 NECESSARY FOR
 THE CONSTRUCTION
 OF THIS PROJECT
 NO. 100-100-100

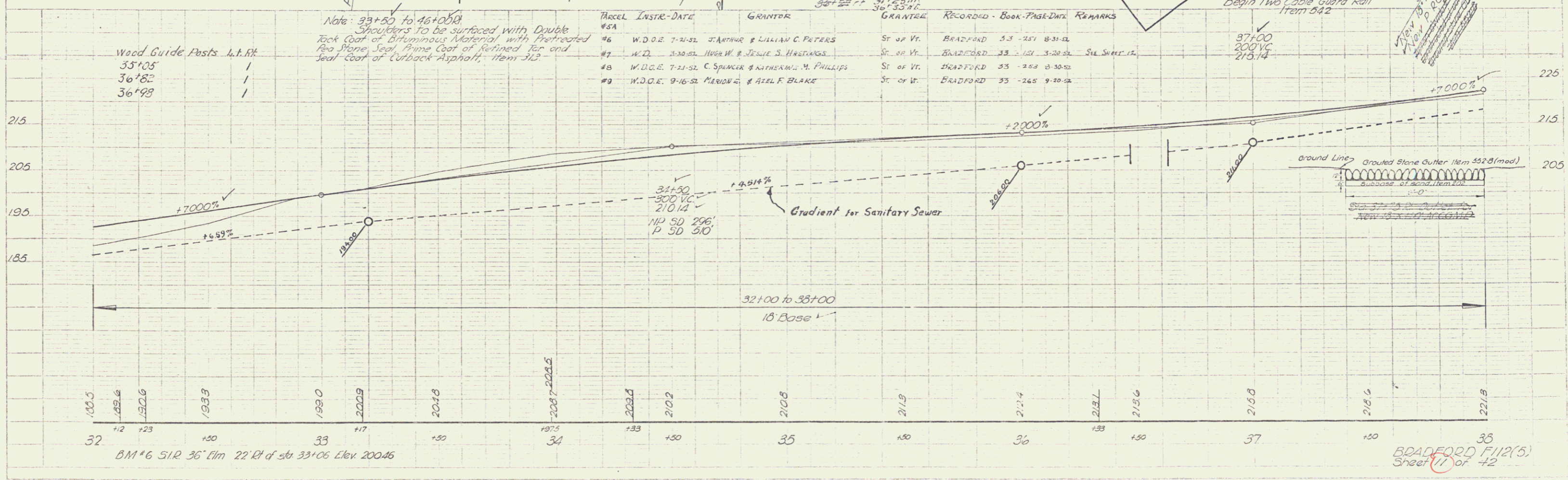
BRADFORD
 ENGINEERS
 100-100-100
 BRADFORD
 ENGINEERS
 100-100-100



BRADFORD F112(5)
 sheet 8 of 12



Scale	1" = 40'
Spreading	7.5'
Height	6.5'



Wood Guide Posts 4.1.R.R.
 35+05 /
 36+82 /
 36+98 /

Note: 33+50 to 46+00B
 Shoulders to be surfaced with Double
 Rock Coat or Bituminous Material with Peat-treated
 Red Stone Seal Prime Coat of Refined Tar and
 Seal Coat of Cutback Asphalt, Item 312

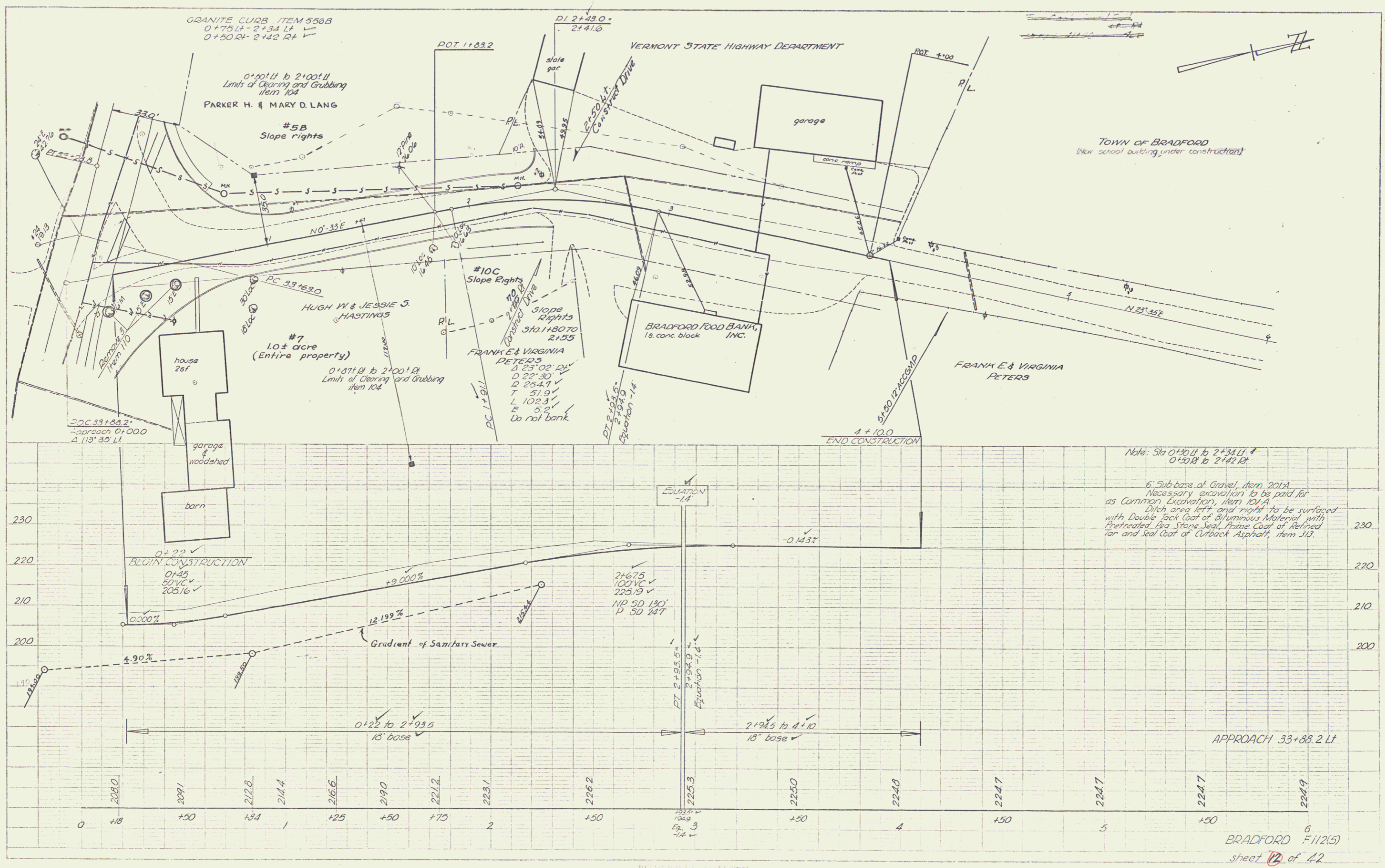
Parcel	INSTR. DATE	GRANTOR	GRANTEE	RECORDED - BOOK-PAGE-DATE	REMARKS
#5A					
#6	W.D.O.E. 7-21-51	J. ARTHUR & LILLIAN C. PETERS	ST. OF VT.	BRADFORD 53-251 8-31-51	
#7	W.D. 3-30-51	HUGH W. & JESSIE S. HASTINGS	ST. OF VT.	BRADFORD 53-151 3-28-51	SUB. SHEET 12
#8	W.D.O.E. 7-21-51	C. SPENCER & KATHERINE M. PHILLIPS	ST. OF VT.	BRADFORD 53-258 8-30-51	
#9	W.D.O.E. 9-16-51	MARION E. & AZEL F. BLAKE	ST. OF VT.	BRADFORD 53-265 9-10-51	

BM #6 SIR 36' Elm 22' Rt of stn 33+06 Elev 200.46

BRADFORD F/12(5)
 Sheet 11 of 42

PLAN
 DATE 10/1/55
 BY B. J. B. / J. B. B.

PROFILE
 DATE 10/1/55
 BY B. J. B. / J. B. B.

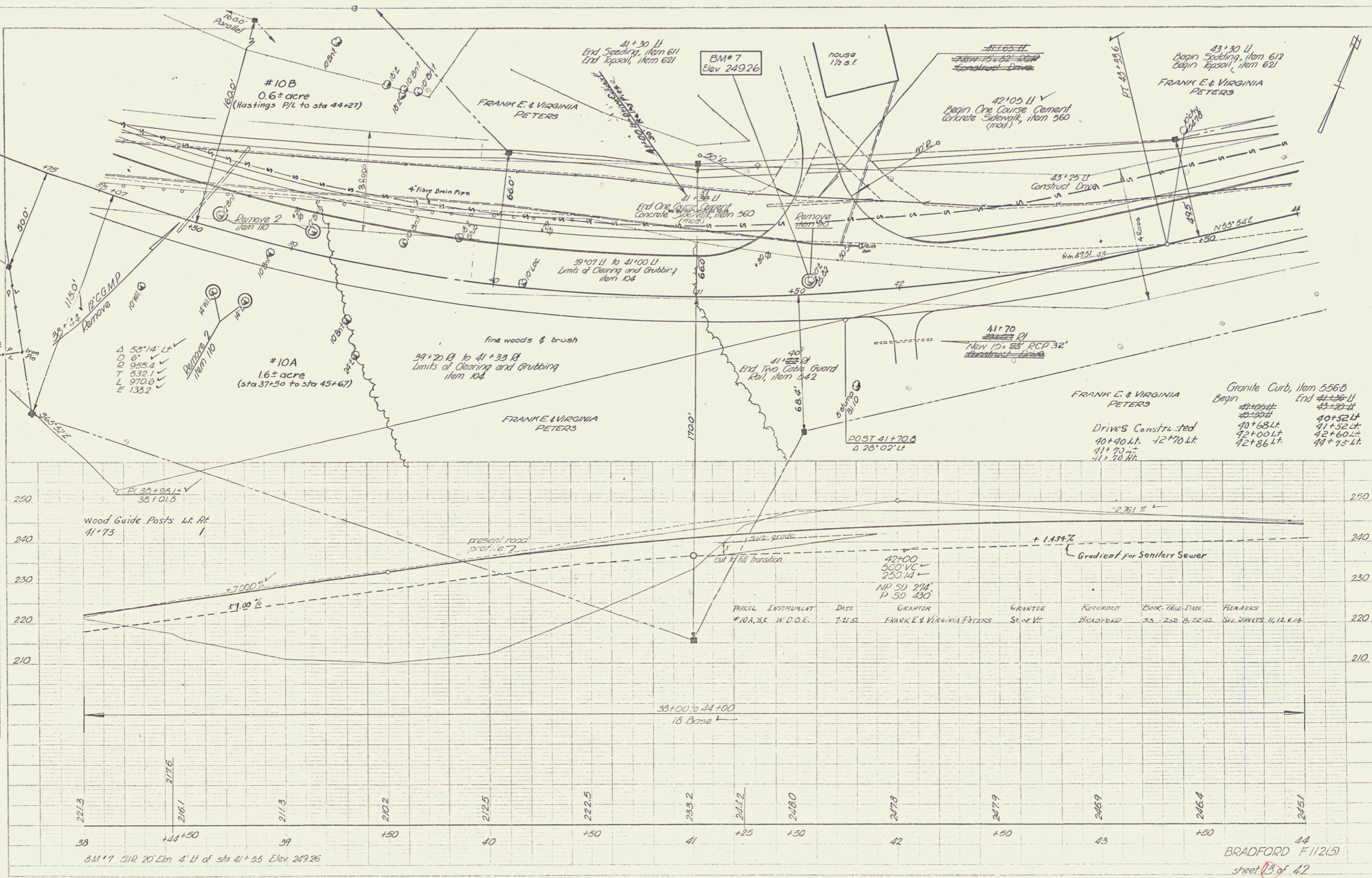


BRADFORD F-112(5)
 sheet 12 of 42

5

DATE	11/23
BY	HW
SCALE	AS SHOWN
PROJECT	FRANK E. & VIRGINIA PETERS
DESCRIPTION	ROADWAY & SANITARY SEWER
REVISIONS	

NO.	DATE	DESCRIPTION
1		INITIAL DESIGN
2		REVISED
3		REVISED
4		REVISED
5		REVISED
6		REVISED
7		REVISED
8		REVISED
9		REVISED
10		REVISED

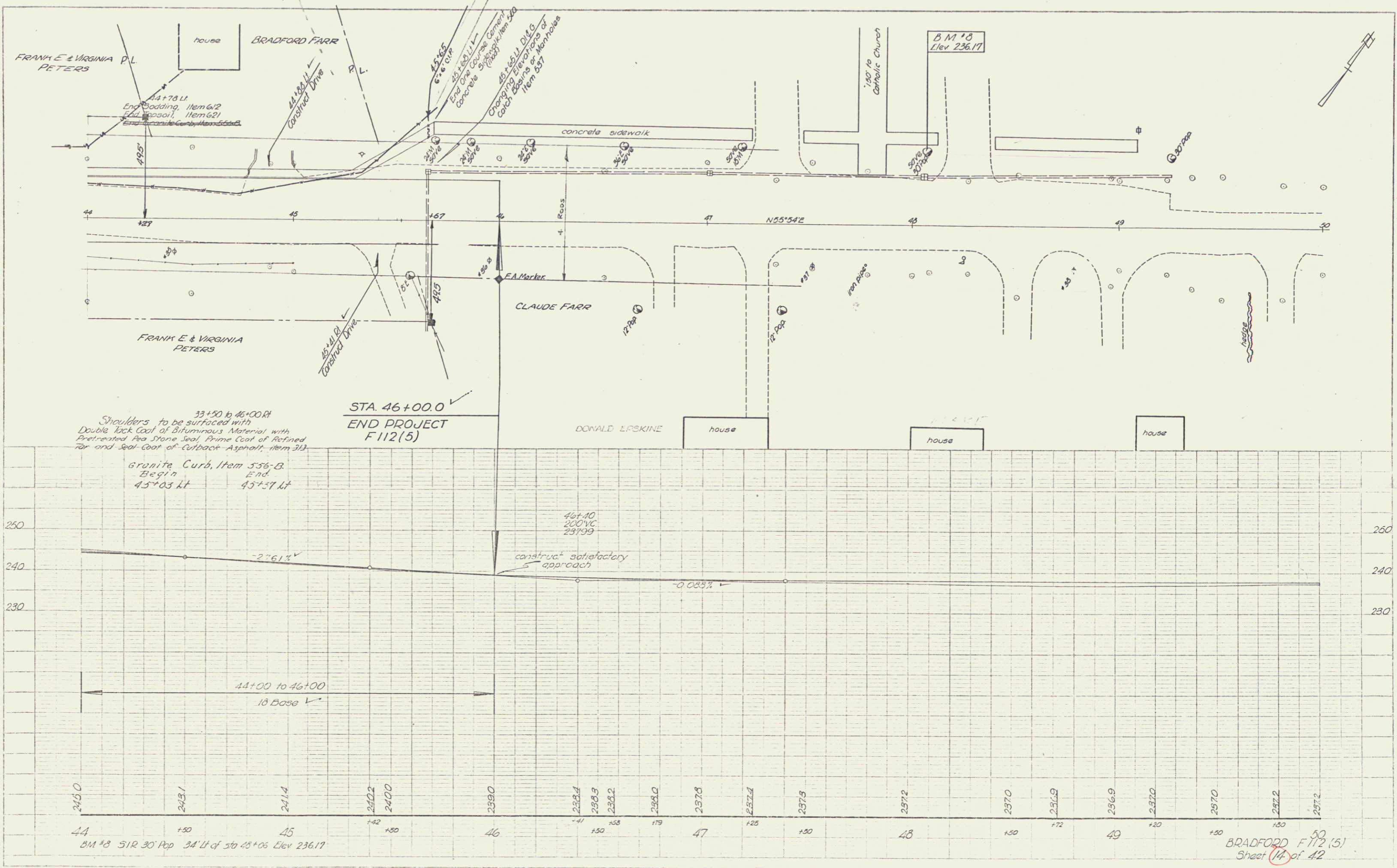


BM #7 51R 20' Elm 4' Lt of sta 41+55 Elev. 249.26

BRADFORD F11215
sheet 13 of 42

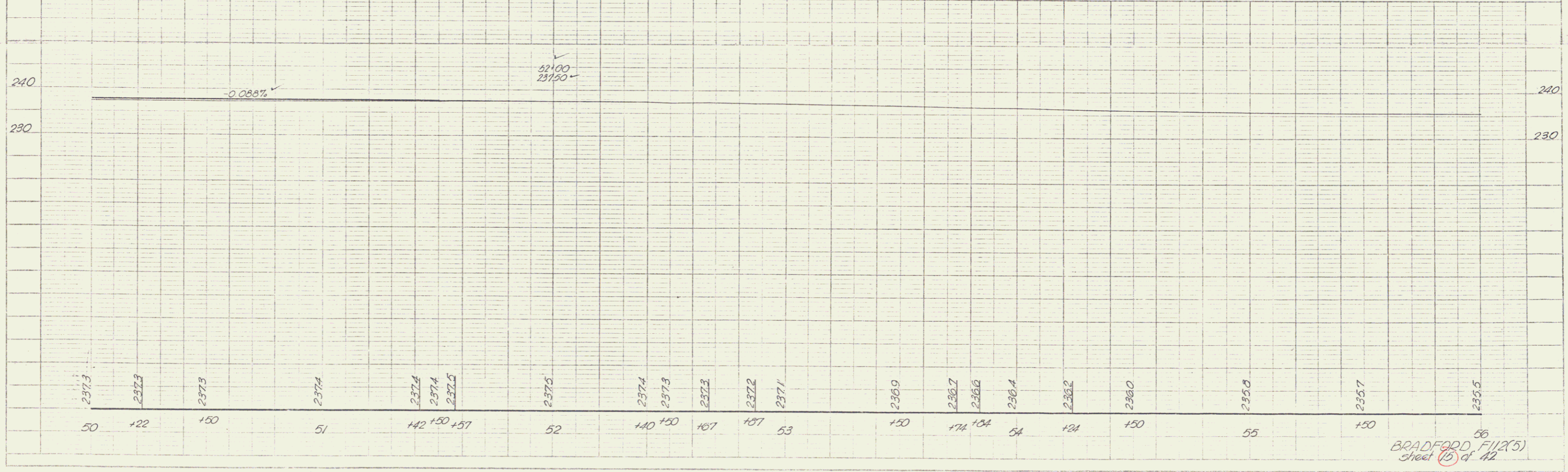
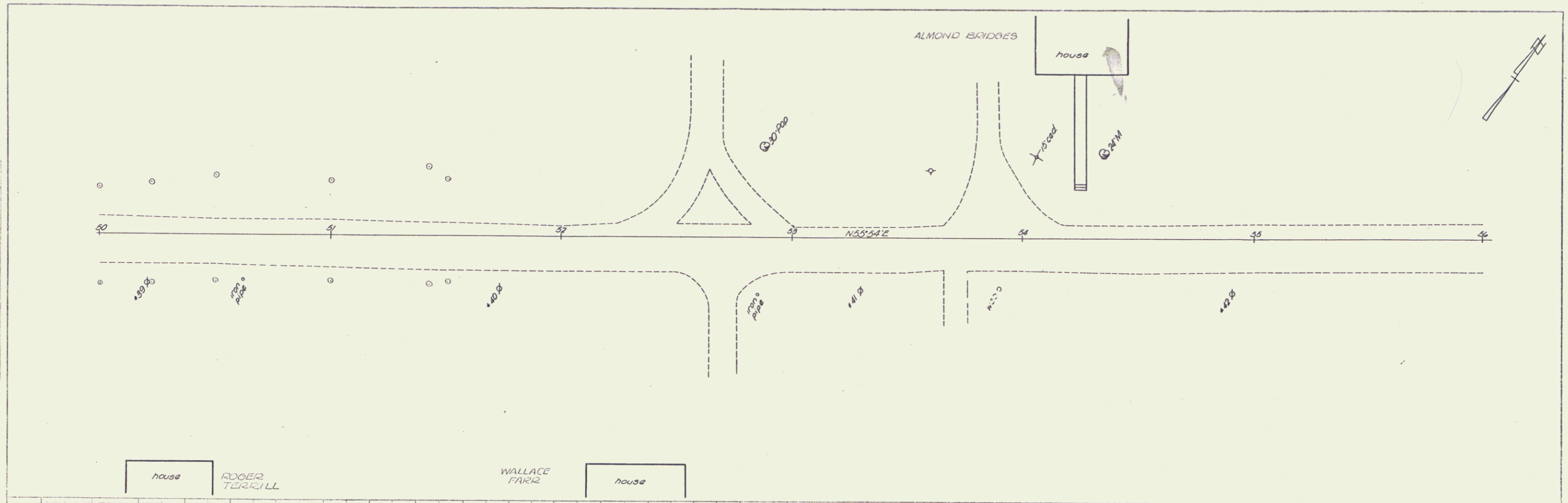
6

PLAN	2-40
DATE	12-10-51
BY	W. J. ...
CHECKED	...
APPROVED	...



BRADFORD F112(5)
Sheet 14 of 42

PLAN
 DATE BOOK
 NO. 178
 Spaulding 12-43
 C.E.H.
 887



56
 BRADFORD, F.I. (25)
 Sheet 15 of 42