

Construct Drives
 314+70 Rt (Comm)
 315+00 Lt
 316+60-317+00 Lt (Pave)
 318+55-318+95 Rt (Pave)
 319+50-319+90 Lt (Pave)
 320+10-320+50 Rt (Pave)
 320+15-320+55 Lt
 322+30 Rt
 323+60 Rt
 327+30 Rt
 327+65 Rt (Pave)
 328+70 Lt
 328+70 Lt (Comm)
 323+50 Lt (Comm)
 322+50 Lt (Comm)

Vertical Granite Curb, Item 556-B
 US 5 315+00 Rt - VI 25 99+67 Rt
 US 5 315+25 - 316+60 Lt
 US 5 317+00 Lt - VI 25 97+20 Rt
 VI 25 97+10 Lt - US 5 319+60 Lt
 VI 25 99+60 Lt - US 5 318+50 Rt
 45

Overhead Traffic Sign Support, Item 703
 US 5 316+90 Rt
 US 5 319+00 Lt

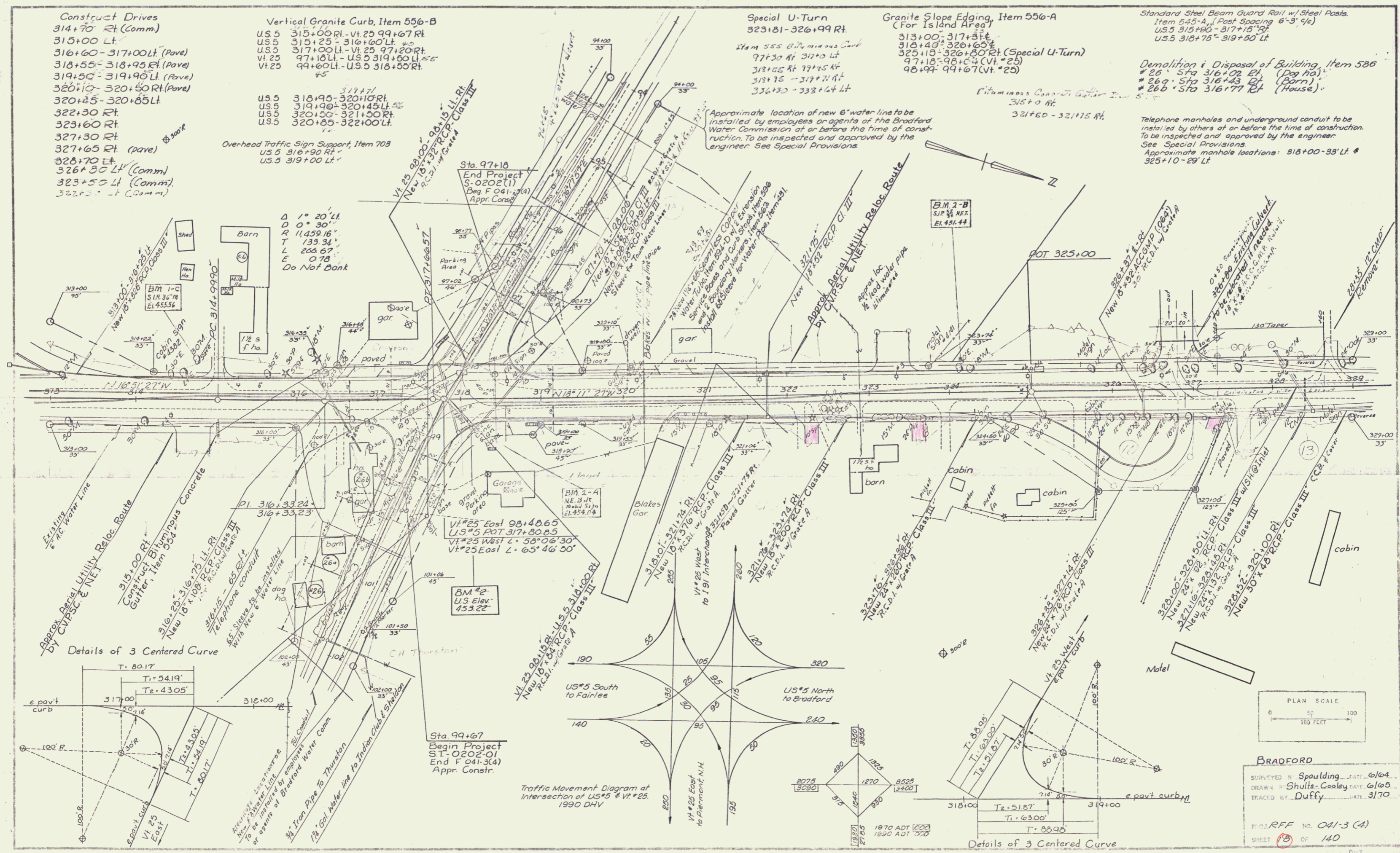
Special U-Turn
 323+81-326+99 Rt
 Item 555 8" x 12" x 12" Curbs
 97+30 Rt 317+00 Lt
 318+55 Rt 317+45 Lt
 318+75 - 317+70 Lt
 335+30 - 338+24 Lt

Granite Slope Edging, Item 556-A
 (For Island Area)
 313+00-317+80 Rt
 318+40-320+60 Rt
 325+10-326+80 Rt (Special U-Turn)
 97+10-98+00 (VI 25)
 98+99-99+67 (VI 25)

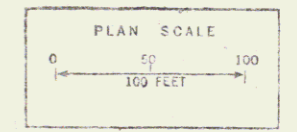
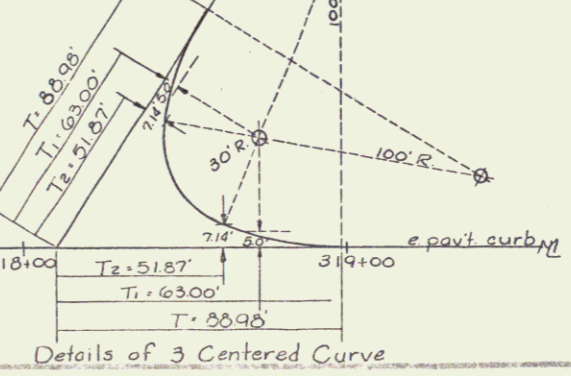
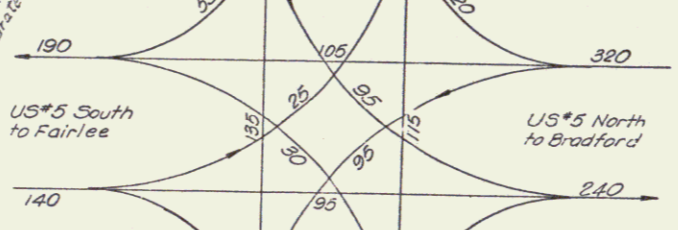
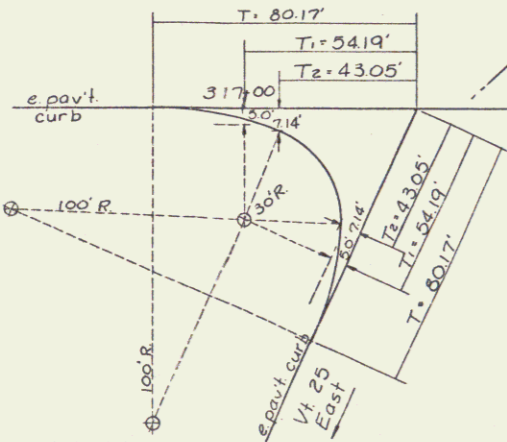
Standard Steel Beam Guard Rail w/Steel Posts
 Item 545-A, (Post Spacing 6'-3" @c)
 US 5 315+00 - 317+15 Rt
 US 5 318+75 - 319+50 Lt

Demolition & Disposal of Building, Item 586
 # 26' Sta 316+02 Rt (Dog Ho)
 # 269' Sta 316+43 Rt (Barn)
 # 266' Sta 316+77 Rt (House)

Telephone manholes and underground conduit to be installed by others at or before the time of construction. To be inspected and approved by the engineer. See Special Provisions.
 Approximate manhole locations: 318+00-33' Lt & 325+10-29' Lt



Details of 3 Centered Curve



BRADFORD
 SURVEYED BY Spaulding DATE 6/64
 DRAWN BY Shultz-Cooley DATE 6/65
 TRACED BY Duffy DATE 3/70
 PROJECT NO. 041-3 (A)
 SHEET 18 OF 140