

INDEX OF SHEETS

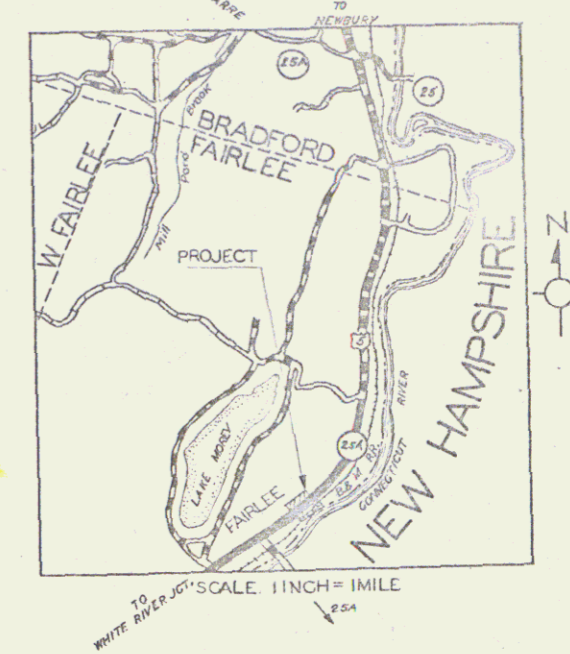
SHEET NO. 1	TITLE PAGE
2	TYPICAL CROSS-SECTION OF IMPROVEMENT 2% CRUSHED GRAVEL MIXED IN PLACE SURFACE COURSE WITH REFINED TAR ITEMS 25 & 30
3	BANKING AND WIDENING TABLES
4-6	PLAN AND PROFILE
7	STANDARD STRUCTURES S-28 PIPE CULVERTS
8	" " SC-2-4 BOX CULVERTS
9	" " SCW-4 BOX CULVERTS
10	" " S-30 WOOD GUARD RAIL
11	" " S-30A BOUNDARY MARKERS
12	" " S-40 BARRICADES, SIGNS & LIGHTS
13	" " S-41 ROUNDING SLOPES
14-25	CROSS SECTIONS

STANDARD STRUCTURE SHEETS APPROVED BY THE CHIEF ENGINEER, V.S.H.D.

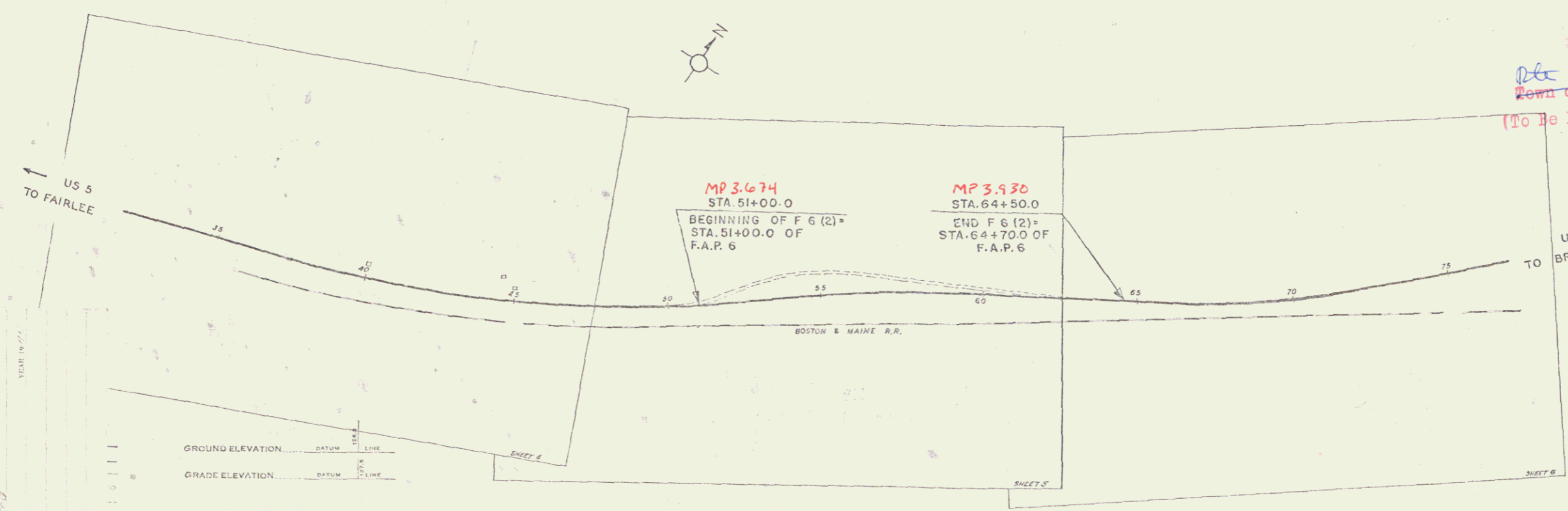
S-28	APRIL 26, 1941
S-30	MAY 12, 1941
S-30A	APRIL 19, 1941
S-40	DEC. 18, 1945

STATE OF VERMONT
STATE HIGHWAY DEPARTMENT
PLAN AND PROFILE OF PROPOSED
STATE HIGHWAY
 FEDERAL AID PROJECT
TOWN OF FAIRLEE
 ROUTE U.S. 5
 WHITE RIVER JCT. ST. JOHNSBURY ROAD

FEED NO.	STATE	PROJECT NO.	SHEET NO.	TOTAL SHEETS
9	VT	F6(2)	1	25



BEGINNING AT A POINT ON U.S. 5 - 0.435 MILES NORTHERLY OF ITS INTERSECTION WITH ROUTE 25 A TO ORFORD N.H. AND EXTENDING NORTH EASTERLY 0.255 MILES
 LENGTH OF PROJ. 1348.8 FT = 0.255 MILES



RIGHT-OF-WAY DIVISION
 TOWN FILE
 PERPETUAL
 Town of U.S.S.
 (To Be Returned To R.O.W. Division)

APPROVED: *December 6, 1944*
H. B. August
 COMMISSIONER OF HIGHWAYS
 SUBMITTED BY ORDER OF THE STATE HIGHWAY BOARD

COUNTY	FAIRLEE
TOWN	FAIRLEE
FENCE	STONE
UNFENCE	UNFENCE
CURB	TRAVEL
RAILROAD	RETAIN
CEMENT	CURVE
DRIFT	TRUSS
POWER	POWER
TELEPHONE	TELEPHONE
TREES	TREES
HEDGE	HEDGE

CURVE DATA

DEFLECTION ANGLE	Δ
DEGREE OF CURVE	D
RADIUS OF CURVE	R
TANGENT DISTANCE	T
LENGTH OF CURVE	L
EXTERNAL DISTANCE	E
POINT OF INTERSECTION	P. I.
POINT OF CURVE	P. C.
POINT OF TANGENT	P. T.
POINT ON TANGENT	P. O. T.

SCALES

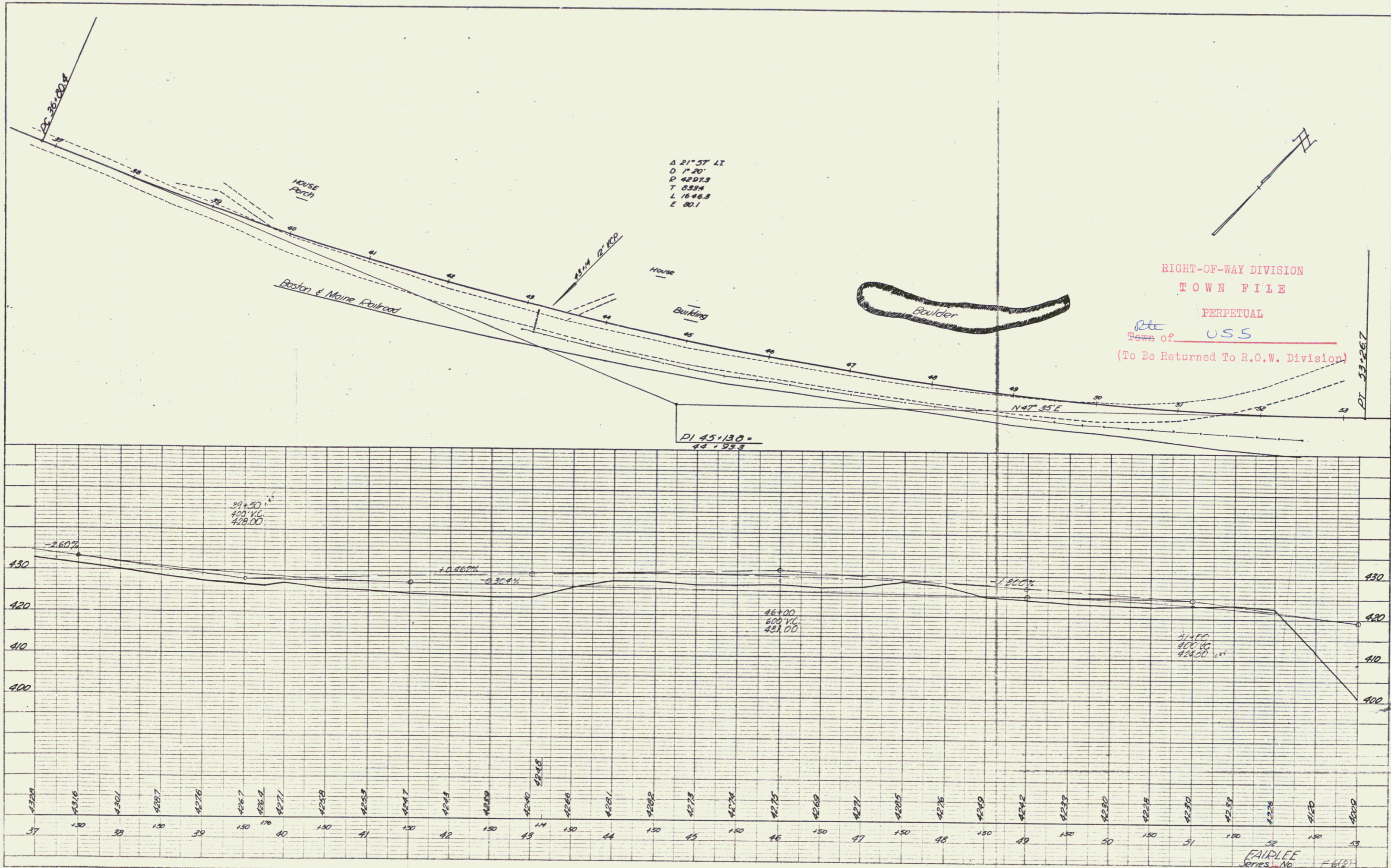
TITLE	1" = 200'
TYPICAL	1" = 2'
PLAN	1" = 50'
PROFILE HORIZONTAL	1" = 50'
PROFILE VERTICAL	1" = 10'
CROSS SECTIONS	1" = 5'

THESE PLANS ARE SUBJECT TO SUCH REVISIONS AS MAY BE REQUIRED BY THE PUBLIC ROADS ADMINISTRATION OR THE COMMISSIONER OF HIGHWAYS
 CONSTRUCTION IS TO BE CARRIED ON IN ACCORDANCE WITH THE PLANS AND THE STANDARD ROAD AND BRIDGE SPECIFICATIONS OF 1930, AS APPROVED DECEMBER 29TH 1935 BY THE PUBLIC ROADS ADMINISTRATION, INCLUDING ALL SUBSEQUENT APPROVED REVISIONS AND SUCH REVISED SPECIFICATIONS AND SPECIAL PROVISIONS AS ARE SUBMITTED WITH THE PLANS.

APPROVED: *December 15, 1944* APPROVED: _____
 ROAD ENGINEER DISTRICT HIGHWAY COMMISSIONER
 SERIES F No. 6(2) FILED
 SHEET 1 OF 25

PLAN
 DRAWN BY: [Signature]
 CHECKED BY: [Signature]
 DATE: 12-10-49

PROFILE
 DRAWN BY: [Signature]
 CHECKED BY: [Signature]
 DATE: 12-10-49

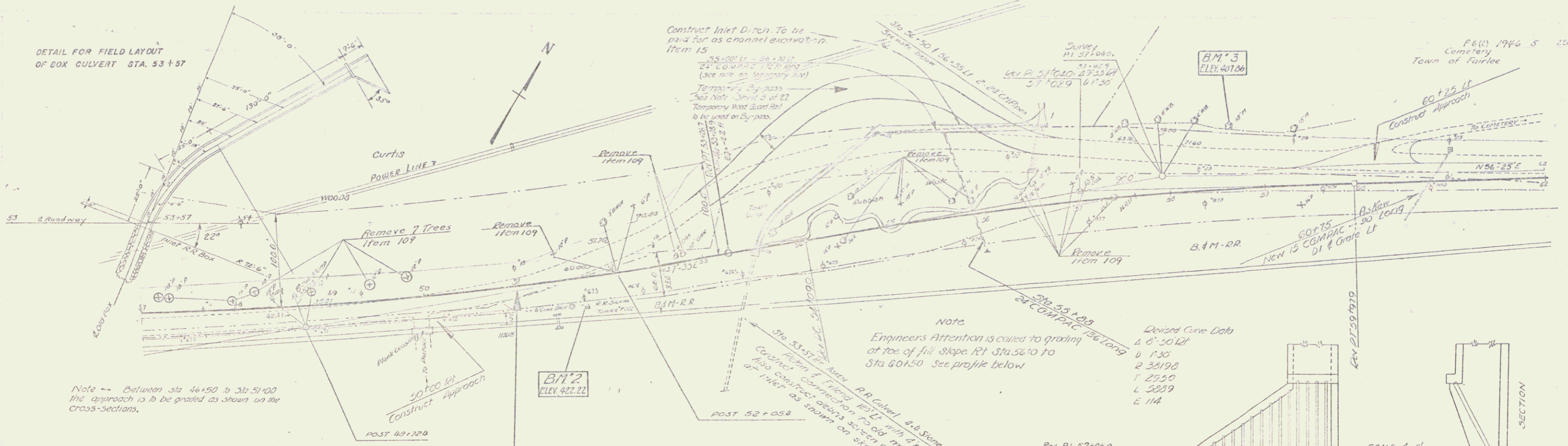


RIGHT-OF-WAY DIVISION
 TOWN FILE
 PERPETUAL
 Town of USS
 (To Be Returned To R.O.W. Division)

PLATE 1 - PLAN - PROFILE OF P. & M. STANDING
 DESIGNED BY EDGAR G. NEW YORK
 SCALE: 1" = 40'

FAIRLEE
 Series No. F-6(2)
 Sheet 10 of 10

DETAIL FOR FIELD LAYOUT OF BOX CULVERT STA. 53+57



PARCEL	INSTRUMENT	DATE	GRANTOR	GRANTEE	RECORDED FAIRLEE	BOOK	PAGE	DATE
430								
420								
410								
400								
390								

Note -- The project is designed for the construction operation in connection with the construction of the 4'x4' RC Box at Sta 53+57 to be carried out in the following manner:

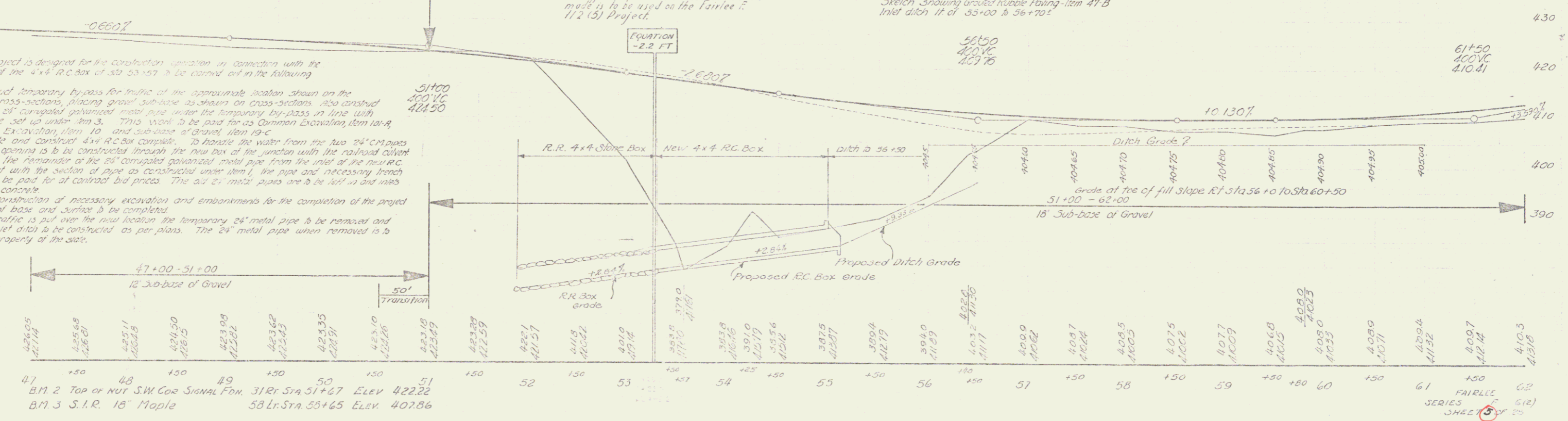
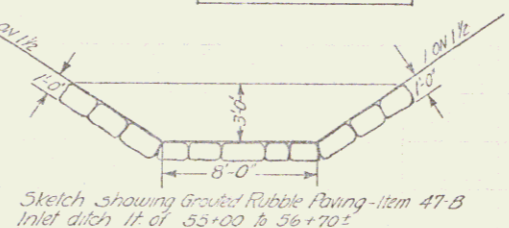
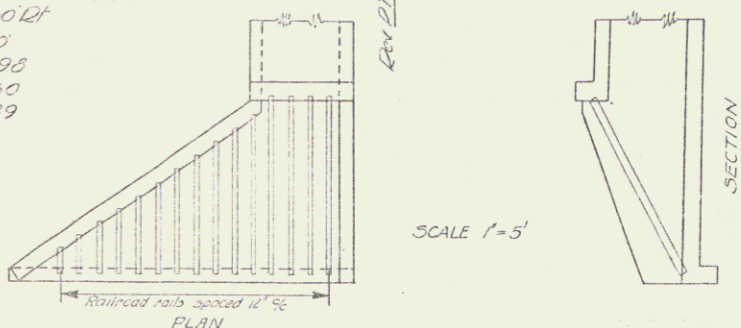
1. Construct temporary bypass for traffic at the approximate location shown on the layout and cross-sections, placing gravel sub-base as shown on cross-sections. Also construct the section of 24" corrugated galvanized metal pipe under the temporary by-pass in line with the procedure set up under Item 3. This work to be paid for as Common Excavation, Item 10-A or 10-B.
2. Excavate and construct 4'x4' RC Box complete. To handle the water from the two 24" CM pipes a temporary opening is to be constructed through the new box at the junction with the railroad culvert.
3. Install the remainder of the 24" corrugated galvanized metal pipe from the inlet of the new RC box to connect with the section of pipe as constructed under item 1, the pipe and necessary trench excavation to be paid for at contract bid prices. The 24" metal pipes are to be laid in and ends plugged with concrete.
4. The construction of necessary excavation and embankments for the completion of the project and placing of base and surface to be completed.
5. After traffic is put over the new location the temporary 24" metal pipe is to be removed and necessary inlet ditch to be constructed as per plans. The 24" metal pipe when removed is to become the property of the site.

STA 51+00
BEGINNING OF F 6 (2) =
STA 51+00 OF FAP 6
REMARKS

Note -- In order that traffic may be maintained during the construction of this project, the excavation of the inlet ditch for the culvert of Sta. 53+57 will not be made until after the new road surface is opened to traffic. The channel excavation then made is to be used on the Fairlee 112 (S) Project.

Note
Engineers Attention is called to grading at toe of fill slope Rt Sta 56+0 to Sta 60+50. See profile below.

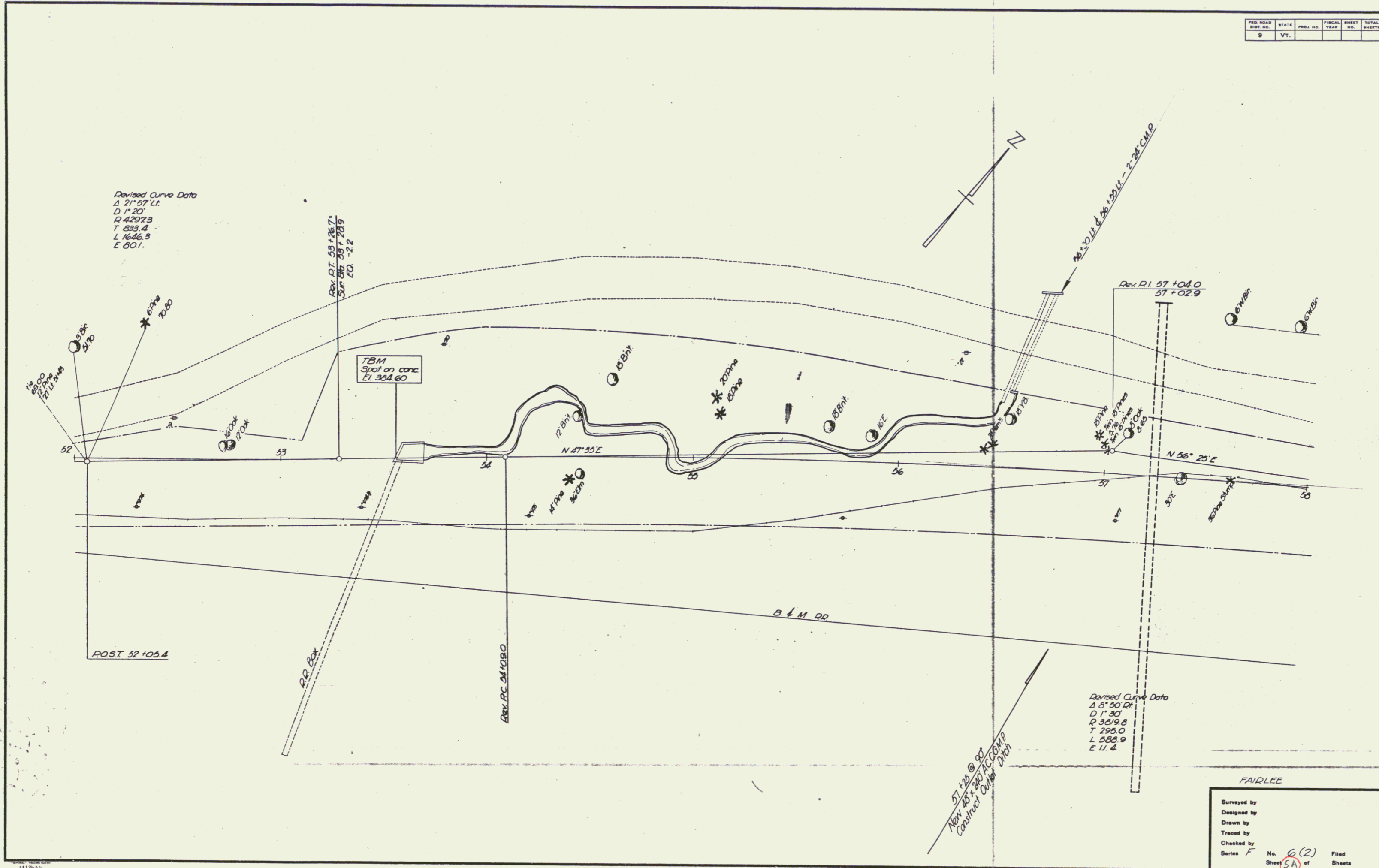
Devised Curve Data
A 6' 50" Lt
B 1' 30"
C 38196
T 2950
L 5889
E 114



B.M. 2 Top of Nut S.W. Cor. Signal Fm. 31 Rt. Sta 51+47 Elev 422.22
B.M. 3 S.I.R. 18" Maple 58 Lt. Sta 55+65 Elev 407.86

F 6 (2) 1944 S
Cemetery
Town of Fairlee

FED. ROAD DIST. NO.	STATE	PROJ. NO.	FISCAL YEAR	SHEET NO.	TOTAL SHEETS
9	VT.				



Surveyed by
 Designed by
 Drawn by
 Traced by
 Checked by
 Series F No. 6(2) Filed
 Sheet 5A of Sheets

