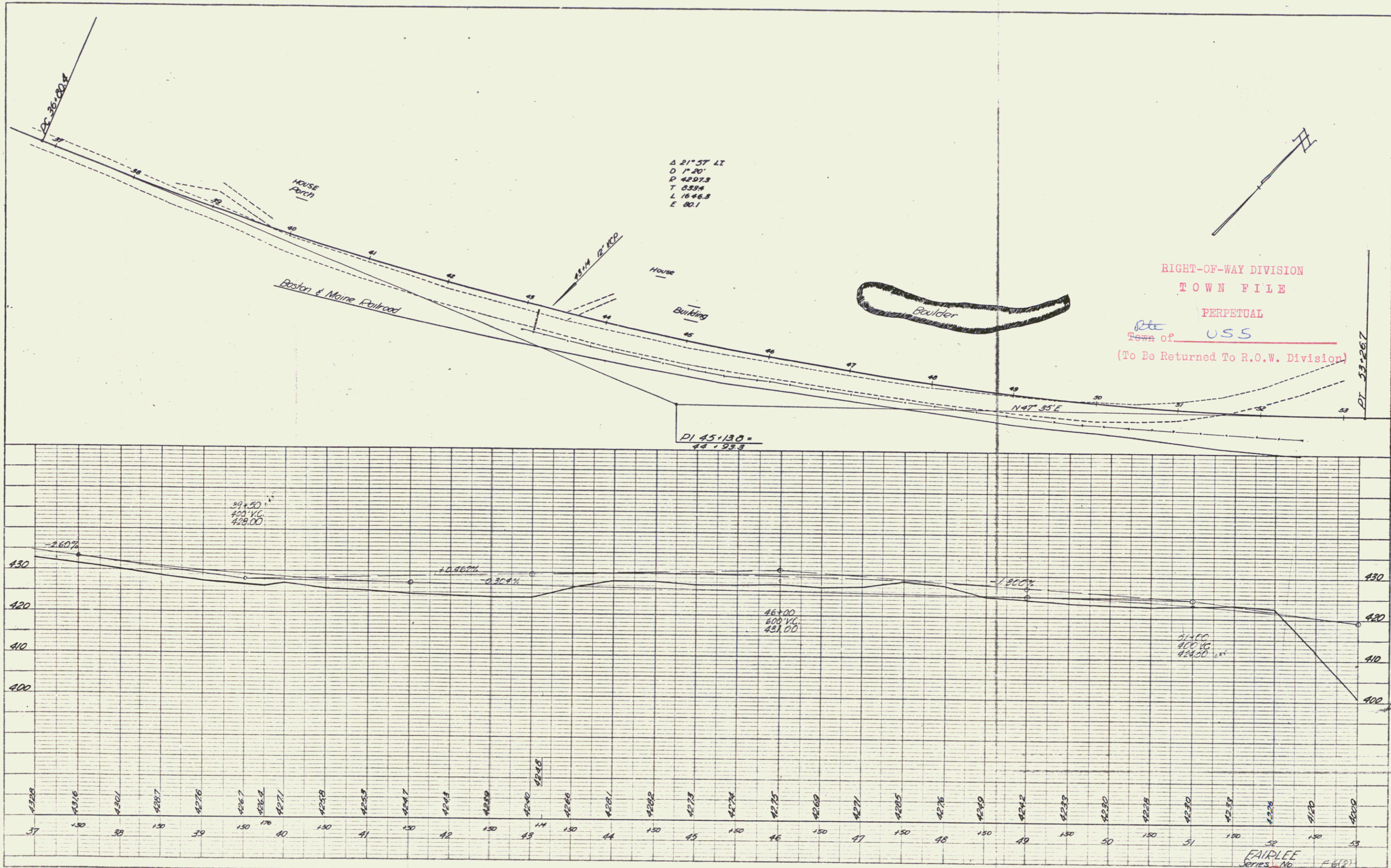


PLAN  
 DRAWN BY: [Signature]  
 CHECKED BY: [Signature]  
 DATE: 12-10-49

PROFILE  
 DRAWN BY: [Signature]  
 CHECKED BY: [Signature]  
 DATE: 12-10-49



RIGHT-OF-WAY DIVISION  
 TOWN FILE  
 PERPETUAL  
 Town of USS  
 (To Be Returned To R.O.W. Division)

PLATE 1 - PLAN - PROFILE OF P.A.R.E. STANDING  
 DESIGNED BY EDGAR G. NEW YORK  
 SCALE: 1" = 40'

FAIRLEE  
 Series No. F-6(2)  
 Sheet 10 of 10