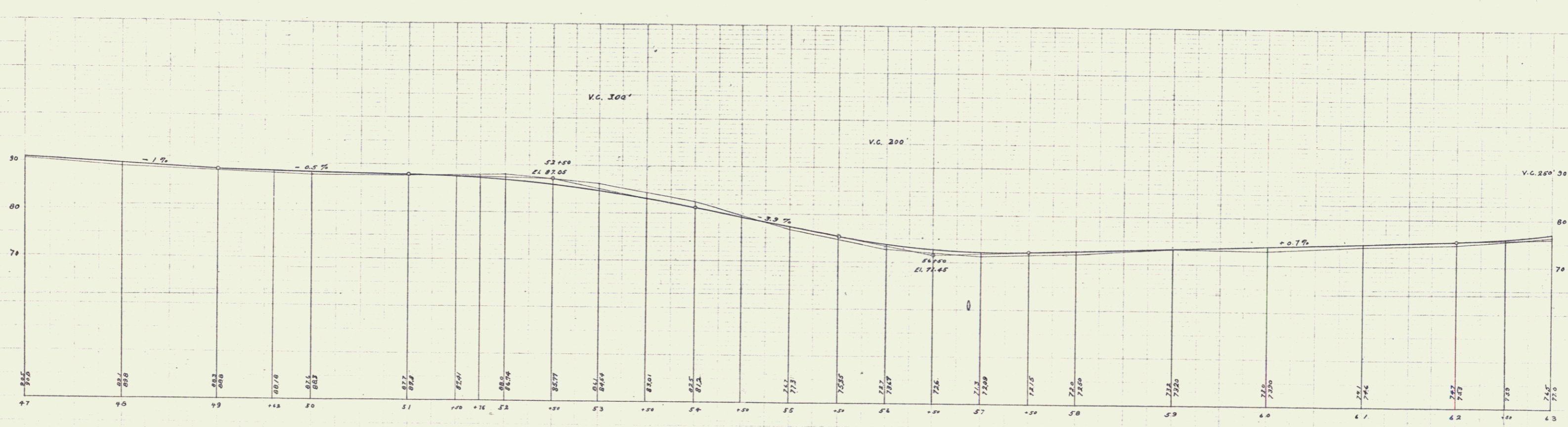
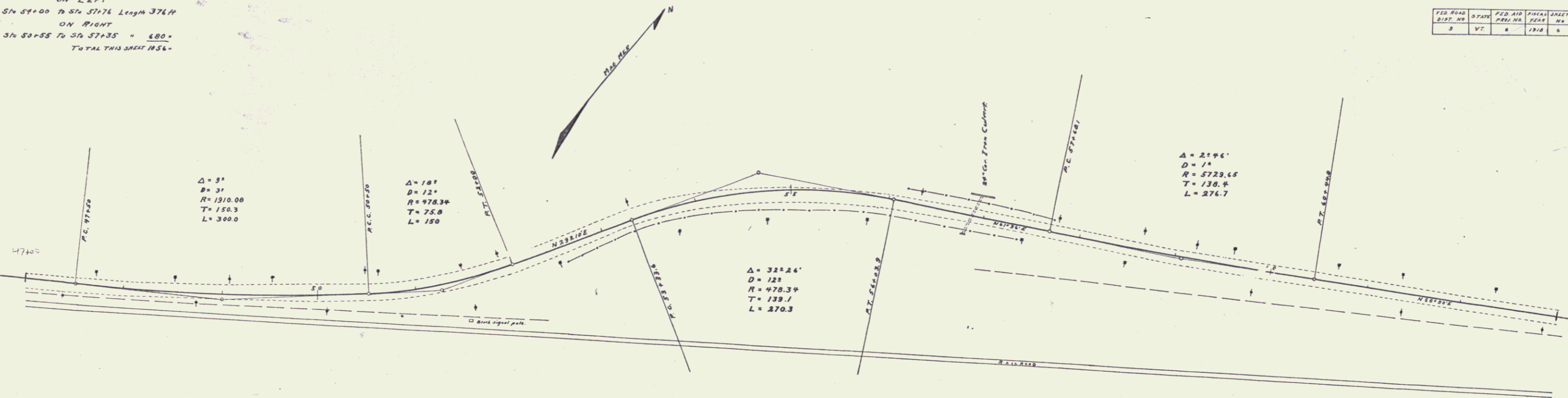


GUARD RAIL REQUIRED
 ON LEFT
 Stn 57+00 to Stn 57+76 Length 376 ft
 ON RIGHT
 Stn 50+55 to Stn 57+35 = 680 ft
 TOTAL THIS SHEET 1056 ft

FED. ROAD DIST. NO.	STATION	FED. AID PROJ. NO.	FINAL SHEET NO.	TOTAL SHEETS
2	VT.	4	1218	6



B.M. Spike in pile opp Stn 50+41 El. 30.24

Series P. No. 6. Filed 1918

5