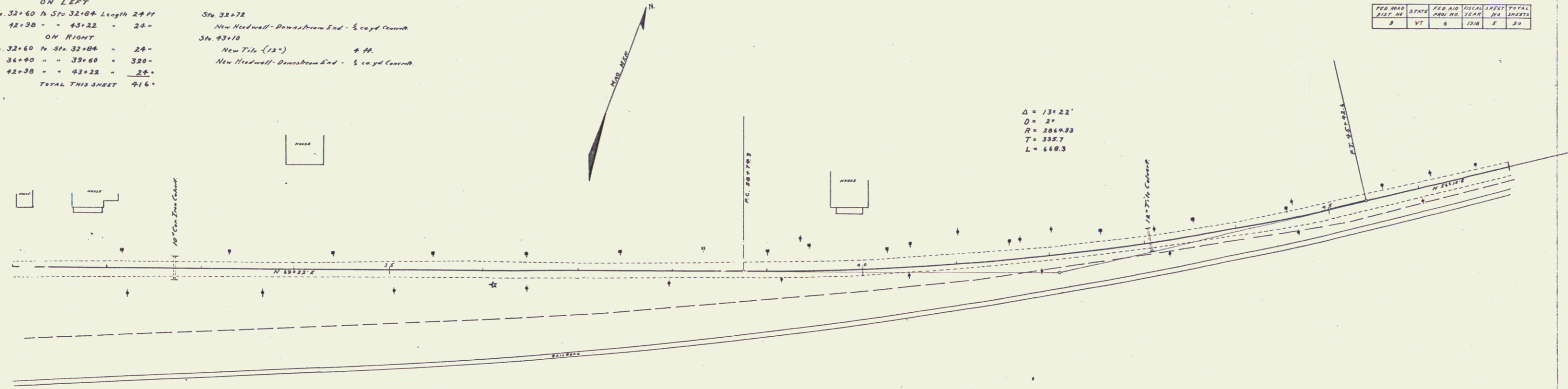


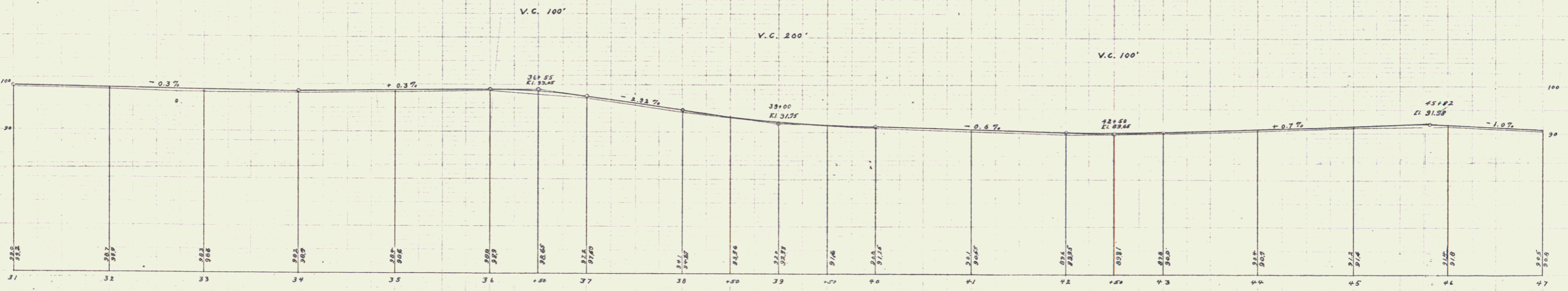
GUARD RAIL REQUIRED
ON LEFT
 Sta. 32+60 to Sta. 32+84 Length 24 ft
 = 42+30 - 43+22 = 24'
ON RIGHT
 Sta. 32+60 to Sta. 32+84 = 24'
 = 34+90 - 39+60 = 320'
 = 42+30 - 43+22 = 24'
TOTAL THIS SHEET 416'

CULVERT REPAIRS REQUIRED
 Sta. 33+78
 New Headwall - Downstream End - 1/2 cypd concrete
 Sta. 43+18
 New Tilt (12") 4 ft.
 New Headwall - Downstream End - 1/2 cypd concrete

| PER. AREA | STAKE | PER. AREA | STAKE | PER. AREA | STAKE |
|-----------|-------|-----------|-------|-----------|-------|
| 3 | VT 6 | 12/18 | 5 | 20 | |



$\Delta = 131.22'$
 $D = 21'$
 $R = 2664.33$
 $T = 338.7$
 $L = 648.3$



B.M. Spike in pole opp Sta 42+12 El 89.92

Series F No. 6. Filed
 3/11/50