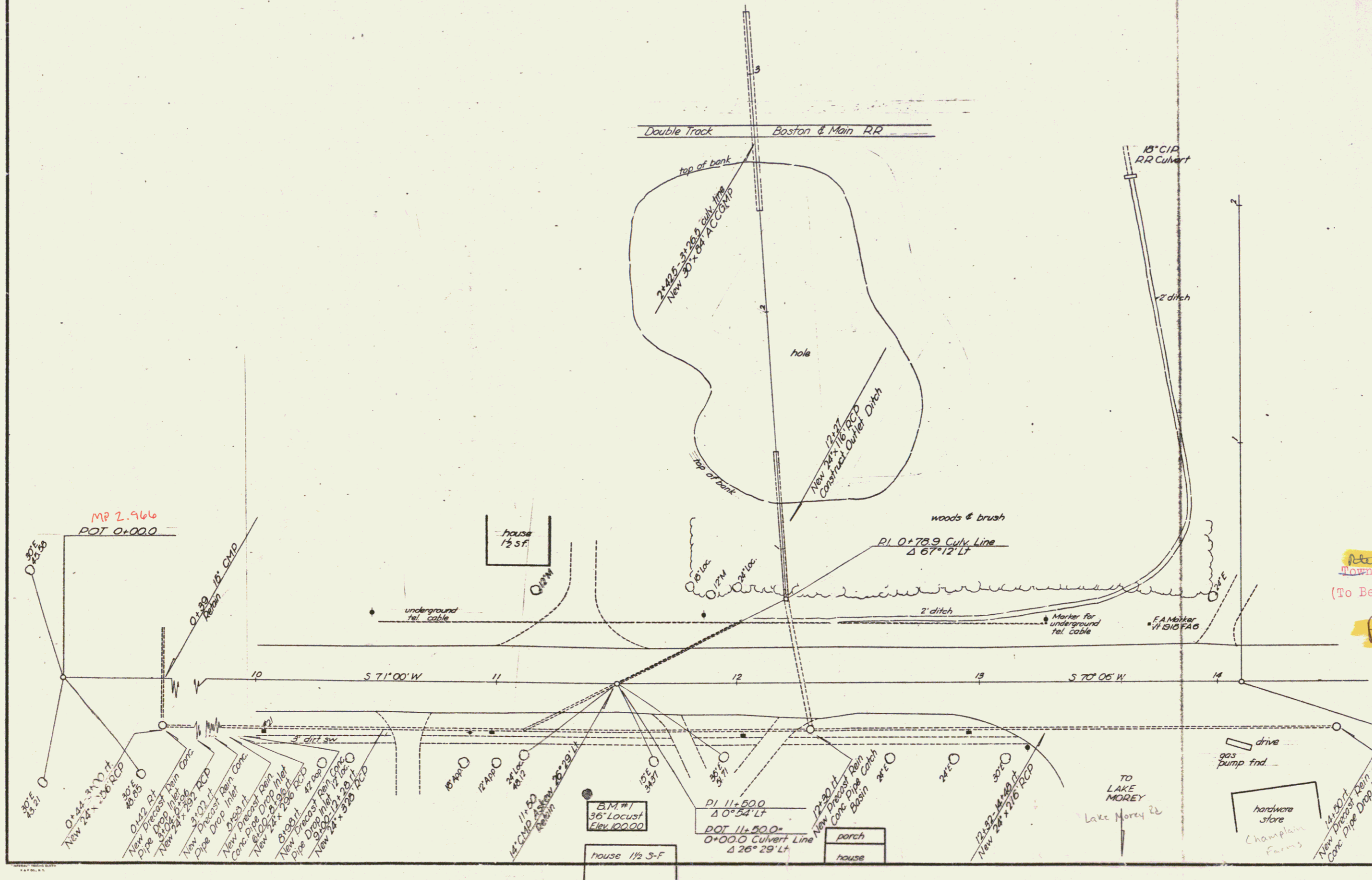


FED. ROAD DIST. NO.	STATE	PROJ. NO.	SHEET NO.	TOTAL SHEETS
9	VT.			



Pin # 992261

Town: Fairlee

RIGHT-OF-WAY DIVISION
TOWN FILE

PERPETUAL
Rte. US 5
Town of US 5
(To Be Returned To R.O.W. Division)

Project: Survey 5/49

51149

MP 2.719
POT 14+100.0
0+00
Δ 90°
FAIRLEE - LAKE MOREY TURN

Surveyed by Foster 5-49
Designed by
Drawn by Jones
Traced by Clark
Checked by
Series No. 1 of 4 Sheets