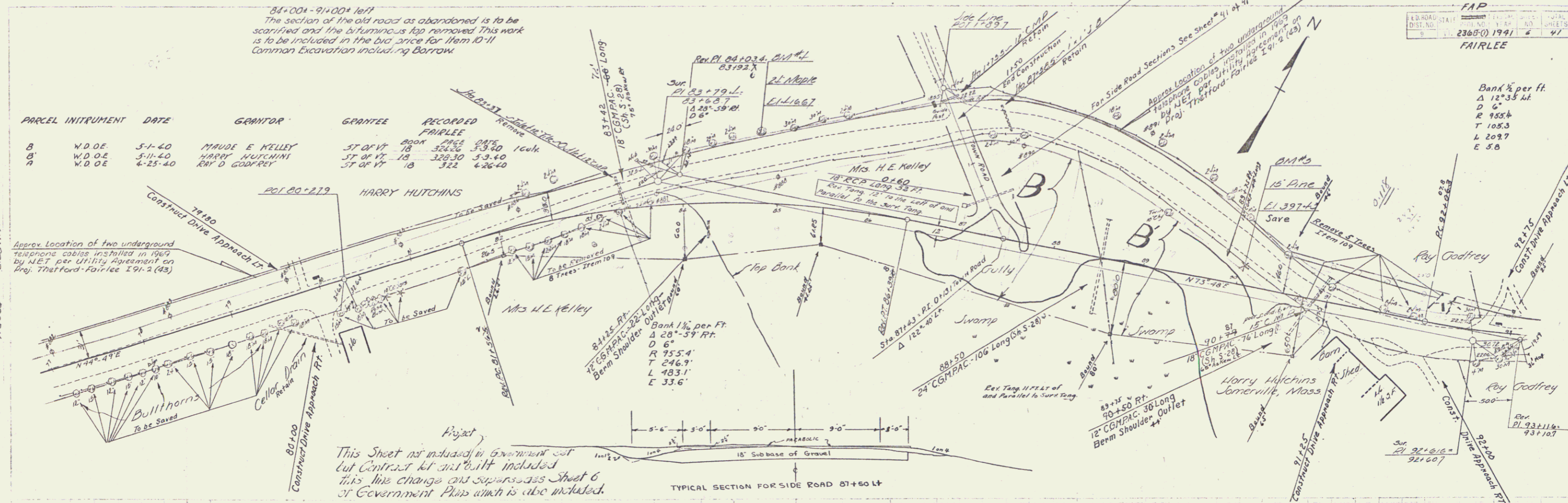


PARCEL	INSTRUMENT	DATE	GRANTOR	GRANTEE	RECORDED	FAIRLEE
8	W.D.O.E.	5-1-40	MAUDE E KELLEY	ST OF VT	18	326.26
8	W.D.O.E.	5-11-40	HARRY HUTCHINS	ST OF VT	18	326.50
8	W.D.O.E.	4-25-40	RAY D GODFREY	ST OF VT	18	322

Approx. Location of two underground telephone cables installed in 1969 by N.E.T. per Utility Agreement on Proj. Thetford-Fairlee 291-2 (43)



This Sheet not included in Government cut but Contract it and built included this line change and supersedes Sheet 6 of Government Plus which is also included.

TYPICAL SECTION FOR SIDE ROAD 87+50 LT



81+75 650 Y.C. 433.55
575' Vision

FAP
236B-1 1941
FAIRLEE

Bank 1/2 per ft.
Δ 12.35 ft.
D 6"
R 955.4
T 105.3
L 209.7
E 5.8