

INDEX OF SHEETS

SHEET NO. 1	TITLE PAGE
2	TYPICAL CROSS-SECTION OF IMPROVEMENT
3	BANKING AND WIDENING TABLES
4-8	PLAN AND PROFILE STA. 0+00-37+75
9-10	DETAILS 7x7 R.C.D. STA. 26+25
11	S-28 PIPE CULVERTS
12	S-30 GUARD RAIL
13	S-31 BOUNDARY MARKERS
14	S-40 BARRICADES, SIGNS, LIGHTS
15	S-41 ROUNDING OF SLOPES
16-17	CROSS SECTIONS

STANDARD STRUCTURE SHEETS APPROVED
 BY THE CHIEF ENGINEER
 S-28 & S-29 JULY 11, 1933
 S-30 AUG 15, 1933
 S-31 JULY 25, 1934

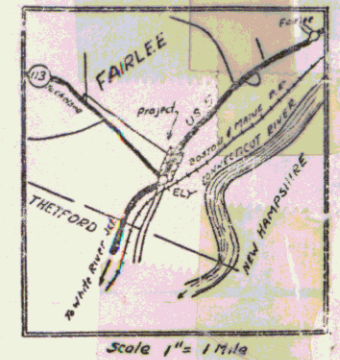
STATE OF VERMONT
 STATE HIGHWAY DEPARTMENT

PLAN AND PROFILE OF PROPOSED
 STATE HIGHWAY

FEDERAL AID PROJECT

TOWN OF FAIRLEE
 BRADFORD NORWICH ROAD

DC & Notes
 Pin # 992259



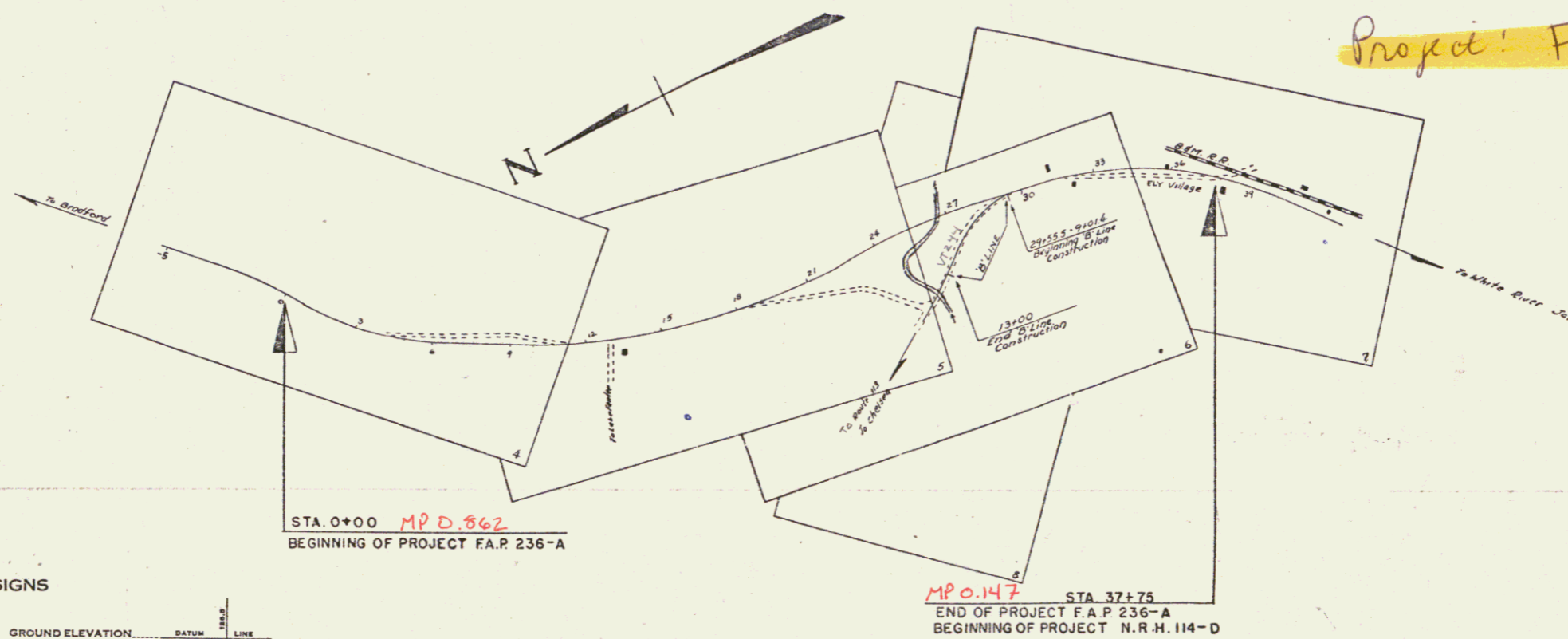
BEGINNING AT A POINT ON ROUTE U.S. 5 0.5 MILES NORTHEASTERLY OF THE INTERSECTION WITH ST. ROUTE 113
 AND EXTENDING SOUTHWESTERLY 0.714 MILES
 LENGTH OF PROJECT 3772.2 FT. = 0.714 MILES.

(To Be Returned to H.O.W. Division)

Perpetual
 Right-of-Way
 U.S. 5

Route: U.S. 5

Project: FAP 236A



APPROVED: *April 3, 1938*
H. C. ...
 SUBMITTED BY ORDER OF THE STATE HIGHWAY BOARD

CONVENTIONAL SIGNS

COUNTY LINE	GROUND ELEVATION
TOWN LINE	FENCE LINE
STONE WALL	UNFENCED PROPERTY
GUARD RAIL	TRAVELED WAY
RAILROAD	RETAINING WALL
CENTER LINE	SURVEY LINE
CULVERT	DROP INLET
TROLLEY POLE	POWER POLE
TELEPHONE POLE	TREES
HEDGE	

CURVE DATA

DEFLECTION ANGLE	Δ
DEGREE OF CURVE	D
RADIUS OF CURVE	R
TANGENT DISTANCE	T
LENGTH OF CURVE	L
EXTERNAL DISTANCE	E
POINT OF INTERSECTION	P. I.
POINT OF CURVE	P. C.
POINT OF TANGENT	P. T.
POINT ON TANGENT	P. O. T.

SCALES

TITLE	1" = 300'
TYPICAL	1" = 2'
PLAN	1" = 50'
PROFILE	1" = 10'
CROSS	

These plans are subject to such revisions as may be required by the Bureau of Public Roads or the Commissioner of Highways. Construction is to be carried on in accordance with the plans and Standard Road & Bridge Specifications of 1936 as approved December 29, 1936, by the Bureau of Public Roads including all subsequent approved revisions and such revised specifications and special provisions as are submitted with the plans.

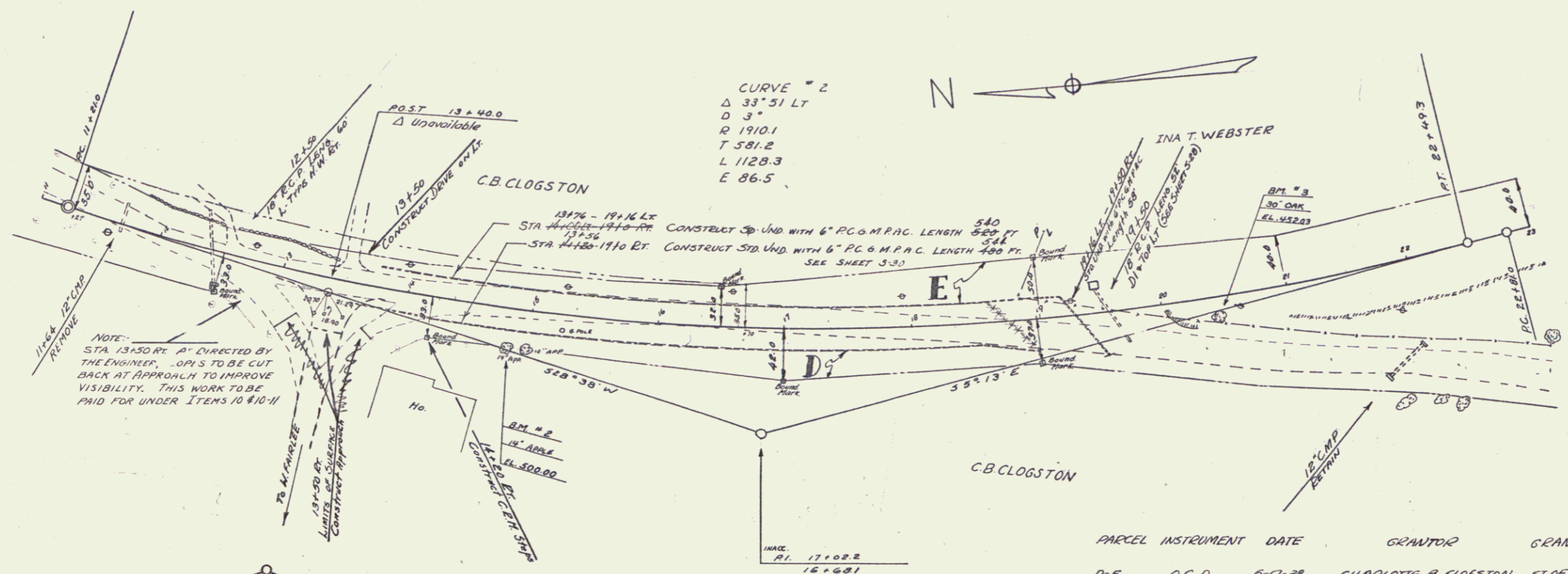
APPROVED: *Nov 27, 1938*
...
 DISTRICT ENGINEER

APPROVED: *...*
 DISTRICT ENGINEER

SERIES FAP No. 236A FILED
 SHEET 1 OF 42

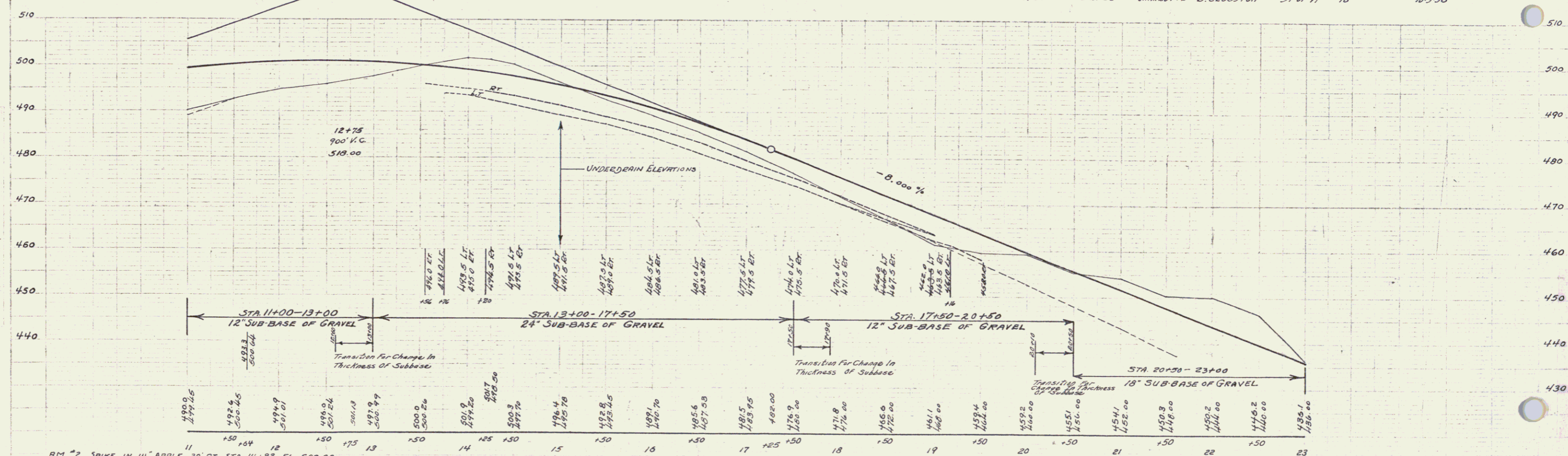
U.S. 5

DIST. ...

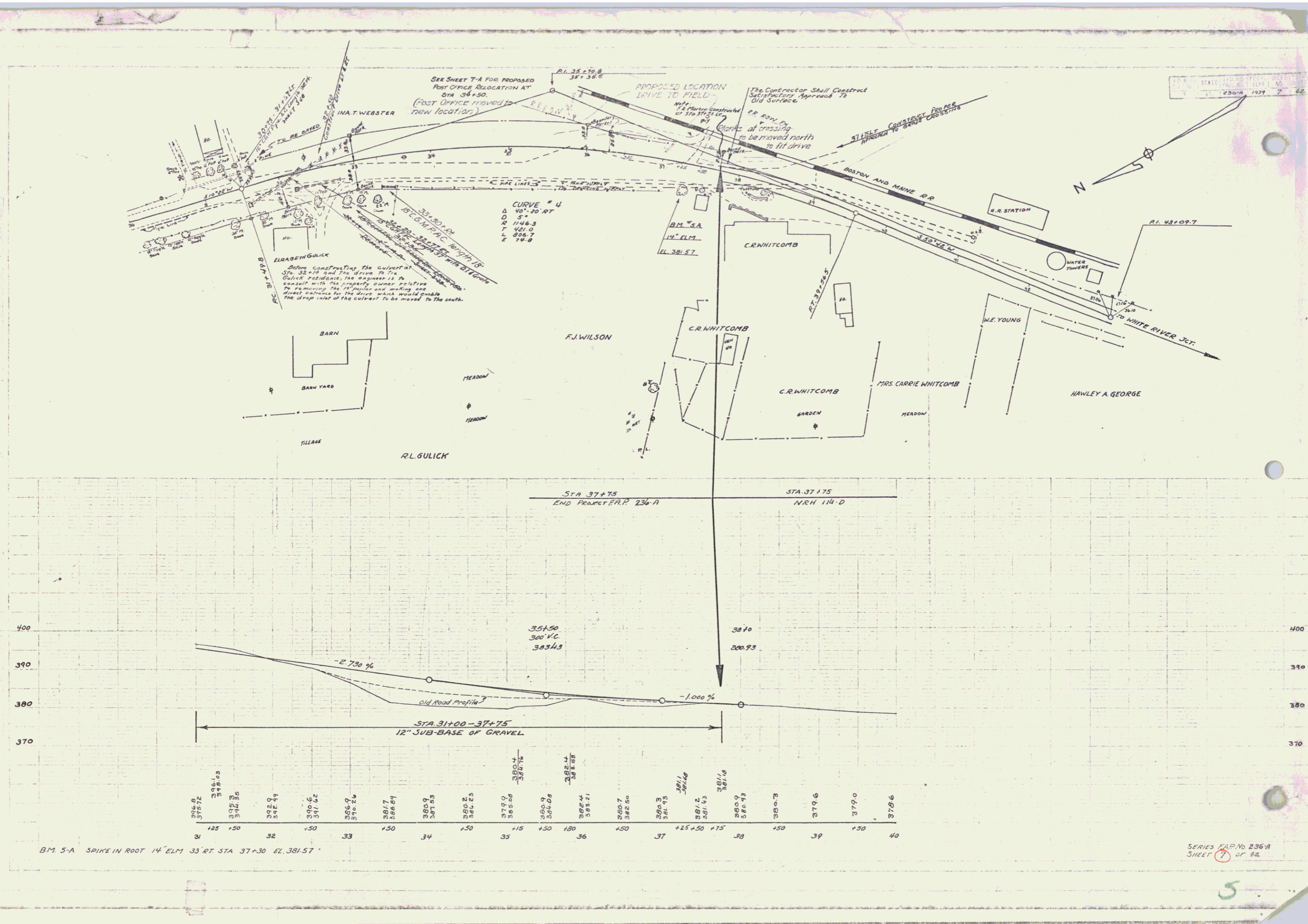


NOTE: STA 13+50 RE. P' DIRECTED BY THE ENGINEER. OP'S TO BE CUT BACK AT APPROACH TO IMPROVE VISIBILITY. THIS WORK TO BE PAID FOR UNDER ITEMS 10 #10-11

PARCEL	INSTRUMENT	DATE	GRANTOR	GRANTEE	RECORDED	REMARKS
D-E	Q.C.D.	5-17-38	CHARLOTTE B. CLOGSTON	ST. OF VT.	BOOK PAGE DATE	
A	Q.C.D.	9-27-38	CHARLOTTE B. CLOGSTON	ST. OF VT.	18 168-9-170 5-24-38	18 10-3-38

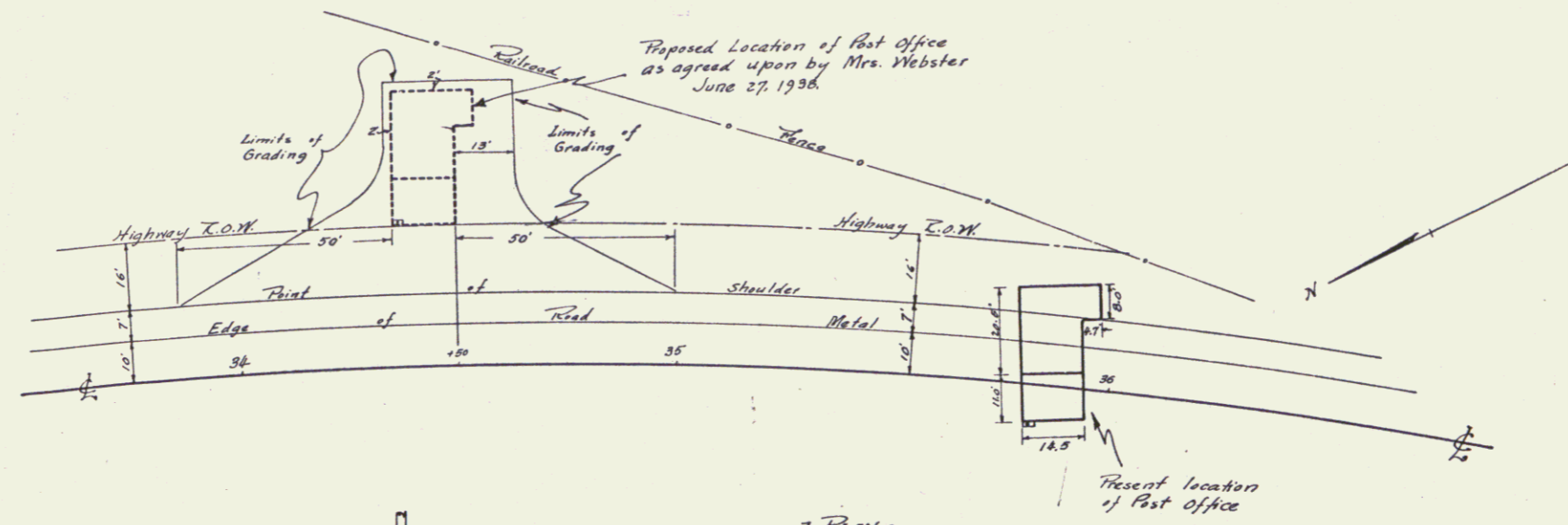


BM #2 SPIKE IN 14' APPLE 30' RT STA 14+02 EL 500.00
 BM #3 SPIKE IN ROOT 30' OAK 15' RT STA 20+40 EL 452.03

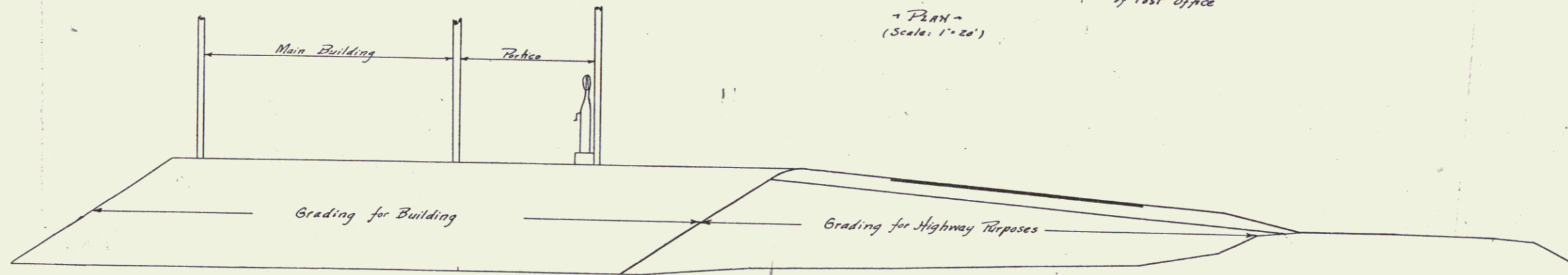


BM. 5-A SPIKE IN ROOT 14" ELM 33' RT STA 37+30 EL. 381.57

5



PLAN -
(Scale: 1" = 20')



Section at Sta. 34+50
(Scale: 1" = 5')

FAIRLEE - 296-A
(Post office relocation)
June 26, 1936
SHEET 7-A of 42.

7A

6

