

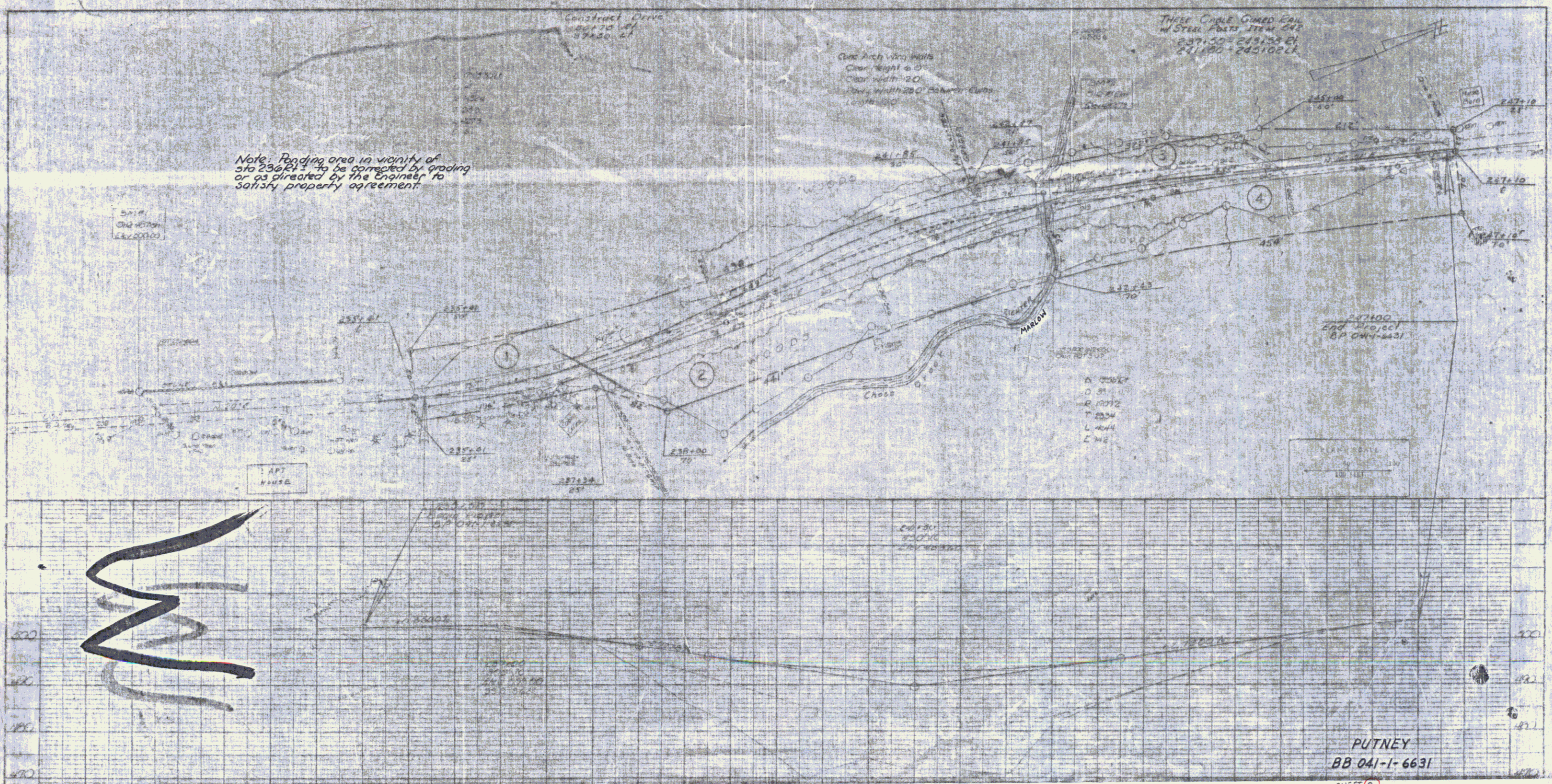
POOR ORIGINAL COPY

Note: Ponding area in vicinity of  
c/s 236+81 to be corrected by grading  
or as directed by the Engineer to  
satisfy property agreement.

Construct Drive  
234+70 to 234+80

One Arch Wing Walls  
Clear Height 6'-0"  
Clear Width 20'-0"  
Arch Width 20'-0" (Center to Center)

Three Cable Girded Box  
W/ Steel Deck Item 642  
237+50 - 243+50 E4  
241+00 - 243+00 L1



PUTNEY  
BB 041-1-6631

SHEET 2

2