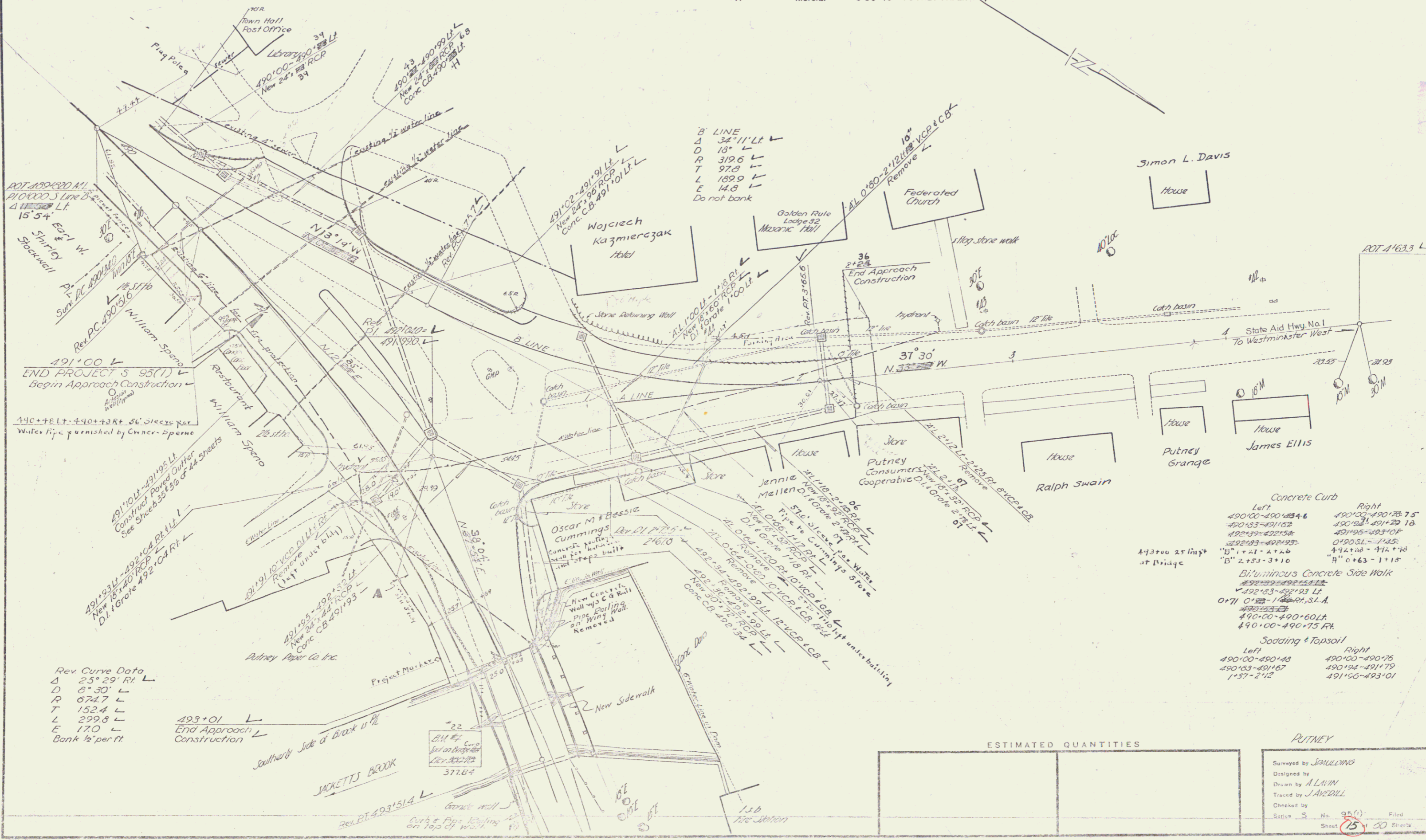


3- Cable Guard Rail  
493+00 Lt 18'

CONSTRUCT APPROACH  
490+65 Lt L  
"B" Line 4+25 - 2+53

CONSTRUCT DRIVES  
490+83 Rt L  
491+03 Rt L  
"A" Line 0+90 Lt L

PARCEL	INSTRUMENT	DATE	GRANTOR	GRANTEE	BOOK	RECORDED PUTNEY	DATE	REMARKS
A	W.D.O.E.	8-30-46	PUTNEY PAPER CO., INC.	ST. OF VT.	30	267-268	9-3-46	



Rev Curve Data  
 Δ 25° 29' Rt L  
 D 87.30 L  
 R 672.7 L  
 T 152.4 L  
 L 299.8 L  
 E 17.0 L  
 Bank 1/2 per ft

Concrete Curb  
 Left 490+00-490+45 4-6  
 490+83-491+62  
 492+39-492+52  
 492+83-492+95  
 "D" 1+41 - 2+25  
 "B" 2+53 - 3+10

Right 490+00-490+75 7-5  
 490+82-491+70 18  
 491+95-493+00  
 0+90 SL - 7-25  
 4+14 W - 4+25  
 "H" 0+63 - 1+15

Bituminous Concrete Side Walk  
 492+83-492+95  
 492+83-492+83 Lt  
 0+71 0+53 - 1+15 R.H.S.L.A.

Sodding & Topsoil  
 Left 490+00-490+45  
 490+83-491+67  
 1+57-2+42

Right 490+45-490+75  
 490+84-491+79  
 491+65-493+01

ESTIMATED QUANTITIES


PUTNEY

Surveyed by J. BUILDING  
 Designed by A. LAVIN  
 Traced by J. AVEDILL  
 Checked by  
 Status S No. 95(1) Filed  
 Sheet 25 of 20 Sheets