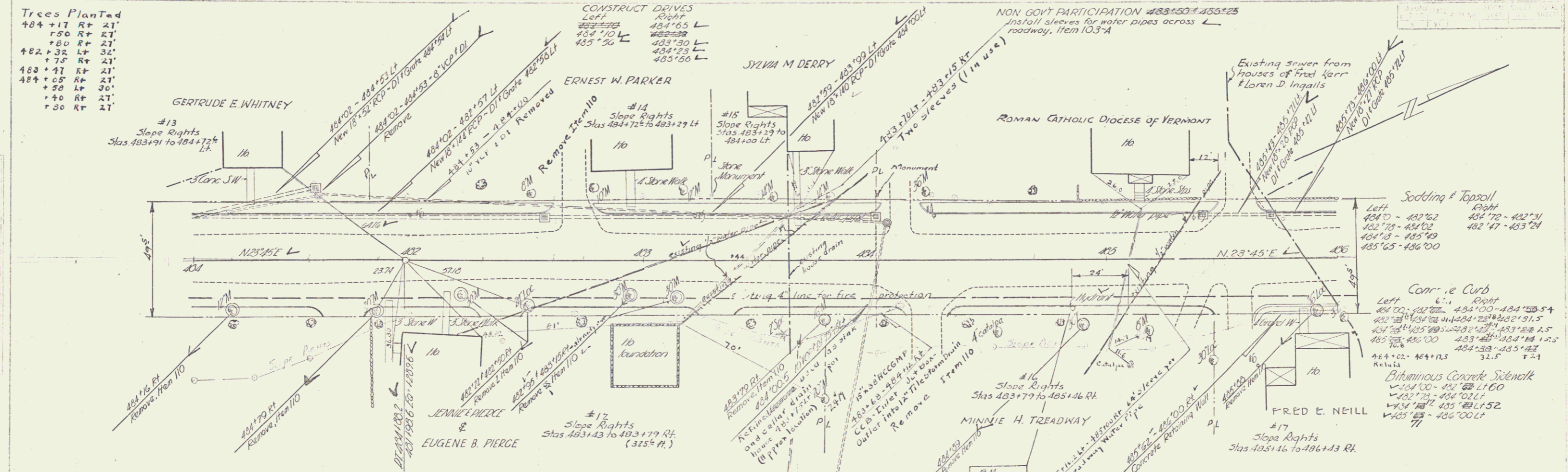


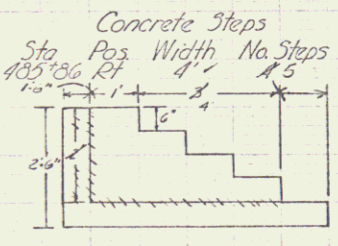
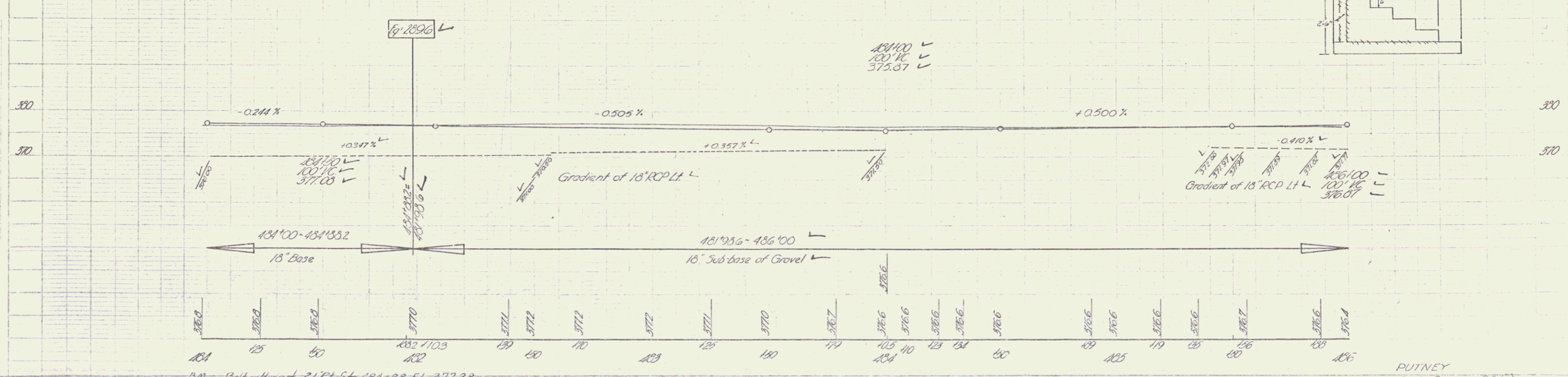
**Trees Planted**  
 +84+17 Rt 21'  
 +80 Rt 21'  
 +80 Rt 21'  
 +82+32 Lt 32'  
 +75 Rt 21'  
 488+47 Rt 21'  
 484+05 Rt 21'  
 +40 Rt 21'  
 +30 Rt 21'

**CONSTRUCT DRIVES**  
 Left Right  
 484+10 484+65  
 485+20 485+30  
 484+23 485+50

**NON GOV'T PARTICIPATION** 483+50 to 485+25  
 Install sleeves for water pipes across roadway, Item 103-A



PARCEL	INSTRUMENT	DATE	GRANTOR	GRANTEE	RECORDED TOWN OF	Book	Page	Date	REMARKS
14	W.D.O.E.	5-10-54	ERNEST W. PARKER	ST OF VT. PUTNEY	33	8	5-14-54		
15	W.D.O.E.	5-11-54	SYLVIA M. DERRY	ST OF VT. PUTNEY	33	13	5-14-54		
16	W.D.O.E.	5-10-54	MINNIE H. TREADWAY	ST OF VT. PUTNEY	33	5	5-14-54		
17	W.D.O.E.	5-10-54	FRED E. NEILL	ST OF VT. PUTNEY	33	6	5-14-54	See also Sheet 14	



PUTNEY  
 Proj. No. 95(1)  
 Sheet 13 of 50