

CONCRETE CURB
 LT 23
 483+28 - 484+00
 479+00 - 481+00
 481+85.5 - 481+36.5
 483+38 - 484+00
 RT 15
 480+43 - 481+45
 479+00 - 481+88
 482+28 - 483+28.21
 483+38 - 484+00
 1177

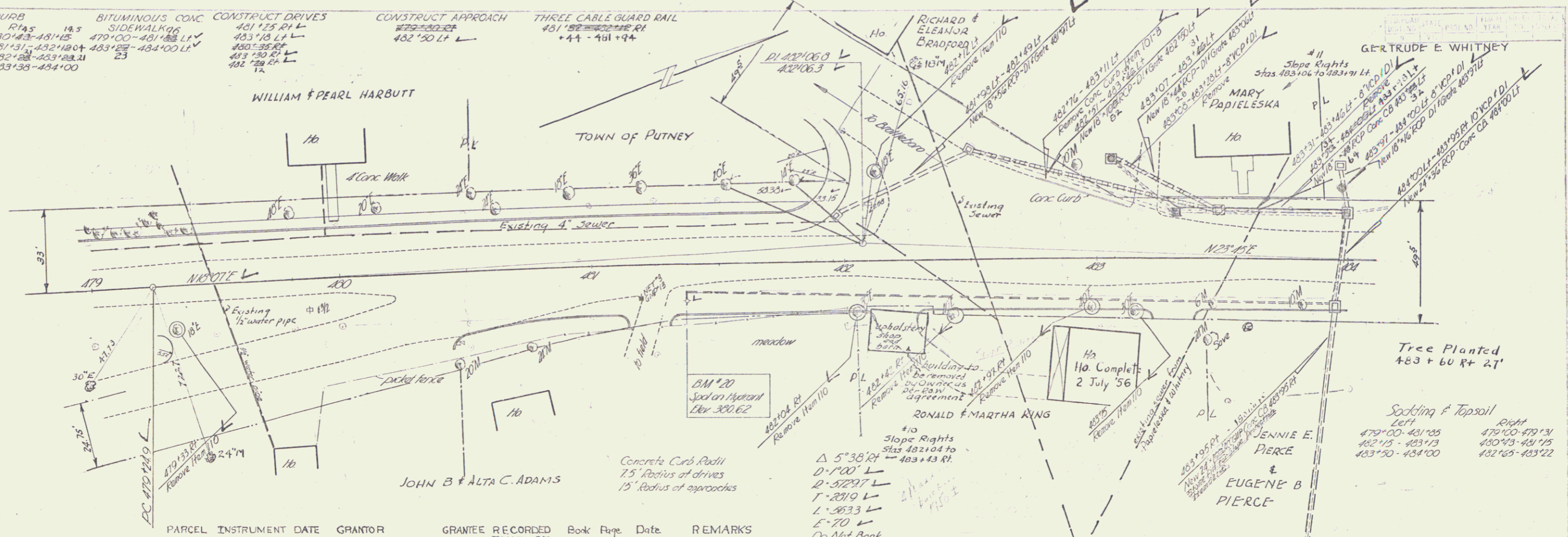
BITUMINOUS CONC
 SIDEWALK 06
 481+25 RT L
 483+18 LT L
 480+38 RT L
 483+30 RT L
 482+78 RT L

CONSTRUCT DRIVES
 481+25 RT L
 483+18 LT L
 480+38 RT L
 483+30 RT L
 482+78 RT L

CONSTRUCT APPROACH
 482+50 LT L

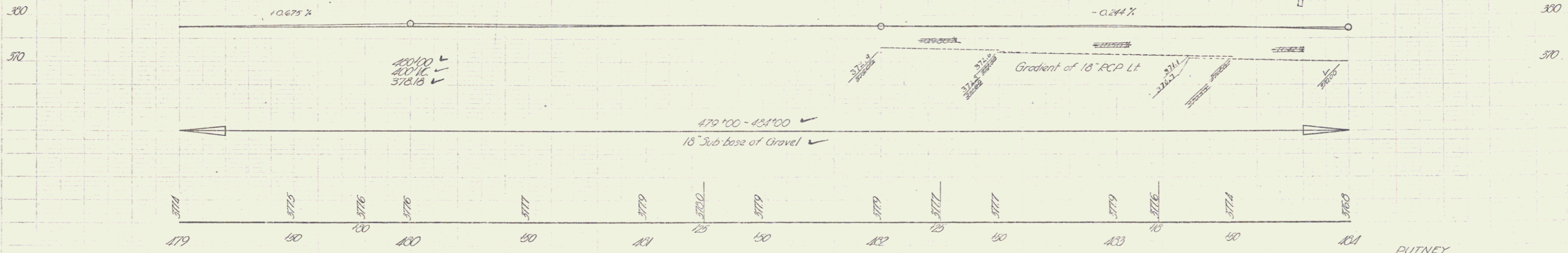
THREE CABLE GUARD RAIL
 481+52 - 482+12 RT
 +44 - 461 +94

CANTILE



PARCEL	INSTRUMENT	DATE	GRANTOR	GRANTEE	RECORDED	Book	Page	Date	REMARKS
10	W.D.O.E.	5-11-54	RONALD A. and MARTHA R. KING	ST. OF VT. PUTNEY	33	11	5-14-54		
11	W.D.O.E.	5-11-54	MARY PAPIELSKA and JENNIE PIERCE	ST. OF VT. PUTNEY	33	10	5-14-54		
12	W.D.O.E.	5-11-54	EUGENE B. PIERCE	ST. OF VT. PUTNEY	33	53-54	6-30-54	See also Sheet 13	
13	W.D.O.E.	5-10-54	GERTRUDE E. WHITNEY	ST. OF VT. PUTNEY	33	7	5-14-54	See also Sheet 13	

Control of section of former U.S. Route #5 between the Dummerston - Putney Town Line and Sta. 482+50, 11.33 ft. of Putney S 95(1) relinquished to Town of Putney. Recorded - Special File of Rt. #5, January 11, 1956. Putney Town Clerk's Office.



BM 20 Spot on Top of Hydrant 1931 R of Sta 481+87.5 Elev 380.62

PUTNEY
 Proj. S - No. 95(1)
 Sheet 12 of 50