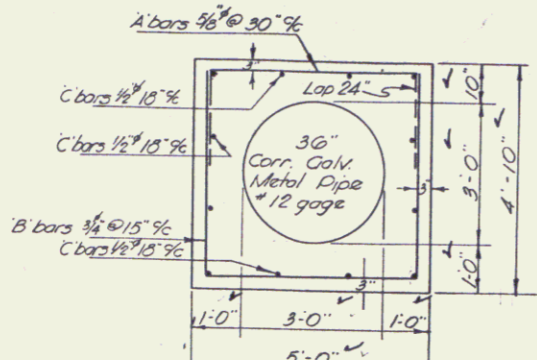


THREE CABLE GUARD RAIL w/ STEEL POSTS
 447+06-447+5+ ~~447+10-447+20 RT~~
 452+91-454+19 ~~452+104-453+28 RT~~
 454+98-457+70 ~~454+102-457+32 LT~~
 455+16-457+72 ~~455+14-457+32 RT~~

CONSTRUCT DRIVES
 #18-150 RT
 #43-150 RT
 447+34-449+20 RT
 452+50 RT
 452+35 LT



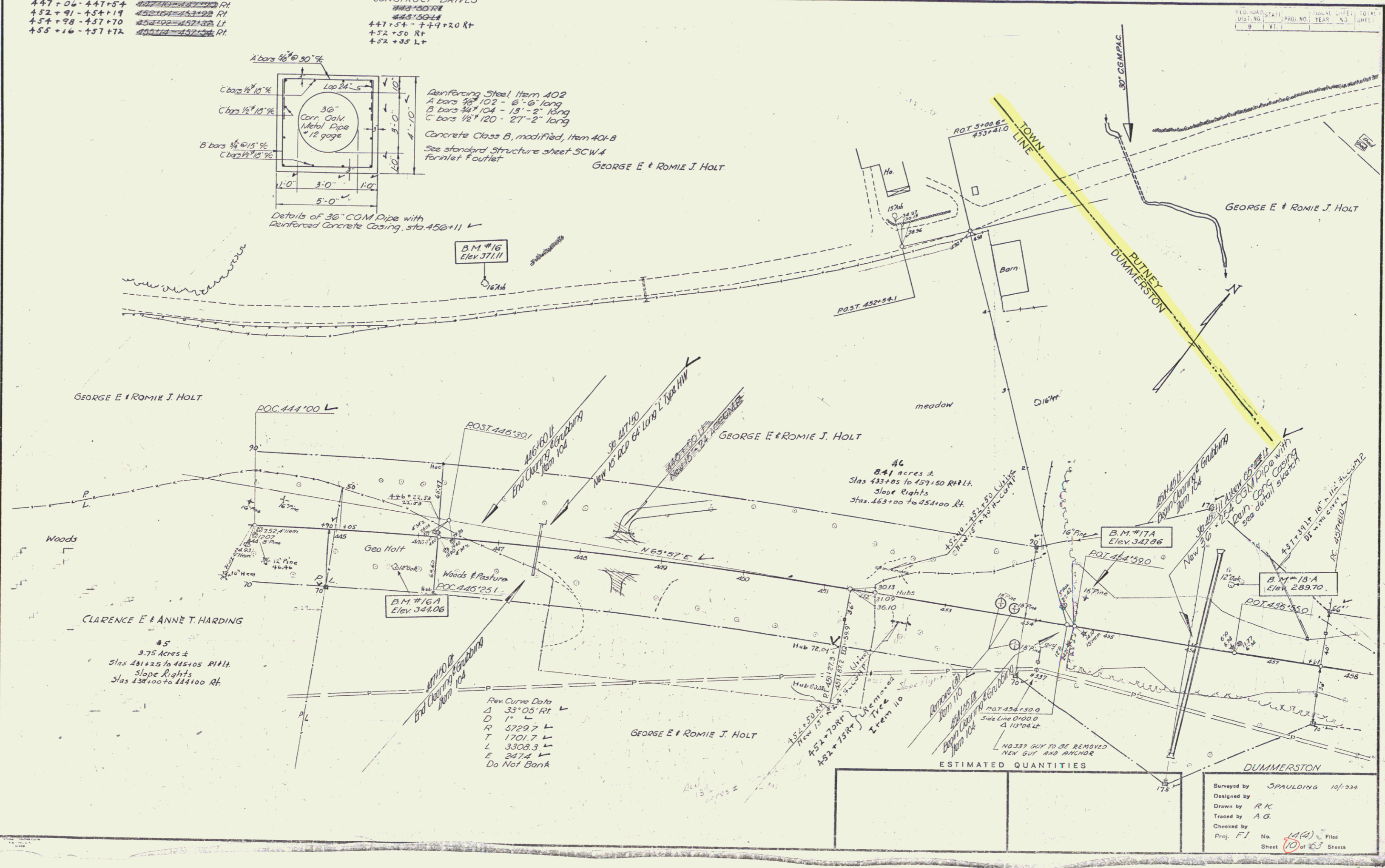
Reinforcing Steel Item 402
 A bars 3/8" 102" - 6'-6" long
 B bars 3/8" 104" - 13'-2" long
 C bars 1/2" 120" - 27'-2" long
 Concrete Class B, modified, Item 401-B
 See standard structure sheet SCW-4
 Formlet Poutlet

GEORGE E + ROMIE J. HOLT

Details of 36" CGM Pipe with Reinforced Concrete Casing, sta. 456+11

B.M. #16
 Elev. 371.11

STATE	PROJ. NO.	YEAR	SHEET
VT.			



GEORGE E + ROMIE J. HOLT

GEORGE E + ROMIE J. HOLT

CLARENCE E + ANNE T. HARDING

45
 3.75 Acres ±
 Stas 481+25 to 485+05 R+L+L
 Slope Rights
 Stas 438+00 to 444+00 Rt.

Rev. Curve Data
 A 33°05' Rt
 D 11'
 R 5729.7 L
 T 1701.7 L
 L 3308.3 L
 E 247.4 L
 Do Not Bank

GEORGE E + ROMIE J. HOLT

ESTIMATED QUANTITIES

DUMMERSTON

Surveyed by SPAULDING 10/234
 Designed by
 Drawn by RK
 Traced by A.G.
 Checked by
 Proj. FI No. 10(2) Filed
 Sheet 10 of 63 Sheets

5