

Removal & Resetting
Cable Guard Rail
408+75 - 410+19 Rt

REMOVAL & DISPOSAL OF
PRESENT GUARD RAIL
414+20 - 415+00 Lt
~~414+20 - 415+00 Lt~~
414+20 - 414+70 Lt

THREE CABLE GUARD RAIL W/ STEEL POSTS
410+19 - 411+70
410+52 - 412+20
413+80 - 414+72

CONSTRUCT DRIVES
413+50 Rt L
414+43 Rt L

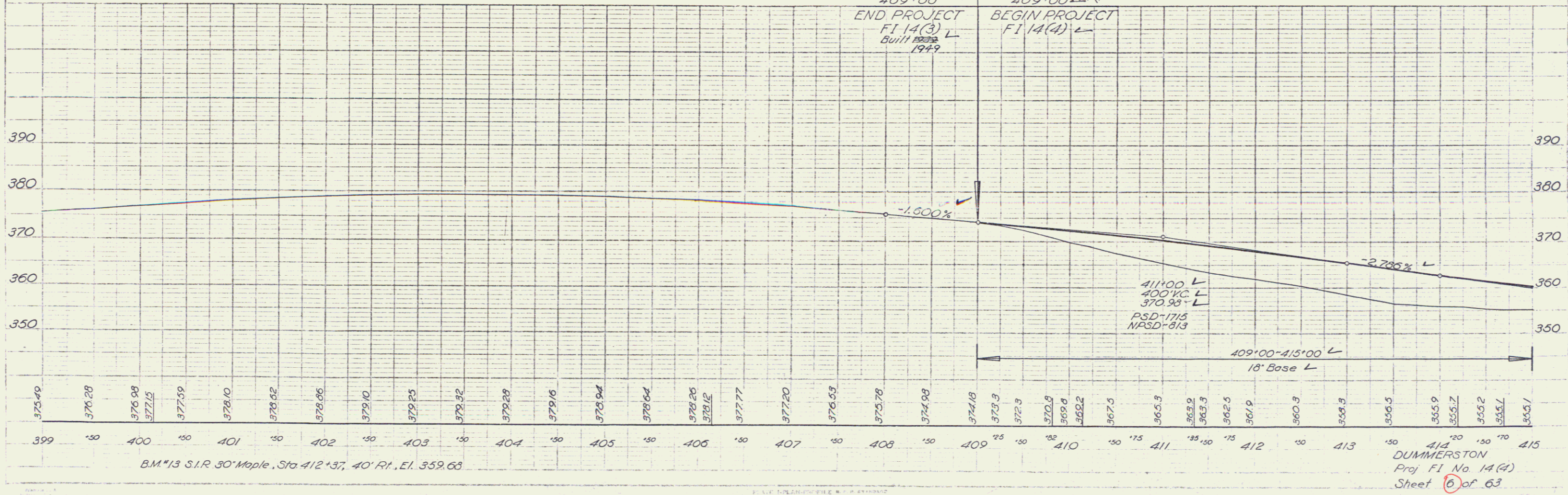
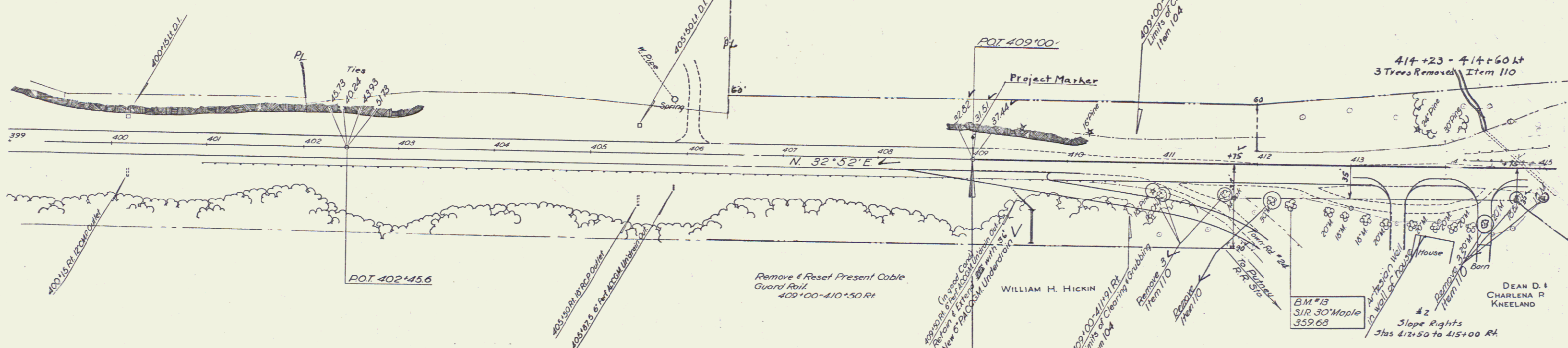
CONSTRUCT APPROACH
409+00 - 412+00 Rt L

SEEDING & TOPSOIL
412+50 - 413+35 Rt
413+63 - 414+23 Rt
414+53 - 415+00 Rt

PARCEL INSTRUMENT DATE GRANTOR GRANTEE RECORDED Book Page Date REMARKS
TOWN OF

1 COND. 3-19-54 WILLIAM H. HICKIN ST. OF VT. DUMMERSTON 35 4-9 3-22-54 See report and notice of heaving & sheet 7

2 W. D. O. E. 5-11-54 CHARLENA P. KNEELAND ST. OF VT. DUMMERSTON 35 48 6-4-54 See also Sheet 7



BM#13 S.I.R. 30' Maple, Sta 412+37, 40' Rt., E.I. 359.68

DUMMERSTON
Proj FI No. 14(4)
Sheet 6 of 63

2