

INDEX OF SHEETS

SHEET NO.	TITLE PAGE
1	TYPICAL CROSS-SECTION OF IMPROVEMENT (BITUMINOUS CONCRETE PAVEMENT)
2	QUANTITY SHEET (ITEMS)
3	QUANTITY SHEET (DRAINAGE)
4	PLAN AND PROFILE SHEETS
5	BRIDGE STANDARD SHEET 58-5A-56 (ALUMINUM RAIL)
6	BRIDGE STANDARD SHEET 58-20-56 (BRIDGE DETAILS)
7	BRIDGE STANDARD SHEET 58-30-56
8	ROADWAY STANDARD SHEET RS 56-1 (DRAINAGE TABLES)
9	ROADWAY STANDARD SHEET RS 56-2 (DRAINAGE TABLES)
10	ROADWAY STANDARD SHEET RS 56-3 (PLANK GUARD RAIL & MARKERS)
11	ROADWAY STANDARD SHEET RS 56-4 (DRAINAGE)
12	ROADWAY STANDARD SHEET RS 56-5 (CURB & SIDEWALK)
13	ROADWAY STANDARD SHEET RS 56-6 (TYPICAL GUARDING)
14	ROADWAY STANDARD SHEET RS 56-7 (CONCRETE CATCH BASINS)
15	ROADWAY STANDARD SHEET RS 56-8 (BARRICADES, SIGNS, & LIGHTS)
16	ROADWAY STANDARD SHEET RS 56-9 (PANEL TYPE GUARD RAIL)
17	ROADWAY STANDARD SHEET RS 57-1 (ENTRANCE & EXIT TERMINALS)
18	ROADWAY STANDARD SHEET RS 57-2 (DIMENSIONAL ISLAND, ETC.)
19	ROADWAY STANDARD SHEET RS 57-3 (REFLECTORIZED SIGNS)
20	ROADWAY STANDARD SHEET RS 57-4 (PLYWOOD SIGNS, DETAILS)
21	TRAFFIC SIGN SUMMARY SHEET
22	TRAFFIC SIGN LOCATION PLAN
23	TRAFFIC SIGNALS, CONSTRUCTION DETAIL
24	TRAFFIC SIGNALS, LOCATION
25	TRAFFIC SIGNALS, DIMENSIONAL INFORMATION
26	BRIDGE SHEET, PRELIMINARY INFORMATION
27	BRIDGE SHEET, ADJUSTMENTS 1 & 2
28	BRIDGE SHEET, SUPERSTRUCTURE
29	BRIDGE SHEET, RAILINGS DETAILS
30	BRIDGE SHEET, STEEL SCHEDULE
31-39	CROSS SECTIONS

STATE OF VERMONT
DEPARTMENT OF HIGHWAYS
PROPOSED IMPROVEMENT

TOWN OF BRATTLEBORO
COUNTY OF WINDHAM
U.S. ROUTE 5 & VT. ROUTE 9
BRATTLEBORO-BELLOWS FALLS ROAD

Pin# 99R250

BEGINNING AT A POINT 902 FEET SOUTH OF THE U.S. ROUTE 5 AND VT. ROUTE #9 INTERSECTION, AND PROCEEDING NORTHERLY 3521.2 FEET TO A POINT 2619.2 FEET NORTH OF THE U.S. ROUTE 5 AND VT. ROUTE #9 INTERSECTION.

LENGTH OF ROADWAY 3487.2 FEET 0.660 MILES ✓
LENGTH OF BRIDGE 34.0 FEET 0.006 MILES ✓
LENGTH OF PROJECT 3521.2 FEET 0.666 MILES ✓

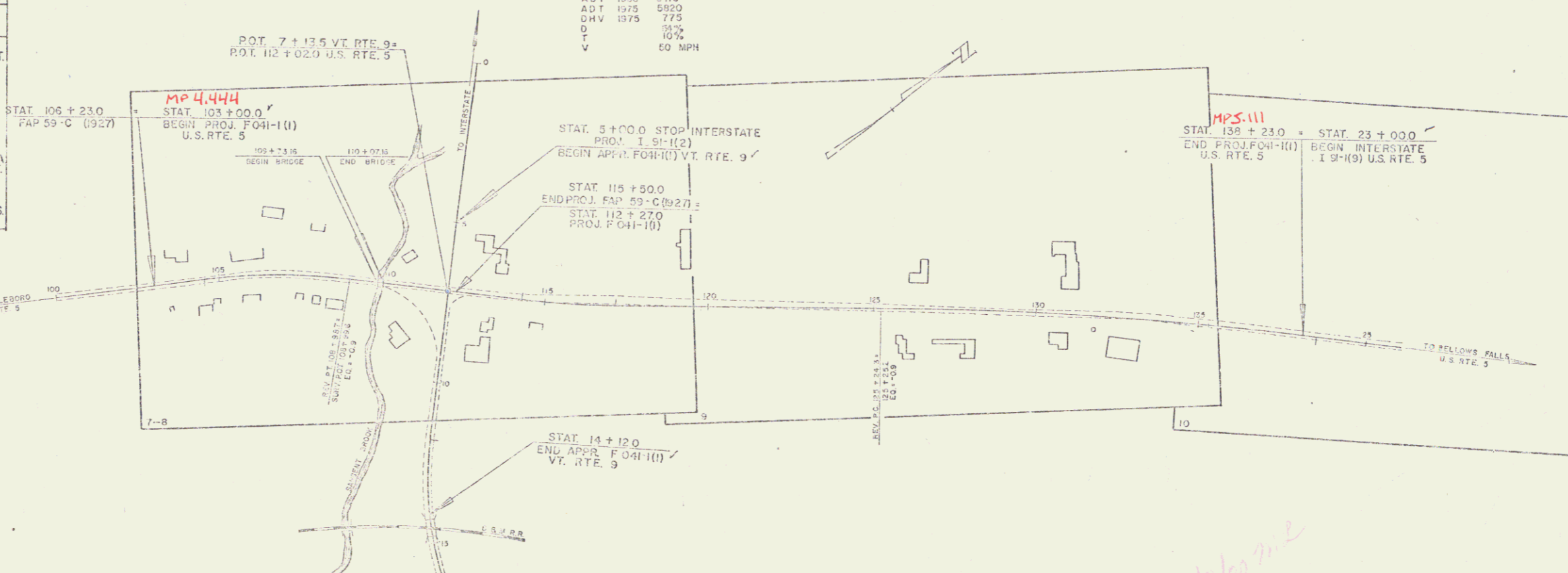
ADT 1955	5415
ADT 1975	5920
DHV 1975	775
D	70%
T	10%
V	60 MPH

PROJECT NAME & NUMBER TYPE PAVEMENT AREA
BRATTLEBORO (KANE TURN) (44-11) BIT. CONC. PAVEMENT 18,760 sq. YD.

RECORD PLANS

MATERIALS
GRAVEL STONE BASE - MASS. BROKEN STONE CO. - GREENFIELD, MASS.
CLOGGABLE GRAVEL - ILLARD PIT - BRATTLEBORO, VERMONT
TOP SOIL - BRATTLEBORO SAND & GRAVEL - BRATTLEBORO, VT.
FINED TAR - LAKE ASPHALT & PETROLEUM CO. - NORTHFIELD, MASS.
HOT-BITUM ASPHALT - MOBIL OIL CO. - PROVIDENCE, RHODE ISLAND
REINFORCING STEEL - VERMONT STRUCTURAL STEEL CO. - BURLINGTON, VT.
STRUCTURAL STEEL - HULEO WASH STEEL CO. - PITTSFIELD, MASS.
PORTLAND CEMENT - NORTHAMPTON, PA.
PRECAST CONCRETE PIPE - VERMONT CONCRETE PIPE CO. - WINDSOR, VT.
ASPH. CIL. CORR. GALV. METAL PIPE - NORTHEAST CULVERT CO. - WESTMINSTER, VT.
WOODEN MARKER POSTS -
STANDARD STEEL BEAM GUARD RAIL - LANL FENCE CO. - MERIDEN, CONN.
SLOPE EDGING -
CONCRETE CURB - FLETCHER CO. - CHELMSFORD, MASSACHUSETTS
BRIDGE RAILING (ALUMINUM) - FULTON RAILING, INC. - LAWRENCE, MASS.
CONTRACTOR - MALDEN SAND & CONCRETE PRODUCTS CO. - GREENFIELD, MASS.

DESIGNER - D.G. DANZ.
INVENTOR - H. MACLARY
RECORD PLANS - H. PRESTON & F.G. WIMBLE.
CONTRACT DATED - JULY 31, 1958.
CONTRACT STARTED - AUGUST 4, 1958.
CONTRACT COMPLETED - OCTOBER 19, 1959.
CONTRACT ACCEPTED - OCTOBER 19, 1959.



BRATTLEBORO (KANE TURN) (44-11) BIT. CONC. PAVEMENT 18,760 sq. YD.

CONTRACTOR - MALDEN SAND & CONCRETE PRODUCTS CO.
DESIGNER - D.G. DANZ.
INVENTOR - H. MACLARY
RECORD PLANS - H. PRESTON & F.G. WIMBLE.

ITEM	DATE	BY
DESIGNED	1958	D.G. DANZ
INVENTED	1958	H. MACLARY
RECORD PLANS	1958	H. PRESTON & F.G. WIMBLE
CONTRACT DATED	1958	H. PRESTON & F.G. WIMBLE
CONTRACT STARTED	1958	H. PRESTON & F.G. WIMBLE
CONTRACT COMPLETED	1959	H. PRESTON & F.G. WIMBLE
CONTRACT ACCEPTED	1959	H. PRESTON & F.G. WIMBLE

SCALES

TITLE 1" = 300'
PLAN 1" = 50' & 40'
PROFILE HORIZONTAL 1" = 50'
PROFILE VERTICAL 1" = 10'
CIRCULAR SECTIONS 1" = 50' (SUBJECT TO)

ITEM	DATE	BY
DESIGNED	1958	D.G. DANZ
INVENTED	1958	H. MACLARY
RECORD PLANS	1958	H. PRESTON & F.G. WIMBLE
CONTRACT DATED	1958	H. PRESTON & F.G. WIMBLE
CONTRACT STARTED	1958	H. PRESTON & F.G. WIMBLE
CONTRACT COMPLETED	1959	H. PRESTON & F.G. WIMBLE
CONTRACT ACCEPTED	1959	H. PRESTON & F.G. WIMBLE

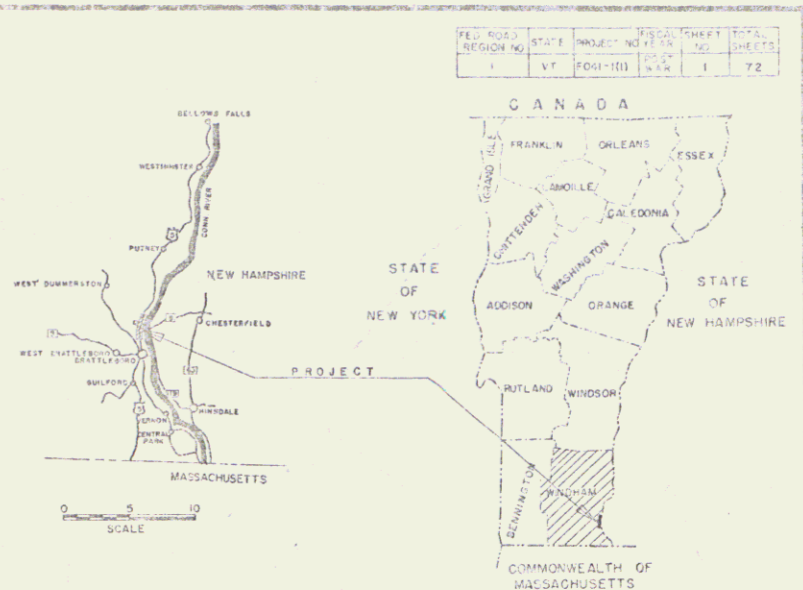
THESE PLANS ARE SUBJECT TO CORRECTIONS AS MAY BE REQUIRED BY THE BUREAU OF PUBLIC ROADS OR THE COMMISSIONER OF HIGHWAYS.

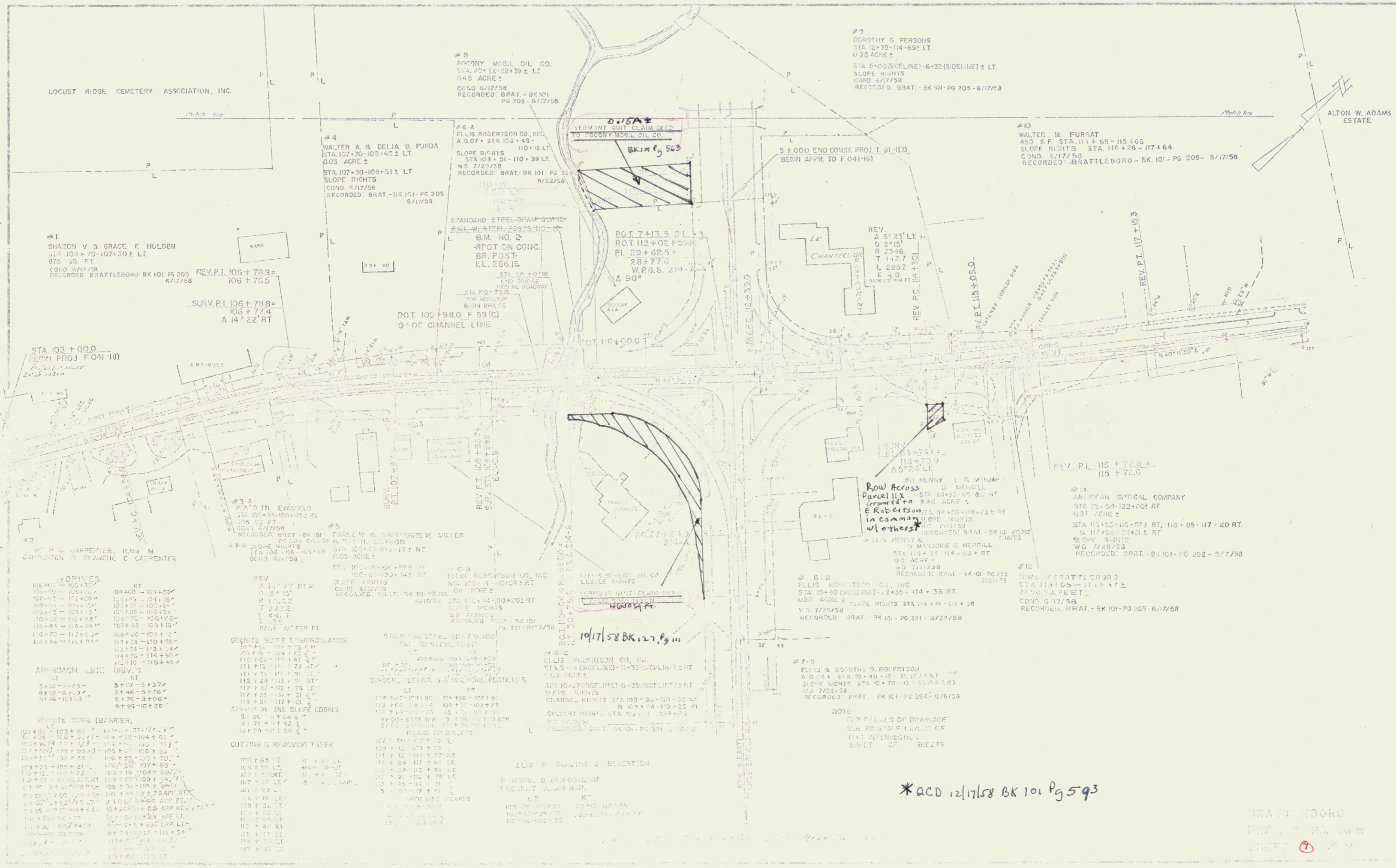
CONSTRUCTION IS TO BE CARRIED ON IN ACCORDANCE WITH THE PLANS AND THE STANDARD SPECIFICATIONS FOR HIGHWAY AND BRIDGE CONSTRUCTION AS AMENDED FROM TIME TO TIME BY THE BUREAU OF PUBLIC ROADS AND AS APPROVED BY THE COMMISSIONER OF HIGHWAYS AND SPECIAL PROVISIONS AS SET FORTH WITH THESE PLANS.

DEPARTMENT OF COMMERCE
BUREAU OF PUBLIC ROADS

APPROVED	DATE	APPROVED	DATE	APPROVED	DATE	APPROVED	DATE
<i>[Signature]</i>	1958	<i>[Signature]</i>	1958	<i>[Signature]</i>	1958	<i>[Signature]</i>	1958

STEARNS R. JENKINS
USS





LOCUST RIDGE CEMETERY ASSOCIATION, INC.

#8
ROONEY MOBIL OIL CO.
STA. 107+12-12+39 ± LT
0.45 ACRE ±
COND. 6/17/58
RECORDED: BRAT. - BK 101
PG 205 - 6/17/58

#9
DOROTHY G. PERSONS
STA. 12+59-114+69 ± LT
0.20 ACRE ±
STA. 5+00(SIDELINE)-6+32(SIDELINE) ± LT
SLOPE RIGHTS
COND. 6/17/58
RECORDED: BRAT. - BK 101-PG 205 - 6/17/58

ALTON W. ADAMS
ESTATE

#4
WALTER A. & DELIA B. PURDA
STA. 107+30-108+51 ± LT
0.03 ACRE ±
STA. 107+30-108+51 ± LT
SLOPE RIGHTS
COND. 6/17/58
RECORDED: BRAT. - BK 101-PG 205
6/17/58

#6 A
ELLIS ROBERTSON CO., INC.
A 0.07 ± STA. 103+45-
SLOPE RIGHTS
STA. 103+51-110+39 LT
W.D. 7/29/58
RECORDED: BRAT. - BK 101-PG 205
8/22/58

#10
WALTER M. FURSAT
450 S.F. STA. 114+55-115+65
SLOPE RIGHTS STA. 116+28-117+64
COND. 6/17/58
RECORDED: BRATTLEBORO - BK 101 - PG 205 - 6/17/58

#1
SHARON V. & GRACE F. HOLDEN
± STA. 104+78-107+30 ± LT
875 SQ. FT.
COND. 6/17/58
RECORDED: BRATTLEBORO - BK 101 - PG 205
6/17/58

REV. P.I. 106+78.3 =
106+79.5
SURV. P.I. 106+78.8 =
106+77.4
Δ 14° 22' RT

STANDARD STEEL BEAM GUARD-
RAIL W/ STEEL POSTS 10'-10"
B.M. NO. 2
-SPOT ON CONC.
BR. P.O.S.T.
R.L. 286.15
STA. 103+73.8
NO BRIDGE
POSTING
ROADWAY

POINT 7+13.5 S.L.
POINT 112+02 F 59.8
P.L. 29+82.5
28+77.0
W.P.G.S. 214-215
Δ 90°

REV. P.C. 115+00.0
REV. P.C. 115+00.0
REV. P.C. 115+00.0

STA. 103+00.0
CONC. PROJ. F 041-10

DRIVES

105+00 - 105+15	RT	104+00 - 104+30
107+02 - 107+08	RT	104+00 - 104+30
108+00 - 108+04	RT	104+00 - 104+30
109+05 - 109+11	RT	104+00 - 104+30
110+12 - 110+18	RT	104+00 - 104+30
111+04 - 111+10	RT	104+00 - 104+30
112+00 - 112+06	RT	104+00 - 104+30
113+04 - 113+10	RT	104+00 - 104+30
114+00 - 114+06	RT	104+00 - 104+30
115+04 - 115+10	RT	104+00 - 104+30
116+00 - 116+06	RT	104+00 - 104+30
117+04 - 117+10	RT	104+00 - 104+30
118+00 - 118+06	RT	104+00 - 104+30
119+04 - 119+10	RT	104+00 - 104+30
120+00 - 120+06	RT	104+00 - 104+30

APPROACH LINE DRIVES

5+00 - 5+05	RT	5+00 - 5+05
8+40 - 8+45	RT	8+40 - 8+45
9+00 - 9+05	RT	9+00 - 9+05

GRAVITE CURB (BARRIER)

109+00 - 109+05	RT	104+00 - 104+30
109+05 - 109+10	RT	104+00 - 104+30
109+10 - 109+15	RT	104+00 - 104+30
109+15 - 109+20	RT	104+00 - 104+30
109+20 - 109+25	RT	104+00 - 104+30
109+25 - 109+30	RT	104+00 - 104+30
109+30 - 109+35	RT	104+00 - 104+30
109+35 - 109+40	RT	104+00 - 104+30
109+40 - 109+45	RT	104+00 - 104+30
109+45 - 109+50	RT	104+00 - 104+30
109+50 - 109+55	RT	104+00 - 104+30
109+55 - 109+60	RT	104+00 - 104+30
109+60 - 109+65	RT	104+00 - 104+30
109+65 - 109+70	RT	104+00 - 104+30
109+70 - 109+75	RT	104+00 - 104+30
109+75 - 109+80	RT	104+00 - 104+30
109+80 - 109+85	RT	104+00 - 104+30
109+85 - 109+90	RT	104+00 - 104+30
109+90 - 109+95	RT	104+00 - 104+30
109+95 - 110+00	RT	104+00 - 104+30

GRAVITE SLOPE SPARKING AMOS

107+00 - 107+05	RT	104+00 - 104+30
107+05 - 107+10	RT	104+00 - 104+30
107+10 - 107+15	RT	104+00 - 104+30
107+15 - 107+20	RT	104+00 - 104+30
107+20 - 107+25	RT	104+00 - 104+30
107+25 - 107+30	RT	104+00 - 104+30
107+30 - 107+35	RT	104+00 - 104+30
107+35 - 107+40	RT	104+00 - 104+30
107+40 - 107+45	RT	104+00 - 104+30
107+45 - 107+50	RT	104+00 - 104+30
107+50 - 107+55	RT	104+00 - 104+30
107+55 - 107+60	RT	104+00 - 104+30
107+60 - 107+65	RT	104+00 - 104+30
107+65 - 107+70	RT	104+00 - 104+30
107+70 - 107+75	RT	104+00 - 104+30
107+75 - 107+80	RT	104+00 - 104+30
107+80 - 107+85	RT	104+00 - 104+30
107+85 - 107+90	RT	104+00 - 104+30
107+90 - 107+95	RT	104+00 - 104+30
107+95 - 108+00	RT	104+00 - 104+30

CUTTINGS & REMOVING TREES

107+00 - 107+05	RT	104+00 - 104+30
107+05 - 107+10	RT	104+00 - 104+30
107+10 - 107+15	RT	104+00 - 104+30
107+15 - 107+20	RT	104+00 - 104+30
107+20 - 107+25	RT	104+00 - 104+30
107+25 - 107+30	RT	104+00 - 104+30
107+30 - 107+35	RT	104+00 - 104+30
107+35 - 107+40	RT	104+00 - 104+30
107+40 - 107+45	RT	104+00 - 104+30
107+45 - 107+50	RT	104+00 - 104+30
107+50 - 107+55	RT	104+00 - 104+30
107+55 - 107+60	RT	104+00 - 104+30
107+60 - 107+65	RT	104+00 - 104+30
107+65 - 107+70	RT	104+00 - 104+30
107+70 - 107+75	RT	104+00 - 104+30
107+75 - 107+80	RT	104+00 - 104+30
107+80 - 107+85	RT	104+00 - 104+30
107+85 - 107+90	RT	104+00 - 104+30
107+90 - 107+95	RT	104+00 - 104+30
107+95 - 108+00	RT	104+00 - 104+30

STANDARD STEEL BEAM GUARD-
RAIL W/ STEEL POSTS
10'-10"
B.M. NO. 2
-SPOT ON CONC.
BR. P.O.S.T.
R.L. 286.15
STA. 103+73.8
NO BRIDGE
POSTING
ROADWAY

ELLIS B. ROBERTSON CO., INC.
STA. 103+45-104+05 ± RT
0.04 ACRE ±
COND. 6/17/58
RECORDED: BRAT. - BK 101-PG 205
8/22/58

#6-C
ELLIS ROBERTSON CO., INC.
STA. 10+40(SIDELINE)-12+25-114+36 RT
0.80 ACRE ±
SLOPE RIGHTS STA. 114+18-114+36
W.D. 7/29/58
RECORDED: BRAT. - BK 101 - PG 205 - 6/17/58

#7-B
ELLIS & DOROTHY D. ROBERTSON
A 0.04 ± STA. 10+40-12+25(SIDELINE) ± RT
SLOPE RIGHTS STA. 10+40-12+25(SIDELINE) ± RT
W.D. 7/29/58
RECORDED: BRAT. - BK 101 - PG 205 - 6/17/58

#7-D
ELLIS ROBERTSON CO., INC.
STA. 10+40(SIDELINE)-12+25-114+36 RT
0.80 ACRE ±
SLOPE RIGHTS STA. 114+18-114+36
W.D. 7/29/58
RECORDED: BRAT. - BK 101 - PG 205 - 6/17/58

#7-E
ELLIS & DOROTHY D. ROBERTSON
A 0.04 ± STA. 10+40-12+25(SIDELINE) ± RT
SLOPE RIGHTS STA. 10+40-12+25(SIDELINE) ± RT
W.D. 7/29/58
RECORDED: BRAT. - BK 101 - PG 205 - 6/17/58

*ACD 12/17/58 BK 101 Pg 593

BRATTLEBORO
PLANNING & ENGINEERING
SHEET 7 OF 7

DRIVES

LT	PT	RT
126 + 12.1	126 + 60	126 + 60
130 + 00	128 + 00	128 + 00
132 + 23	130 + 15	130 + 15
132 + 23	132 + 60	132 + 60

CUTTING & REMOVING TREES

121 + 65 LA	126 + 14 RT
121 + 98 RT	126 + 15 RT
122 + 69 LT	126 + 93 LT
123 + 42 LT	130 + 50 LT
123 + 26 LT	131 + 00 LT
124 + 46 LT	131 + 31 LT
124 + 61 LT	132 + 68 LT
124 + 72 LT	132 + 68 LT
125 + 21 RT	133 + 90 RT
125 + 91 RT	134 + 64 LT

SIDERoadS
124 + 65 RT
129 + 10 RT

GRANITE CURB (BARRIER)
119 + 00 - 119 + 10 LT

STANDARD STEEL BEAM GUARD
RAIL W/ STEEL POSTS
133 + 25 - 134 + 25 RT

#15
GLADYS P THOMAS ROWE
STA 128 + 83 - 127 + 29 LT
124 + 21 - 126 + 75 RT
129 + 85 - 129 + 50 RT
132 + 58 - 133 + 05 LT
134 + 12 - 136 + 26 LT
135 + 20 - 138 + 23 LT

SLOPE RIGHTS
WDOE 7/18/58
RECORDED: BRAT - BK 101 - PG 271
7/30/58

#16
ALFREDO'S INN, INC.
HILL HOME INN, INC.
STA 128 + 81 - 132 + 98 LT
SLOPE RIGHTS
COND 6/17/58
RECORDED: BRAT - BK 101 - PG 275
6/17/58

SURV. P.I. 16 + 48.3 =
16 + 48.0

2ND
REV. P.I. 131 + 96.0 =
131 + 94.4

REV. P.I. 17 + 73.5 =
17 + 72.5

#14 ALTON W. ADAMS ESTATE
STA 123 + 71 - 126 + 83 LT
SLOPE RIGHTS
COND 6/17/58
RECORDED: BRAT - BK 101 - PG 205 - 6/17/58

SLOPE RIGHTS
WDOE 7/18/58
RECORDED: BRAT - BK 101 - PG 271
7/30/58

State of Vt.
J.E.A. 01807
C.D. 00000
EASTLE ROAD 54.1211111
1,050 sq. ft.

ELECTRICAL APPLIANCE
STORE

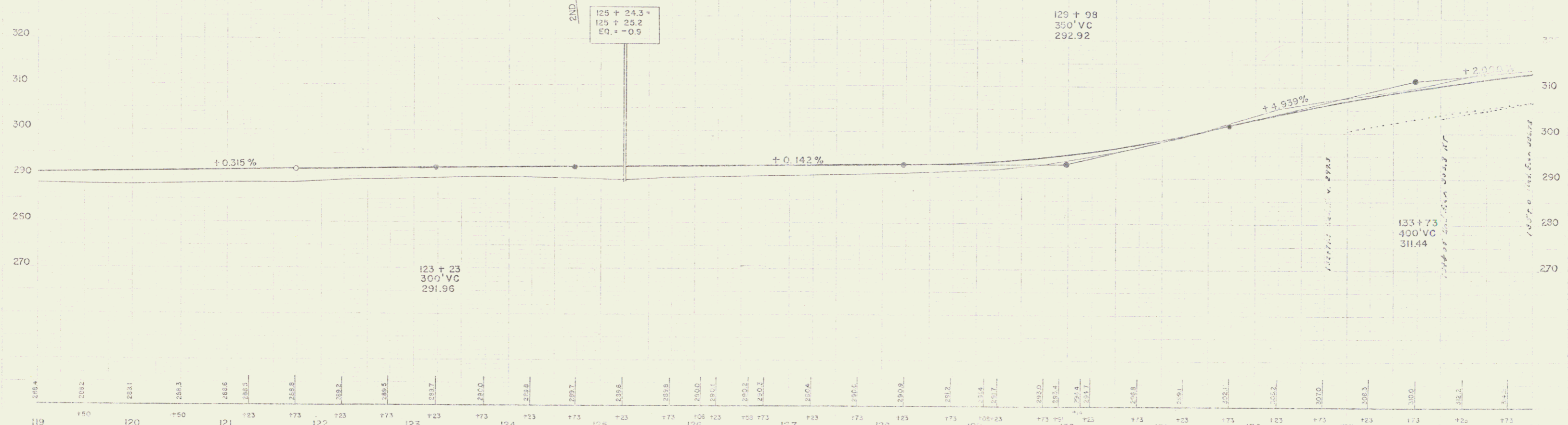
2ND REV.
Δ 6° 42' RT.
D 0° 30'
R 1459.2
T 670.8
L 1340.0
E 19.6
OO 100' BANK

REV
Δ 5° 41' RT.
D 0° 30'
R 1459.2
T 568.8
L 1136.6
E 14.1

#17
LOYAL C. & LYLE B. HODGE
STA 130 + 94 - 130 + 68 RT
133 + 43 - 134 + 07 RT
SLOPE RIGHTS
WDOE 7/11/58
RECORDED: BRAT - BK 101 - PG 219 - 7/16/58

2ND REV. P.C. 125 + 24.3 =
125 + 25.2
E.O. = -0.9

Δ 4° 20' RT.
D 18'
R 8729.7
L 443.3
E 4.26

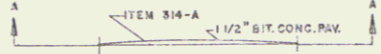
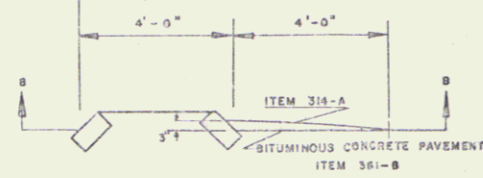


BM 1 119 + 00 - 120 + 00 - 121 + 00 - 122 + 00 - 123 + 00 - 124 + 00 - 125 + 00 - 126 + 00 - 127 + 00 - 128 + 00 - 129 + 00 - 130 + 00 - 131 + 00 - 132 + 00 - 133 + 00 - 134 + 00 - 135 + 00

BM 5 519 24' 41" - 8' 41" - Sta 126 + 86 - Elev 290.55

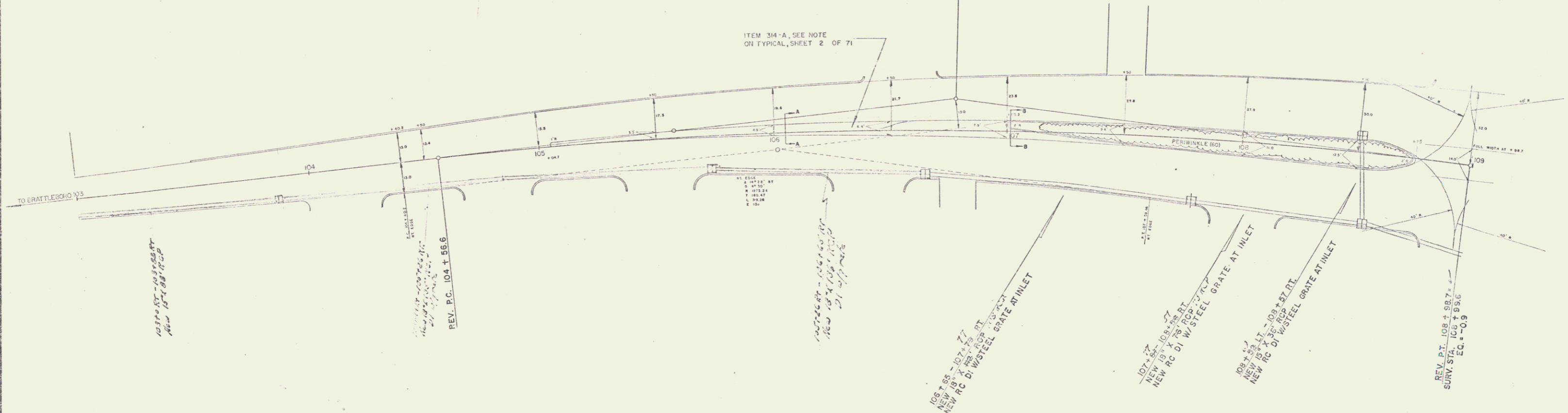
BM 6 619 24' 41" - 41' 41" - Sta 132 + 30 - Elev 306.20

134
ENY TLEDER
TRAIL 100' x 110'
SHEE 5' x 12'



SURV. P.I. 106 + 78.8 =
 108 + 77.4
 Δ 14° 22' RT.
 D 6°
 REV. P.I. 106 + 78.8 =
 106 + 76.5

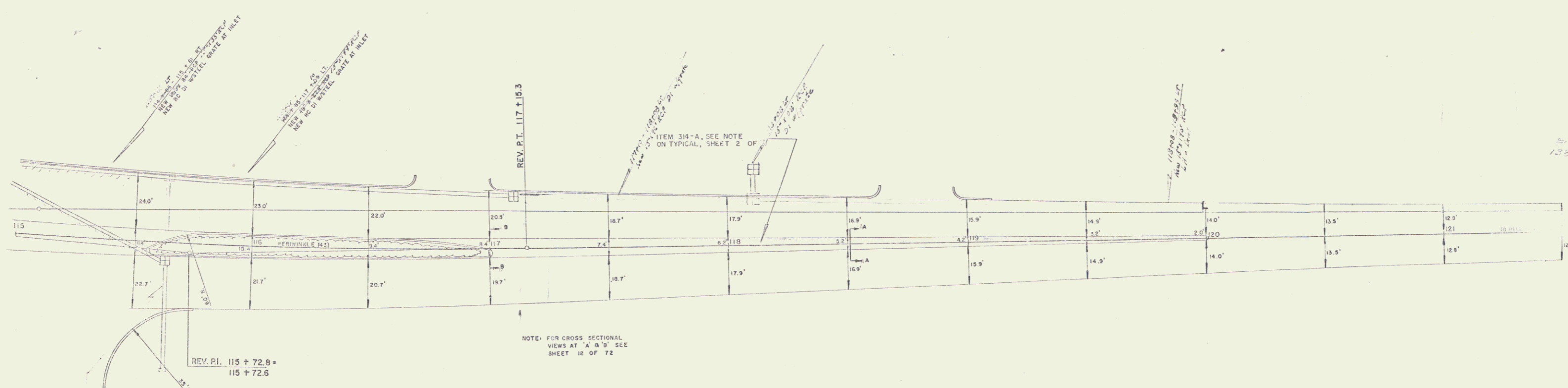
ITEM 314-A, SEE NOTE ON TYPICAL, SHEET 2 OF 71



REV
 Δ 14° 22' RT
 D 3° 15'
 R 1763.2
 T 222.2
 L 442.1
 E 13.9

BRATTLEBORO
 PROJ. F NO 011-101
 SHEET 12 OF 72

REV.
 Δ 6° 25' LT.
 D 25' 15"
 R 2546.64
 T 142.7
 L 285.2
 E 4.0



Scale
 1/2" = 1'

BRATTLEBORO
 PROJ. NO. 041-103
 SHEET 14 OF 72

