



Parcel #4  
 Fairfield Associates Limited  
 Take 0.30 A±  
 Sta. 68+00 Lt. - Sta. 73+33 Lt.  
 Culvert (P) Sta. 72+15  
 W.D. Braithelboro 9-4-73  
 BK. 137 Pg. 333

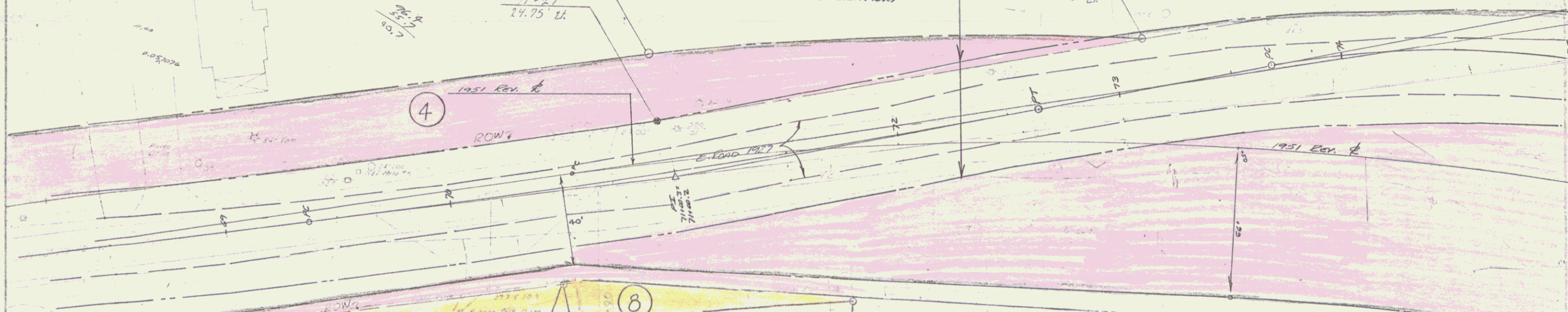
Mag. North

71+27  
 54.75' Lt.

71+27  
 24.75' Lt.

Shipping Center Area  
 SE Highway EASE. Based on  
 1927 Roadway Location

73+33  
 54.75' Lt.



Parcel #7  
 A.R. SANDRI & ROLAND W. GOVIN  
 TAKING 0.10 A±

Parcel #8  
 NORMAN & DOROTHY BONNEAU  
 TAKING 0.03 A±

Purchased  
 12/71  
 Station  
 \$11,000

BM #1  
 Ch. 17  
 Elev. 880.76

6  
 46  
 59' Rt.

70+78  
 40' Rt.

70+80  
 59' Rt.

72+07  
 59' Rt.

A 25' 40" Rt.  
 B 3'  
 C 143' 4"  
 D 327' 6"  
 E 682' 5"

DATE	BY