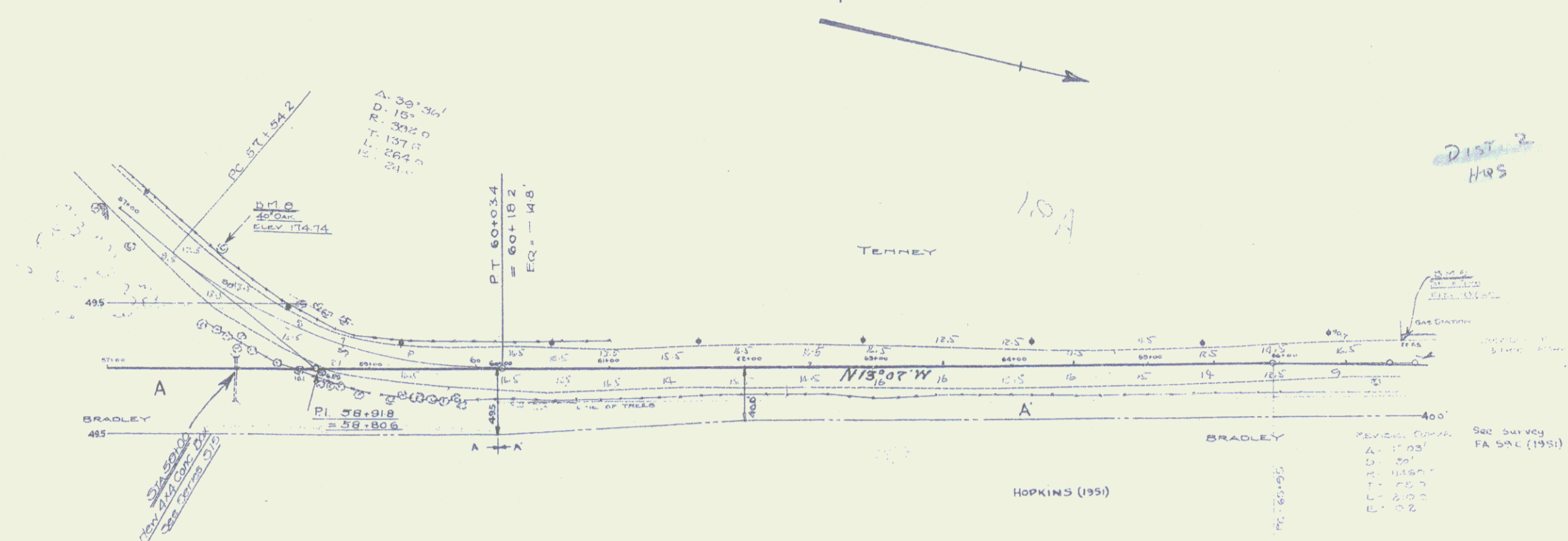


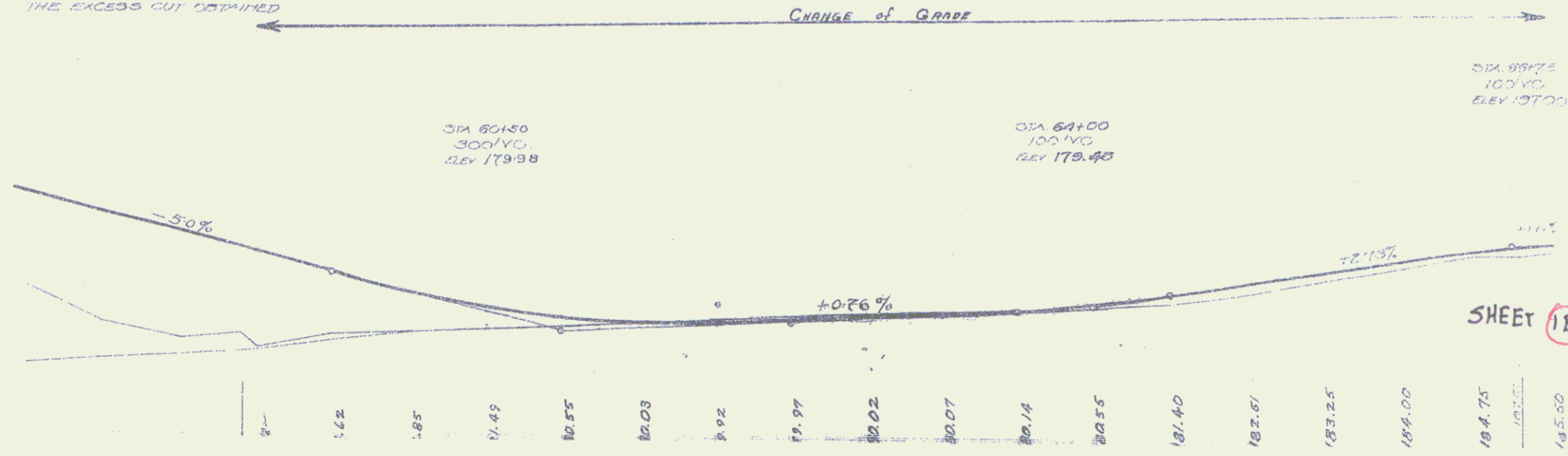
CABLE GUARD RAIL REQUIRED
 STA 485 TO STA 600 LENGTH 115 FT
 STA 600 TO STA 620 LENGTH 20 FT
 STA 620 TO STA 640 LENGTH 20 FT
 TOTAL PROJECT 155 FT

NEW CULVERTS REQUIRED
 STA 500-00 - 4x4 CONCRETE BOX CULVERT
 CONCRETE CLASS A (12-4) - 200' LGS
 REIN STEEL 2649



Parcel	Instrument	Grantee	Grantor	Recorded	Remarks
A	QCD	5-1-29	Richard M. Bradley	Town of Brattleboro	6T 156 5-28-29 See sheet 6
A	W.D.C.	11-23-31	DAVID & HELEN B. HOPKINS	STATE OF VERMONT	31 304 12-3-31 See Sheets

NOTE
 IF SO DESIRED BY THE ENGINEER
 THIS 5% GRADE MAY BE REVISED
 TO MORE SATISFACTORILY USE
 THE EXCESS CUT OBTAINED



SHEET 1E