

2345

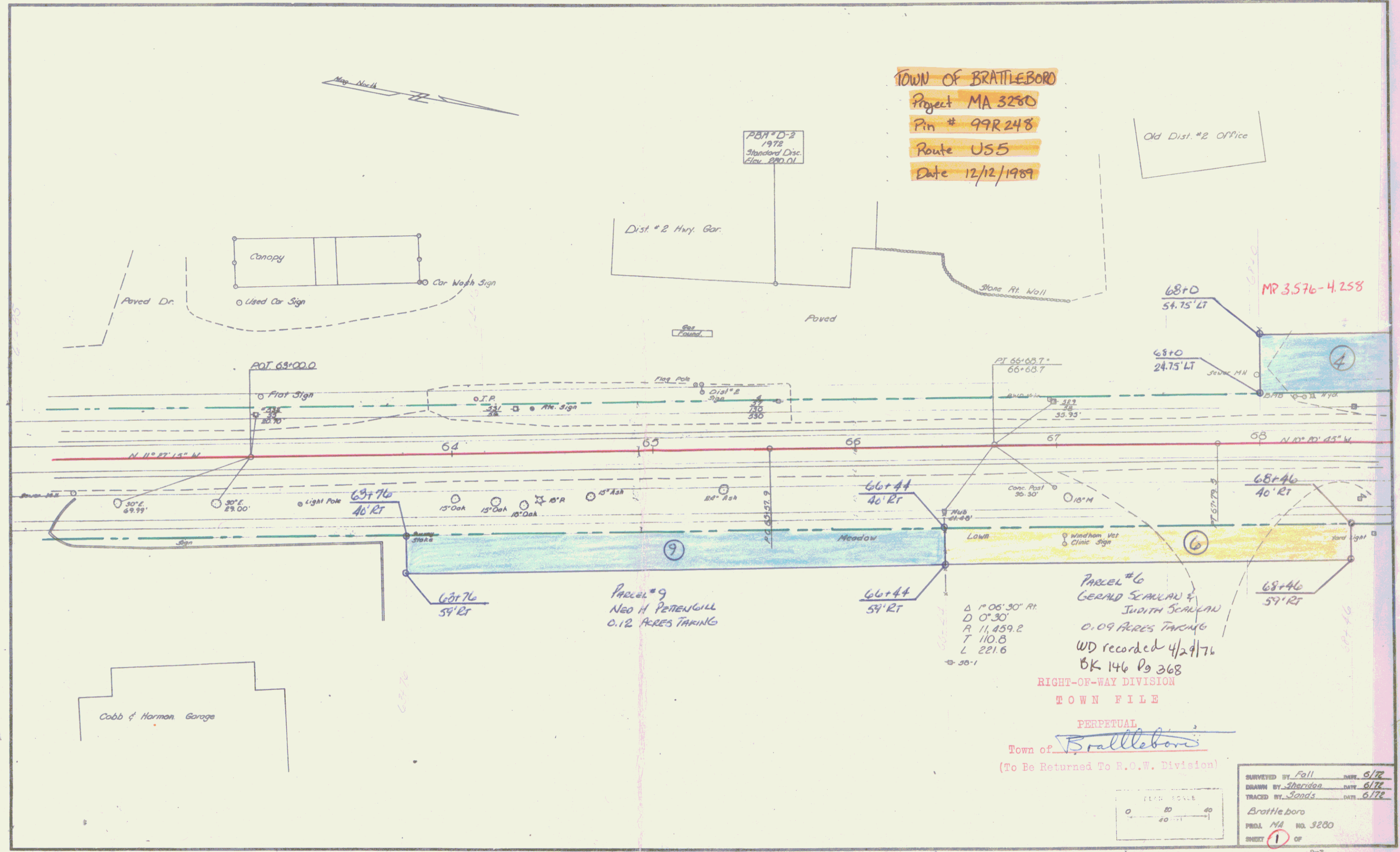
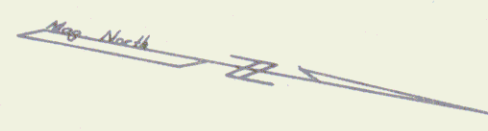
MONTPELIER PLAN #1

TOWN OF BRATTLEBORO  
Project MA 3280  
Pin # 99R248  
Route US5  
Date 12/12/1989

Old Dist. #2 Office

Dist. #2 Hwy. Gar.

PBA # D-2  
1972  
Standard Disc.  
Elev. 220.01



RIGHT-OF-WAY DIVISION  
TOWN FILE

PERPETUAL  
Town of Brattleboro  
(To Be Returned To R.O.W. Division)

SURVEYED BY	Fall	DATE	5/72
DRAWN BY	Sheridan	DATE	6/72
TRACED BY	Sands	DATE	6/72
Brattleboro			
PROJ. NO.	MA	NO.	3280
SHEET	1	OF	1

